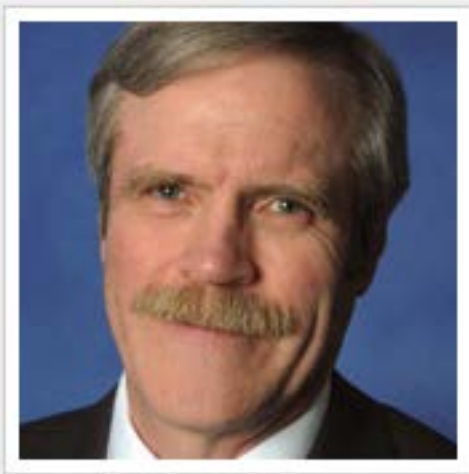


The Alabama Climate Report

Brought to you by the Office of the Alabama Climatologist

Volume 5, Number 3, December 2014



Dr. John Christy, Alabama State Climatologist

It looks like 2015 is going to start in much the same way 2014 did: Cold.

This week might not be quite as icy as the three Arctic blasts that rocked Alabama a year ago, but it might be close. Low temperatures a year ago included -1° in both Valley Head and Russellville during different cold spells. Statewide, the average temperature in January 2014 was an icy 7 degrees colder than normal.

The thing everyone will remember from January 2014 is the “snowpocalypse” that dumped snow and ice over much of southern and central Alabama, stretching up the I-20 corridor to Atlanta and beyond. Tens of thousands (if not hundreds of thousands) of people were stranded when cars and trucks could no longer negotiate the ice-covered streets and highways.

January wasn't our only nasty cold month in 2014. November saw a strong cold front yo-yo temperatures as much as 62 degrees in less than two weeks. Temperatures that were in the mid 70s on Nov. 11 dropped as low as 11° in Addison on Nov. 19, then bounced back up into the mid to upper 70s by Nov. 24!

It makes your joints ache just to think about it. Or it does mine.

Statewide, 2014 was a relatively quiet year in terms of severe weather. There were 54 reported tornadoes, with 73 people injured and “only” two fatalities, both in an April 28 EF-3 tornado that hit Billy Barb's Trailer Park in Limestone County.

Even so, our colleagues at the National Weather Service and researchers at UAH are working diligently to produce earlier and better warnings so one day we may report no fatalities.

As frequently happens in Alabama, we saw periods of both extreme rainfall and drought in 2014. Some stations in Mobile and Baldwin counties reported more than 25 inches of rain just in April and May. That included Mobile getting more than 11 inches of rain just on April 29, its third wettest day on record.

Then September saw rainfall statewide that was less than half of what is normal for that month. Huntsville got less than half an inch of rain in September, while Gainsville Lock and Dam reported only 0.52”.

Looking at our statewide sample of cities, 2014 was slightly cooler than normal, with an average temperature of 61.74° compared to the norm of 63.04° . And statewide, we came up just over two inches short on rainfall, with an average of 54.64 inches statewide compared to the norm of 56.72”.

Looking back somewhat farther into Alabama's weather history, 2015 will be the 40th anniversary of the wettest

year in the state's 120+ year climate record. The average statewide rainfall in 1975 was 76.23 inches, or about 20 inches more than normal.

No doubt that was somewhat the result of Hurricane Eloise coming ashore in September of that year. While hurricanes can bring with them quite a bit of rain, Eloise was also unique in that it held together as a hurricane until after it passed over Auburn!

August 29 will mark the 10th anniversary of Hurricane Katrina, one of the last major (Cat. 3 or larger) hurricanes to hit the U.S. coast (Wilma, later that year was the last). This is already a record for the longest period between major hurricanes in the U.S.

And Sept. 4, 2015, will mark the 90th anniversary of the hottest day in Alabama's climate record, with a high temperature of 112 degrees Fahrenheit recorded in Centreville. That September was apparently fairly miserable, with a statewide average temperature of 83.1°.

- John Christy

U.S. Drought Monitor Alabama



December 30, 2014
(Released Wednesday, Dec. 31, 2014)
Valid 7 a.m. EST

Drought Conditions (Percent Area)

	None	D0-D4	D1-D4	D2-D4	D3-D4	D4
Current	62.49	37.51	3.77	0.00	0.00	0.00
Last Week 12/23/2014	28.08	71.92	34.86	3.89	0.00	0.00
3 Months Ago 9/30/2014	17.21	82.79	26.99	1.25	0.00	0.00
Start of Calendar Year 12/31/2013	97.35	2.65	0.00	0.00	0.00	0.00
Start of Water Year 9/30/2014	17.21	82.79	26.99	1.25	0.00	0.00
One Year Ago 12/31/2013	97.35	2.65	0.00	0.00	0.00	0.00

Intensity:

- D0 Abnormally Dry
- D1 Moderate Drought
- D2 Severe Drought
- D3 Extreme Drought
- D4 Exceptional Drought

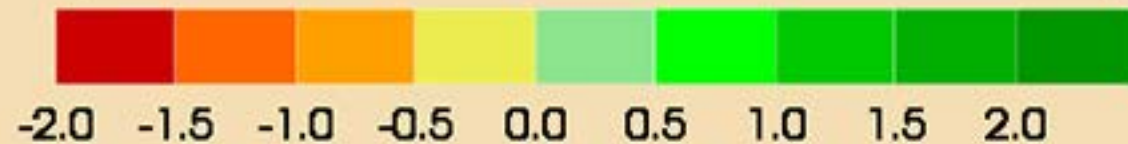
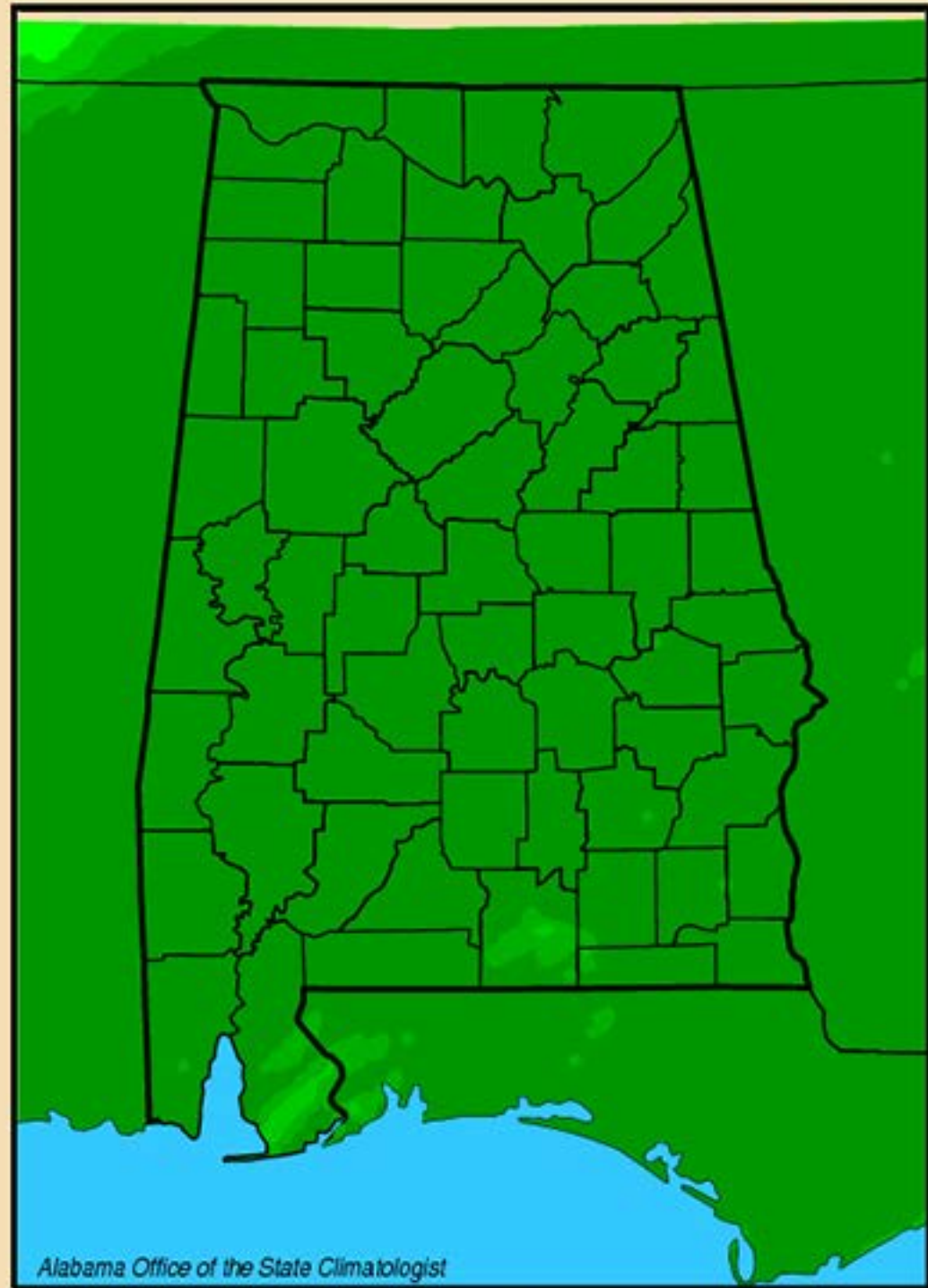
The Drought Monitor focuses on broad-scale conditions. Local conditions may vary. See accompanying text summary for forecast statements.

Author:
Brad Rippey
U.S. Department of Agriculture



<http://droughtmonitor.unl.edu/>

Lawn-and-Garden Moisture Index for January 7, 2015



Alabama Monthly Climate Summaries Dec. 2014

Station	Station Began	Dec. Mean Dec. Norm	Dec. Hi Temp Record Hi	Dec. Low Temp Record Low	Total Precip. Normal Prec.	Wettest Dec. Driest Dec.	Heaviest Day Record Day
Anniston	2/1903	48.3° 46.1°	76° 12/4/14 80° 12/7/51	23° 12/12/14 1° 12/13/62	6.22" 4.11"	10.32" 1983 .71" 1980	1.99" 12/28/14 4.11" 12/20/51
Auburn	1/1893	49.4° 48.3°	75° 12/4/14 84° 12/20/24	27° 12/11/14 -1° 12/13/62	5.28" 5.26"	14.27" 1953 .82" 1955	1.58" 12/23/14 6.22" 12/4/53
Birmingham	1/1930	48.7° 45.6°	76° 12/4/14 80° 12/7/51	27° 12/11/14 1°+ 12/23/89	7.15" 4.47"	12.63" 1983 .81" 1980	1.74" 12/23/14 7.70" 12/27/42
Brewton	4/1977	52.9° 48.5°	78.7° 12/4/14 84° 12/9/98	31.3° 12/9/14 7° 12/13/62	6.52" 4.78"	14.96" 1972 1.13" 1980	3.01" 12/23/13 6.23" 12/21/72
Calera	9/1900	50.4° 45.9°	77° 12/4/14 79° 12/8/78	31° 12/11/14 -5° 12/26/83	8.08" 5.12"	13.61" 1983 .65" 1917	1.96" 12/27/14 7.25" 12/28/42
Clanton	2/1893	48.7° 45.2°	75.6° 12/4/14 80°+ 12/9/78	27.9° 12/13/14 2° 12/13/62	6.82" 4.96"	13.61" 1983 2.20" 1980	2.14" 12/23/14 5.10" 12/12/61
Courtland		44.9° M	70.0° 12/1/14 M	24.0° 12/12/14 M	7.12" M	M M	3.40" 12/23/14 M
Cullman	7/1907	45.3° M	71.7° 12/4/14 M	23.8° 12/12/14 M	5.91" M	M M	1.98" 12/23/14 M
Decatur	2/1880	45.5° 43.5°	73° 12/4/14 78° 12/7/51	23° 12/12/14 1° 12/15/1901	M# 5.08"	11.52" 1911 .88" 1965	M# 4.87" 12/29/54
Dothan	2/1902	54.3° 51.3°	78° 12/4/14 82° 12/6/51	32° 12/10/14 7° 12/13/62	5.44" 4.56"	13.72" 1964 .50" 1955	2.43" 12/23/14 9.84" 12/25/64
Fairhope	8/1917	54.9° 52.5°	78.3° 12/4/14 84° 12/30/65	31.0° 12/11/14 8° 12/13/62	4.83" 4.40"	8.04" 1982 1.67" 1980	0.90" 12/19/14 9.80" 12/6/53
Gadsden	7/1893	44.4° 43.5°	68.0° 12/1/14 78°+ 12/7/98	21.8° 12/12/14 1° 12/13/62	6.52" 4.89"	10.33" 1983 .43" 1980	2.95" 12/23/14 5.85" 12/12/61
Gainesville Lock	6/1948	48.9° 46.1°	77.6° 12/4/14 83° 12/4/78	28.6° 12/11/14 2° 12/24/89	8.09" 4.81"	11.36" 1982 .73" 1980	3.06" 12/27/14 4.77" 12/26/73
Greensboro	2/1890	49.6° 48.5°	77.2° 12/4/14 82° 12/6/51	26.4° 12/11/14 2° 12/23/89	7.55" 4.76"	13.36" 1973 .37" 1980	2.29" 12/27/14 6.12" 12/28/42
Highland Home	3/1892	53.0° 48.5°	77.1° 12/4/14 83° 12/8/51	29.1° 12/11/14 4°+ 12/26/83	M# 4.76"	9.05" 1972 1.59" 1998	M# 4.00"+ 12/17/92
Huntsville	1/1959	47.3° 43.1°	74° 12/4/14 79° 12/4/98	27° 12/12/14 -3° 12/22/89	5.73" 5.59"	18.68" 1990 .76" 1965	1.86" 12/23/14 9.07" 12/22/90

Alabama Monthly Climate Summaries

Dec. 2014

Station Began	Dec. Mean Dec. Norm	Dec. Hi Temp Record Hi	Dec. Low Temp Record Lo	Total Precip. Normal Prec.	Wettest Dec. Driest Dec.	Heaviest Day Record Day
Mobile 3/1900	54.5° 52.3°	77° 12/5/14 81+ 12/7/98	32° 12/25/14 8° 12/25/83	5.27" 4.66"	8.86" 1995 1.29" 1980	2.29" 12/27/14 4.68" 12/18/95
Montgomery 6/1948	52.4° 49.0°	81° 12/4/14 85° 12/2/82	28° 12/11/14 5+ 12/25/83	4.89" 4.97"	11.35" 1981 1.39" 1980	1.52" 12/23/14 3.92" 12/16/92
Muscle Shoals 12/1940	46.6° 43.3°	73° 12/1/14 78+ 12/24/84	28° 12/12/14 -5° 12/23/89	5.13" 5.44"	19.19" 1990 .65" 1980	1.78" 12/23/14 5.20" 12/1/91
Russellville 9/1953	44.8° 42.0°	72.6° 12/4/14 85° 12/25/84	22.6° 12/12/14 -7° 12/23/89	6.73" 5.36"	17.45" 1990 1.02" 1980	2.75" 12/23/14 5.31" 12/29/54
Scottsboro 10/1891	M# 42.1°	M# 80° 12/7/51	M# -1° 12/25/83	M# 5.65"	14.73" 1990 1.34" 1980	M# 6.80" 12/23/90
Selma 1/1895	50.7° 49.2°	77.9° 12/4/14 85+ 12/6/51	26.9° 12/13/14 5° 12/13/82	4.79" 4.72"	9.97" 1983 1.29" 1980	1.72" 12/23/14 7.08" 12/10/81
Talladega 2/1888	46.7° 43.6°	73.1° 12/4/14 80° 12/7/51	24.0° 12/14/14 0° 12/13/82	7.48" 4.24"	8.43" 1983 .98" 1979	2.06" 12/28/14 3.80" 12/31/73
Thomasville 9/1891	50.8° 59.6°	77.8° 12/4/14 85° 12/11/33	29.0° 12/11/14 3° 12/13/82	5.09" 5.16"	11.65" 1971 1.12" 1980	1.94" 12/23/14 6.29" 12/10/81
Troy 6/1908	51.7° 50.4°	77.2° 12/4/14 82° 12/3/1912	28.8° 12/11/14 4° 12/13/82	5.26" 4.54"	14.95" 1972 .29" 1980	1.42" 12/24/14 6.67" 12/6/72
Tuscaloosa 6/1948	49.8° 47.0°	77° 12/4/14 82° 12/3/78	28° 12/11/14 2° 12/23/89	7.00" 4.87"	11.05" 1983 .68" 1980	2.37" 12/23/14 3.64" 12/20/51
Valley Head 1/1893	43.7° 41.3°	68.1° 12/4/14 85° 12/28/42	19.7° 12/12/14 -8° 12/13/82	5.67" 4.86"	13.67" 1981 .77" 1904	1.83" 12/23/14 4.28" 12/12/81
Statewide Dec. 2014	49.5°	81° Montgomery	19.7° Valley Head	6.16"	19.19" M. Shoals	3.40" Moulton
Dec. Norm	47.3°	85+ Selma	-8° Valley Head	4.84"	0.29" Troy	9.84" Dothan

M: Data is missing or not available

*New Record

#This data is missing this month due to an instrument malfunction

^ This record differs from long-term data in the AOSC climate database:

http://nsstc.uah.edu/alclimate/climate/daily_climate_and_normals.php

Community Collaborative Rain, Hail & Snow Network (CoCoRAHS)

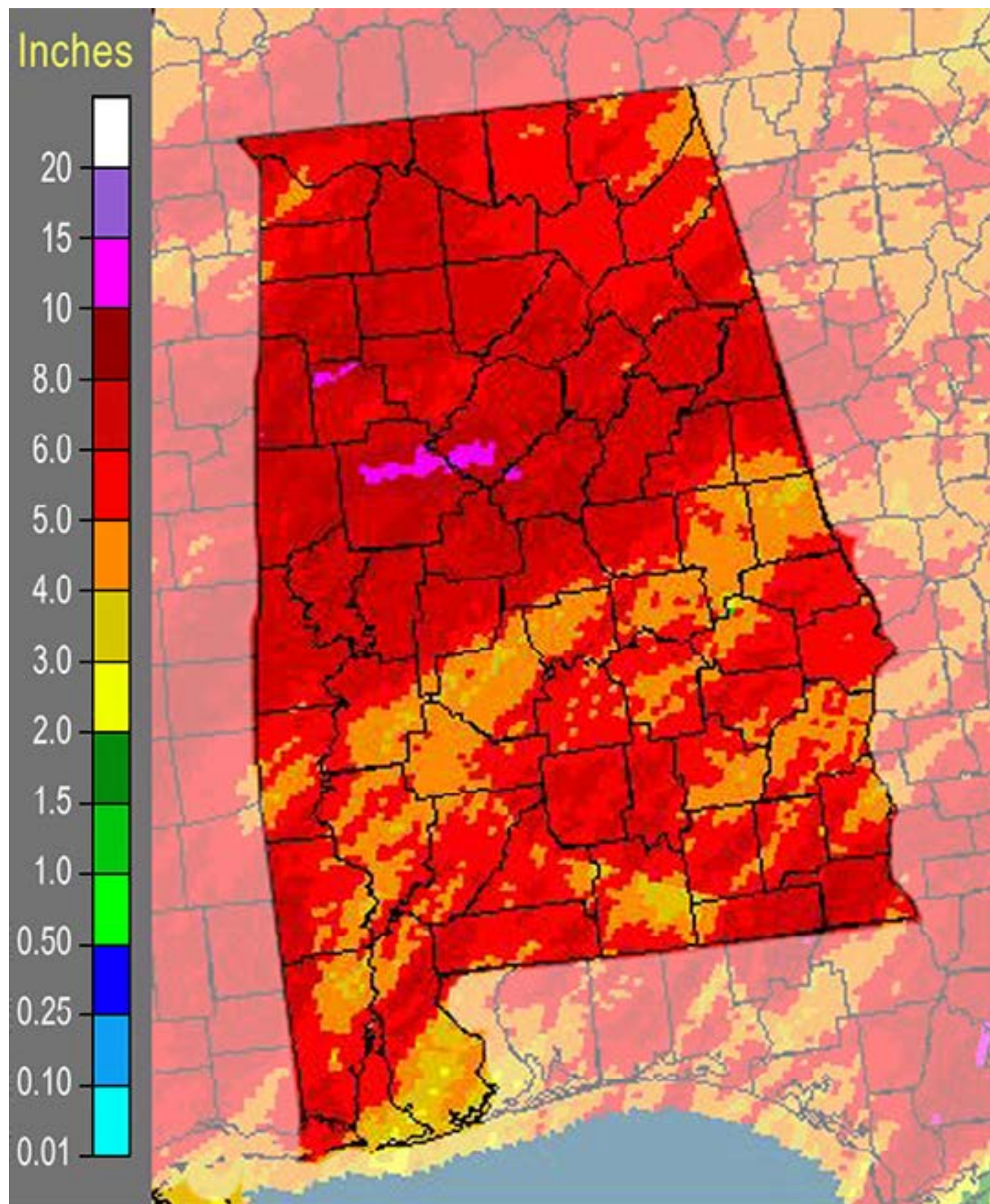
December 2014

	Ave. Total Precip.	# Stations		Ave. Total Precip.	# Stations
Autauga	3.65	3	Houston	6.40	1
Baldwin	4.57	22	Jackson	4.95	7
Barbour	n.a.	0	Jefferson	7.71	14
Bibb	4.41	1	Lamar	9.03	1
Blount	7.49	9	Lauderdale	4.94	11
Bullock	n.a.	0	Lawrence	7.65	2
Butler	n.a.	0	Lee	3.86	4
Calhoun	6.44	2	Limestone	5.20	11
Chambers	n.a.	0	Lowndes	n.a.	0
Cherokee	6.56	1	Macon	n.a.	0
Chilton	4.82	2	Madison	4.69	51
Choctaw	3.48	1	Marengo	n.a.	0
Clarke	6.28	3	Marion	8.67	1
Clay	n.a.	0	Marshall	5.87	11
Cleburne	n.a.	0	Mobile	4.91	13
Coffee	3.62	1	Monroe	4.52	2
Colbert	4.68	8	Montgomery	5.04	3
Conecuh	n.a.	0	Morgan	5.63	7
Coosa	7.18	2	Perry	n.a.	0
Covington	n.a.	0	Pickens	10.47	1
Crenshaw	n.a.	0	Pike	n.a.	0
Cullman	5.52	5	Randolph	5.60	1
Dale	4.69	2	Russell	4.06	2
Dallas	5.68	1	St. Clair	5.70	3
DeKalb	5.42	3	Shelby	8.70	21
Elmore	5.23	7	Sumter	n.a.	0
Escambia	7.71	1	Talladega	7.05	6
Etowah	6.22	1	Tallapoosa	5.96	4
Fayette	11.23	1	Tuscaloosa	8.19	4
Franklin	n.a.	0	Walker	n.a.	0
Geneva	n.a.	0	Washington	7.16	1
Greene	n.a.	0	Wilcox	5.88	2
Hale	n.a.	0	Winston	5.82	3
Henry	n.a.	0			

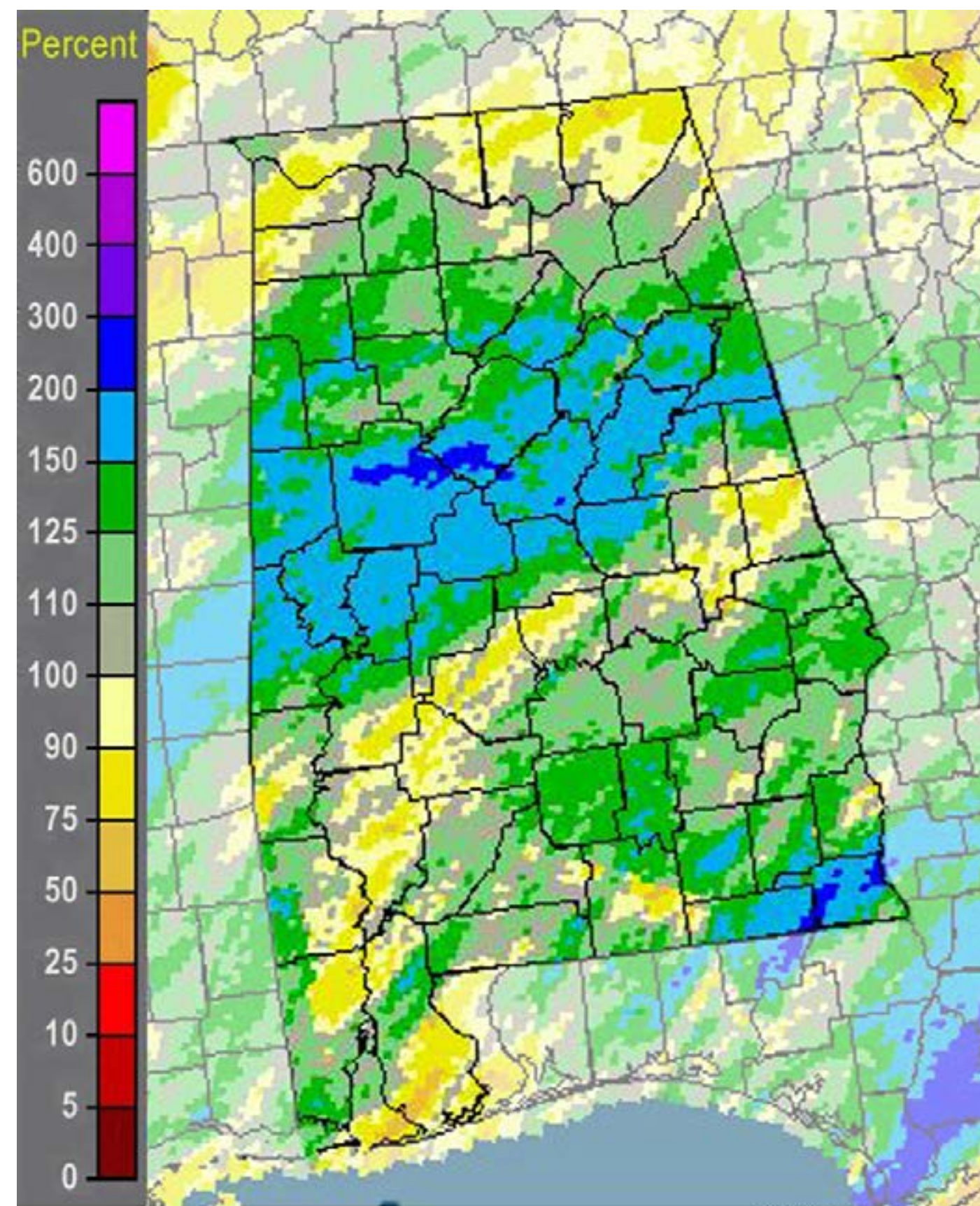
Normal December Precipitation*

Abbeville	4.62"
Alberta	5.22"
Alex City	4.84"
Aliceville	4.76"
Andalusia	5.04"
Ashland	5.09"
Athens	5.73"
Bay Minette	5.15"
Bessemer	4.90"
Billingsley	5.03"
Centreville WSMO	4.77"
Chatom	5.83"
Claiborne L&D	5.30"
Clayton	4.48"
Dauphin Isl.	4.34"
Elba	4.55"
Eufaula WR	4.73"
Evergreen	4.05"
Fayette	5.08"
Geneva 2	4.48"
Greenville	5.12"
Haleyville	5.80"
Hamilton 3S	5.80"
Heflin	4.94"
Hurtsboro	4.42"
Jasper	6.07"
Lafayette	4.95"
Livingston	4.96"
Melvin	6.15"
Milstead	4.96"
Moulton	5.70"
Oneonta	5.06"
Perryville	5.16"
Plantersville	5.35"
Rock Mills	5.10"
Rockford	5.03"
Sylacauga	5.01"
Union Springs	4.68"
Uniontown	4.88"
Vernon	5.14"
Warrior L&D	4.82"
Wetumpka	4.94"

*Southeast Regional Climate Center
www.serrc.com



December 2014 NWS multi-sensor precipitation estimate



December 2014 NWS percentage of normal precipitation

MONTHLY AND YEAR-TO-DATE RAINFALL - YEAR 2014

Choctawhatchee, Pea and Yellow Rivers Watershed Management Authority

Flood Warning System Rain and River Level Gauges

County	Gauge	Location & Water Body	Jan 2014	Feb 2014	March 2014	April 2014	May 2014	June 2014	July 2014	Aug 2014	Sept 2014	Oct 2014	Nov 2014	Dec 2014	YTD 2014
Barbour	Star Hill	AL Hwy. 239 S	2.64	5.20	4.84	10.60	3.52	4.20	4.72	2.92	0.52	3.32	2.64	4.32	49.44
	Star Hill		3.28	11.04	5.16	3.72	1.88	5.00	12.44	5.76	1.52	1.00	2.20	7.88	60.88
	Texasville	East Fork	3.40	5.00	4.40	14.80	3.08	2.88	2.92	2.12	1.52	4.64	2.04	5.52	52.32
	Texasville	Choctawhatchee	2.00	9.28	2.60	4.40	0.96	7.48	19.56	5.96	2.80	0.28	2.28	7.80	65.40
Coffee	Big Creek	Big Creek	3.24	5.60	4.48	13.68	5.44	4.64	3.76	4.36	2.60	4.16	2.20	5.76	59.92
	Big Creek	Hwy. 87 North	2.84	9.92	2.88	4.04	1.40	7.72	12.52	6.00	2.56	0.76	2.64	6.84	60.12
	Elba	Pea River	2.92	5.20	4.16	13.24	4.84	3.16	2.52	3.68	4.72	5.56	1.88	5.28	57.16
	Elba	Hwy. 84 East	2.64	12.08	2.56	4.24	1.16	6.24	12.72	6.60	4.84	0.32	2.36	6.68	62.44
	Enterprise	137 Lester Dr.	3.24	5.48	6.60	16.52	3.76	3.36	3.56	2.60	3.64	4.32	2.08	4.08	59.24
	Enterprise		2.08	13.08	2.16	3.92	1.28	5.04	17.12	8.52	3.64	0.52	2.92	7.56	67.84
	Folsom Bridge	Pea River	3.08	5.48	4.32	15.16	6.76	3.24	2.44	3.68	2.12	3.96	2.20	6.64	59.08
	Folsom Bridge	Hwy. 167 North	3.00	12.08	2.72	5.48	1.32	8.52	11.32	7.84	3.16	0.36	2.20	8.64	66.64
	Lowry Mill	Whitewater	3.16	6.04	4.28	13.84	4.36	6.60	3.80	3.56	4.40	3.84	2.32	4.96	61.16
	Lowry Mill	Creek	2.72	9.20	3.08	3.92	1.00	5.36	12.52	6.24	2.84	0.96	2.52	6.32	56.68
	New Brockton	Farm Center	3.00	4.96	5.16	16.20	4.72	2.88	3.68	3.12	4.92	3.92	2.48	6.56	61.60
	New Brockton	Hwy. 84	2.12	11.92	1.84	4.16	1.24	6.00	11.32	9.48	3.56	1.04	1.92	7.04	61.64
Covington	Yellow River	Yellow River	3.16	5.16	7.04	15.88	4.60	4.32	3.68	2.64	4.92	3.20	1.44	5.36	61.40
	Yellow River	Hwy. 55	3.52	12.28	2.12	3.76	2.00	9.28	8.88	7.40	6.04	1.32	2.16	6.36	65.12
	Yellow River*	Yellow River													
	Yellow River	Hwy. 84													
Dale	Arlton	Pea River	3.36	5.48	4.12	14.00	2.88	4.80	2.96	2.36	3.16	4.08	2.44	5.08	54.72
	Arlton	US Hwy. 231 North	2.72	8.92	3.08	4.72	3.00	11.68	12.60	7.20	2.08	0.80	2.24	8.72	67.76
	Daleville	Claybank Creek	2.60	6.00	6.44	16.08	2.52	3.68	4.60	4.52	4.48	4.20	2.72	5.04	62.88
	Daleville	Hwy. 84 West	1.72	14.48	2.48	5.16	1.36	4.16	19.08	9.08	3.80	1.20	2.36	8.44	73.32
	Newton	Choctawhatchee	2.44	5.32	5.48	14.16	5.76	3.12	4.52	2.32	2.04	4.28	2.32	5.36	57.12
	Newton	River, Hwy. 123 N	2.68	13.80	1.92	5.64	1.20	4.56	20.44	10.60	3.80	0.64	1.84	6.88	74.00
	Ozark	Little Claybank Cr.	2.84	5.48	4.56	15.04	3.92	1.56	3.56	2.76	3.52	4.08	2.16	4.60	54.08
	Ozark	US Hwy. 231	1.36	13.20	2.96	4.08	2.52	7.72	17.88	5.48	4.32	0.72	1.92	6.24	68.40
Skipperville	West Fork	2.80	5.68	4.44	12.28	3.28	3.80	2.84	1.56	5.80	4.64	3.32	5.36	55.80	
Skipperville	Choctawhatchee	2.52	12.96	3.16	4.36	0.76	10.20	17.32	6.52	3.20	0.32	1.80	7.60	70.72	

Alabama State Climatologist
 John R. Christy
 Alabama State Climatologist
 The University of Alabama
 in Huntsville
 christy@nsstc.uah.edu
 256-961-7763

Contact:

Phillip Gentry
 UAHuntsville Communications
 The University of Alabama in Huntsville
 gentry@nsstc.uah.edu
 256.961.7618

Bob Clymer
 Assistant State Climatologist
 The University of Alabama in Huntsville
 bob.clymer@nsstc.uah.edu
 256-961-7771

<http://nsstc.uah.edu/alclimatereport>

MONTHLY AND YEAR-TO-DATE RAINFALL - YEAR 2014

Choctawhatchee, Pea and Yellow Rivers Watershed Management Authority

Flood Warning System Rain and River Level Gauges

County	Gauge	Location & Water Body	Jan 2014	Feb 2014	March 2014	April 2014	May 2014	June 2014	July 2014	Aug 2014	Sept 2014	Oct 2014	Nov 2014	Dec 2014	YTD 2014
Geneva	Geneva	Choctawhatchee	3.68	6.28	7.52	14.16	4.88	3.32	6.24	1.08	2.52	3.92	2.24	7.32	63.16
	Geneva	River, Hwy. 52 E	2.48	21.44	1.72	4.20	1.12	7.80	21.44	9.08	8.48	1.04	2.80	7.88	89.48
	Sellersville	Double Bridges	2.48	5.16	6.52	14.12	5.52	2.92	3.72	1.08	1.88	4.28	2.60	6.00	56.28
	Sellersville	Creek, Cty. Rd. 40	1.96	17.84	1.64	3.84	1.20	7.32	14.56	7.48	5.08	0.60	2.52	6.92	70.96
Henry	East Choctaw	E. Choctawhatchee	2.80	5.24	4.72	12.92	5.40	3.24	4.72	1.24	4.40	5.60	2.56	6.16	59.00
	East Choctaw	Hwy. 27 East	1.92	12.64	2.52	5.80	0.92	6.84	14.32	5.68	2.84	1.36	2.12	7.76	64.72
Houston	Dothan	Little Choctaw	3.24	4.84	5.52	11.36	2.92	2.40	5.52	0.64	1.36	6.32	2.00	5.56	51.68
	Dothan	Brannon Stand Rd.	1.60	19.76	3.16	4.32	1.24	4.28	14.56	12.12	5.52	0.28	4.08	8.68	79.60
Pike	Troy	400 Pell Ave.	2.96	5.04	4.76	9.08	5.32	4.40	3.44	3.00	1.80	3.08	2.04	4.80	49.72
	Troy		1.84	10.72	4.12	2.72	1.20	5.04	14.20	4.96	1.28	1.16	1.76	6.56	55.56
	Shiloh	Hwy. 130 West	4.08	4.88	4.32	11.00	2.84	5.72	3.04	2.16	3.32	3.72	2.08	3.68	50.84
	Shiloh		2.80	8.72	3.36	3.60	3.12	4.60	10.80	6.96	2.04	1.36	2.40	7.76	57.52

*New gauge at Yellow River on Hwy. 84 currently being installed.

Choctawhatchee, Pea and Yellow Rivers Watershed Management Authority

400 Pell Avenue, Collegeview Building

Troy, AL 36082

(334) 670-3780

www.cpyrwma.alabama.gov

email: choctaw@troy.edu