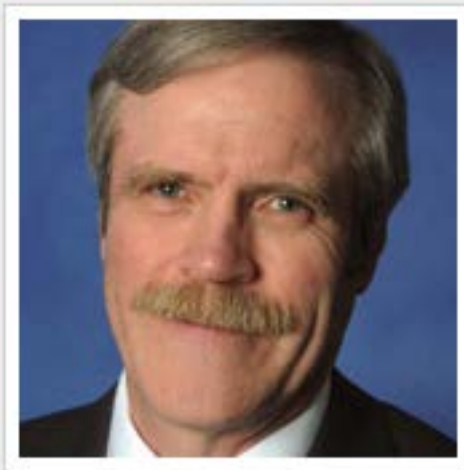


# The Alabama Climate Report

Brought to you by the Office of the Alabama Climatologist

**Volume 4, Number 1, October, 2013**



Dr. John Christy, Alabama State Climatologist

Dry came back to Alabama in October.

For farmers trying to harvest their crops, a bit of “dry” in October might not be such a bad thing. That is especially true when the statewide average for precipitation through September is more than 11” wetter than normal for the year.

Nonetheless, it was drier than normal in October and much drier in some places. Montgomery and Valley Head each saw less than half an inch of rain the entire month. Several stations, including Huntsville, Scottsboro, Guntersville, Troy, Dothan and Gadsden each got less than one inch.

Most of the “wetter” areas saw less than three inches. Anniston reported a soggy 2.88” for the month, while Greensboro and Selma got just over 2.7” in October.

While the state is significantly ahead of normal for annual rainfall, Alabama was dry enough in October to bring back large areas of “abnormally dry” to the state’s Drought Monitor.

As might be expected, drier also meant generally warm. The cold front that moved through the state Oct. 25-26 did bring a first freeze to much of the state, some places earlier than normal and some right on the nose, but that was not the norm for the month.

The availability of warm air, combined with other factors, is one reason Alabama has a bump in the number of tornadoes in November and December. This secondary severe weather season reminds those of us who live in this part of the country to be vigilant and prepared for nasty weather at all times.

Speaking of nasty weather, do you remember the New Year’s Eve/Day blizzard of 1963-64?

Because we are coming up on the 50th anniversary of that storm, which set many snowfall records across much of the state, my office is collecting material to document that storm. We are looking for personal accounts, photographs, newspaper and television stories, and official documents.

We will gather these items for the next two months and publish them on our website.

Across the state, snow started falling on Dec. 31, 1963. By the following day Florence had 19.2” of snow, and Huntsville saw more than 17 inches of snow fall (reportedly the heaviest snowfall since 1899), while Madison, Muscle Shoals and Russellville each reported 15”. Birmingham got 8 inches.

Chatom, in Washington County not too far from Mobile Bay, reported 10" of snow. Mobile measured 2 inches of snow, while a bit west along the gulf coast Bay St. Louis, Miss., got ten and a half inches of snow.

Brrrrr.

If you have any remembrances, material, photos or information about the blizzard that you can share, please send it to: [alabamaclimate@nsstc.uah.edu](mailto:alabamaclimate@nsstc.uah.edu)

I look forward to learning more about this record-setting storm.

- John Christy

### Alabama Monthly Climate Summaries

Oct. 2013

Station	Station Began	Oct. Mean Oct. Norm	Oct. Hi Temp Record Hi	Oct. Low Temp Record Lo	Total Precip. Normal Prec.	Wettest Oct. Driest Oct.	Heaviest Day Record Day
Anniston	2/1903	64.4° 62.9°	87° 99°	10/5/13 10/05/54	2.88" 2.87"	9.35" 0.15"	1995 1978
Auburn	1/1893	65.6° 62.5°	84° 94°+	10/05/13 10/6/54	0.50" 3.4"	10.24" 0.00"	1970 1963
Birmingham	1/1930	65.2° 62.9°	89° 94°	10/05/13 10/06/54	1.96" 3.23"	11.90" 0.07"	1995 1991
Brewton	4/1977	65.8° 64.5°	87.5° 97°+	10/04/13 10/5/54	1.03" 3.09"	14.95" 0.05"	1995 1998
Calera	9/1900	66.4° 62.2°	89° 95°	10/05/13 10/01/81	2.11" 4.16"	10.74" 0.00"	1918 1924
Clanton	2/1893	63.5° 62.0°	86.7° 98°	10/05/13 10/6/54	1.95" 3.14"	10.32" 0.00"	1995 1978
Courtland		61.6° M	87.1° M	10/05/13 M	1.42" M	M M	0.65" M
Cullman	7/1907	61.0° M	85.6° M	10/05/13 M	0.88" M	M M	0.41" M
Decatur	2/1880	62.5° 62.8°	87° 100°	10/05/13 10/05/1911	1.43" M	8.83" 0.00"	1932 1924
Dothan	2/1902	68.2° 68.0°	89° 95°	10/4/13 10/01/33	0.62" 3.25"	12.41" 0.00"	1932 1939
Fairhope	8/1917	67.3° 67.9°	85.9° 93°+	10/05/13 10/5/54	1.40" 3.57"	13.08" 0.00"	1985 1978
Gadsden	7/1893	62.4° 61.8°	88° 96°	10/05/13 10/5/54	0.88" 2.95"	9.00" 0.24"	1995 1978
Gainesville	6/1948	64.5° 63.5°	88.8° 94°	10/05/13 10/1/81	2.85" 3.15"	8.83" 0.03"	1985 1987
Greensboro	2/1890	64.4° 65.3°	90.2° 100°+	10/05/13 10/6/54	2.74" 3.37"	10.00" 0.20"	1995 1987
Guntersville	12/1904	62.9° 61.1°	85.2° 95°	10/05/13 10/5/54	0.94" 3.06"	7.65" 0.03"	1977 1991
Highland Home	3/1892	65.8° 64.9°	87.1° 94°	10/04/13 10/6/54	0.45" 2.87"	12.13" 0.00"	1995 1973
Huntsville	1/1959	63.7° 61.3°	88° 96°	10/05/13 10/08/1911	0.67" 3.54"	12.06" 0.01"	1975 2000

### U.S. Drought Monitor Alabama



October 29, 2013  
(Released Thursday, Oct. 31, 2013)  
Valid 7 a.m. EDT

	None	D0-D4	D1-D4	D2-D4	D3-D4	D4
Current	76.43	23.57	0.00	0.00	0.00	0.00
Last Week 10/22/2013	92.98	7.02	0.00	0.00	0.00	0.00
3 Months Ago 7/30/2013	100.00	0.00	0.00	0.00	0.00	0.00
Start of Calendar Year 1/1/2013	40.07	59.93	33.67	19.47	9.81	0.00
Start of Water Year 10/1/2012	96.85	3.15	0.00	0.00	0.00	0.00
One Year Ago 10/30/2012	86.90	33.10	20.73	11.92	6.82	0.00

**Intensity:**  
■ D0 Abnormally Dry    ■ D1 Moderate Drought  
■ D2 Severe Drought    ■ D3 Extreme Drought  
■ D4 Exceptional Drought

The Drought Monitor focuses on broad-scale conditions. Local conditions may vary. See accompanying text summary for forecast statements.

**Author:**  
Brian Fuchs  
National Drought Mitigation Center



<http://droughtmonitor.unl.edu/>

### Alabama Monthly Climate Summaries

Oct. 2013

Station Began	Oct. Mean Oct. Norm	Oct. Hi Temp Record Hi	Oct. Low Temp Record Lo	Total Precip. Normal Prec.	Wettest Oct. Driest Oct.	Heaviest Day Record Day
Mobile 3/1900	70.0° 67.7°	88° 10/4/13 95° 10/02/1904	42° 10/26/13 30° 10/31/93	2.19" 3.25"	13.20" 1985 0.00" 1978	1.29" 10/5/13 4.99" 10/29/85
Montgomery 6/1948	67.9° 65.4°	92° 10/05/13 100° 10/06/54	32° 10/26/13 26° 10/30/52	0.45" 2.58"	7.60" 1995 0.01" 1978	0.30" 10/06/13 4.02" 10/4/64
Muscle Shoals 12/1940	63.9° 61.5°	91° 10/05/13 94°+ 10/12/63	29° 10/26/13 25° 10/27/61	1.81" 3.22"	8.25" 1984 0.00" 2000	0.72" 10/6/13 3.24" 10/24/86
Russellville 9/1953	60.4° 59.6°	86.3° 10/05/13 93° 10/6/54	26.6° 10/26/13 19° 10/28/61	1.84" 3.43"	8.68" 1984 0.16" 2000	0.83" 10/06/13 3.33" 10/29/70
Scottsboro 10/1891	59.9° 60.0°	86.6° 10/05/13 96° 10/5/54	25.2° 10/26/13 20° 10/26/68	0.70" 3.61"	8.06" 1984 0.36" 1991	0.24" 10/16/13 4.70" 10/26/97
Selma 1/1895	64.6° 65.8°	88.6° 10/05/13 100°+ 10/6/54	32° 10/26/13 27° 10/30/52	2.73" 2.59"	9.24" 1995 0.06" 2000	2.08" 10/06/13 6.09" 10/5/95
Talladega 2/1888	62.5° 60.3°	87.2° 10/05/13 99° 10/5/54	29.4° 10/26/13 23°+ 10/25/65	2.63" 3.36"	11.01" 1995 0.02" 1978	1.58" 10/06/13 5.51" 10/5/95
Thomasville 9/1891	64.8° 65.7°	87.7° 10/05/13 100° 10/7/54	33.6° 10/26/13 29°+ 10/31/93	1.01" 2.9"	10.41" 1997 0.03" 1987	0.51" 10/06/13 5.80" 10/31/67
Troy 6/1908	67.4° 64.9°	91° 10/04/13 103° 10/5/54	32° 10/26/13 28° 10/24/37	0.76" 2.84"	12.19" 1995 0.06" 1987	0.35" 10/06/13 6.50" 10/4/95
Tuscaloosa 6/1948	66.5° 65.0°	91° 10/05/13 98° 10/04/54	34° 10/26/13 23° 10/30/52	1.09" 3.47"	9.11" 1995 0.12" 1987	0.59" 10/16/13 5.73" 10/25/77
Valley Head 1/1893	58.9° 57.9°	82.7° 10/05/13 93°+ 10/5/54	24.7° 10/26/13 19° 10/27/61	0.48" 3.29"	9.91" 1995 0.10" 1991	0.17" 10/06/13 6.02" 10/5/95
Statewide Oct. 2013	64.6°	92° Montgomery	27.7° Valley Head	1.47"	14.95" Brewton	2.08" Selma
Oct. Norm	63.4°	103° Troy	19° 2 stations	3.20"	0.00" 9 stations	7.50" Brewton

M: Data is missing or not available

\*New Record

#This data is missing this month due to an instrument malfunction

^ This record differs from long-term data in the AOSC climate database:  
[http://nsstc.uah.edu/aclimate/climate/daily\\_climate\\_and\\_normals.php](http://nsstc.uah.edu/aclimate/climate/daily_climate_and_normals.php)

### Community Collaborative Rain, Hail & Snow Network (CoCoRAHS)

October 2013

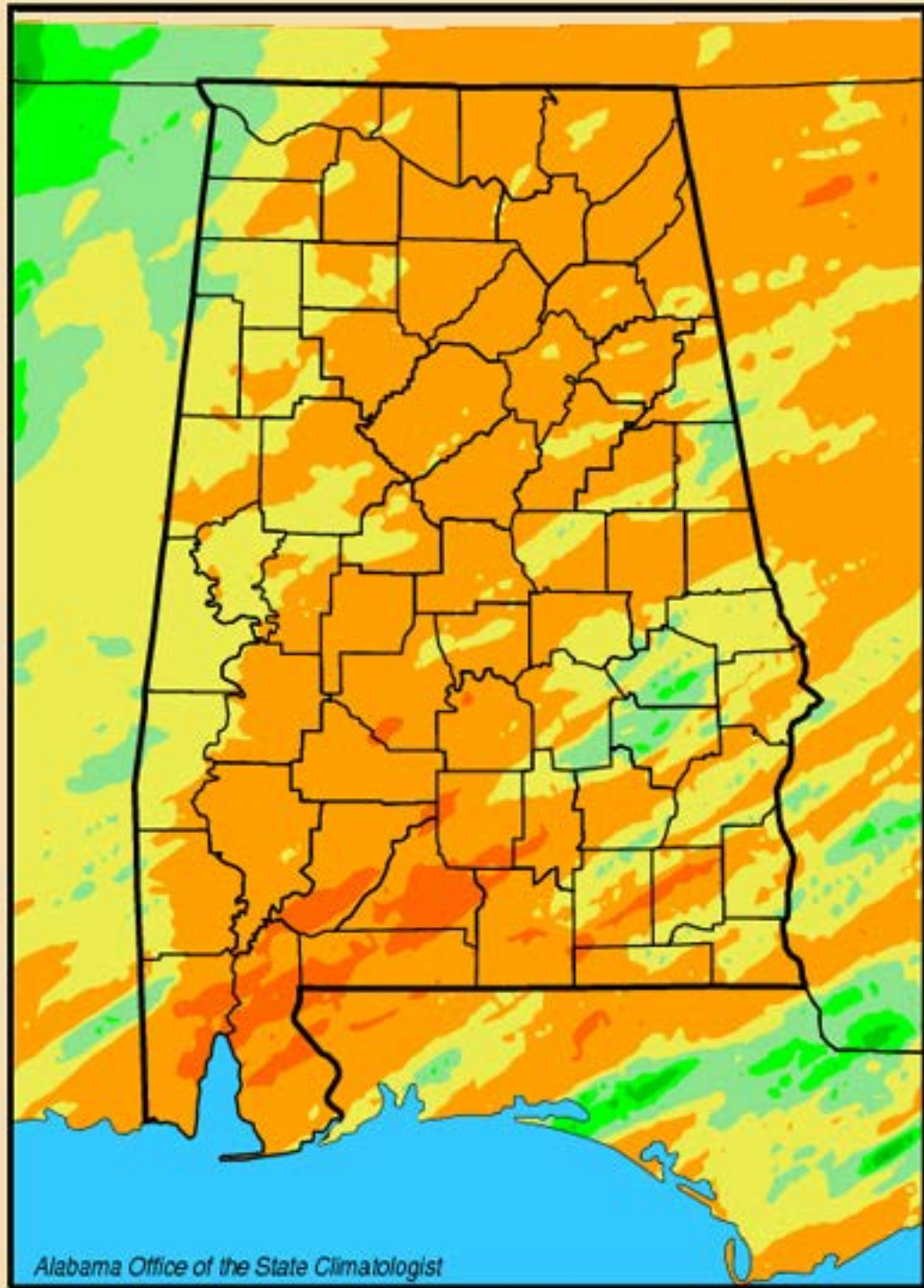
	Ave. Total Precip.	# Stations		Ave. Total Precip.	# Stations
Autauga	1.54	4	Houston	0.60	1
Baldwin	2.19	26	Jackson	0.93	7
Barbour	n.a.	0	Jefferson	2.00	14
Bibb	2.15	1	Lamar	2.65	1
Blount	0.91	7	Lauderdale	2.39	12
Bullock	n.a.	0	Lawrence	2.66	2
Butler	n.a.	0	Lee	0.75	4
Calhoun	1.72	3	Limestone	1.68	11
Chambers	0.84	1	Lowndes	n.a.	0
Cherokee	n.a.	0	Macon	0.76	2
Chilton	3.90	2	Madison	0.83	58
Choctaw	3.13	1	Marengo	n.a.	0
Clarke	1.94	2	Marion	2.99	1
Clay	n.a.	0	Marshall	0.66	12
Cleburne	n.a.	0	Mobile	2.70	19
Coffee	0.63	1	Monroe	0.72	2
Colbert	2.18	7	Montgomery	1.56	4
Conecuh	n.a.	0	Morgan	1.19	8
Coosa	2.59	2	Perry	n.a.	0
Covington	n.a.	0	Pickens	0.85	1
Crenshaw	n.a.	0	Pike	n.a.	0
Cullman	0.86	3	Randolph	1.76	1
Dale	0.94	2	Russell	1.07	2
Dallas	3.41	1	St. Clair	3.01	3
DeKalb	0.81	4	Shelby	2.35	22
Elmore	1.97	8	Sumter	n.a.	0
Escambia	1.08	1	Talladega	3.52	6
Etowah	1.25	1	Tallapoosa	2.02	5
Fayette	1.28	3	Tuscaloosa	2.20	3
Franklin	n.a.	0	Walker	n.a.	0
Geneva	n.a.	0	Washington	2.45	1
Greene	n.a.	0	Wilcox	1.68	2
Hale	n.a.	0	Winston	1.78	2
Henry	n.a.	0			

### Normal October Precipitation\*

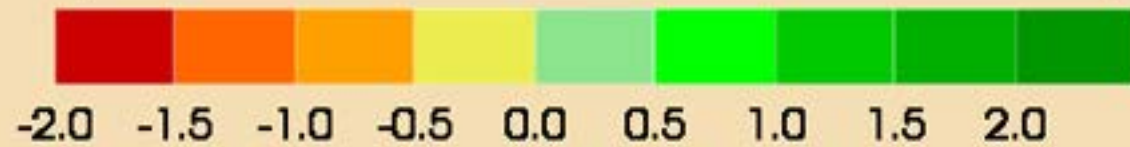
Abbeville	2.78"
Alberta	2.84"
Alex City	3.20"
Aliceville	3.16"
Andalusia	2.81"
Ashland	3.44"
Athens	3.17"
Bay Minette	3.33"
Bessemer	3.66"
Billingsley	2.42"
Centreville WSMO	3.32"
Chatom	3.29"
Claiborne L&D	2.87"
Clayton	2.50"
Dauphin Isl.	4.15"
Elba	2.69"
Eufaula WR	2.74"
Evergreen	3.00"
Fayette	3.07"
Geneva 2	3.49"
Greenville	2.71"
Haleyville	3.40"
Hamilton 3S	3.49"
Heflin	3.20"
Hurtsboro	3.49"
Jasper	3.67"
Lafayette	2.86"
Livingston	2.91"
Melvin	2.51"
Milstead	2.58"
Moulton	3.60"
Oneonta	2.97"
Perryville	2.67"
Plantersville	2.67"
Rock Mills	2.44"
Rockford	3.03"
Sylacauga	3.13"
Union Springs	2.68"
Uniontown	2.41"
Vernon	3.22"
Warrior L&D	3.34"
Wetumpka	2.56"

\*Southeast Regional Climate Center  
[www.serrc.com](http://www.serrc.com)

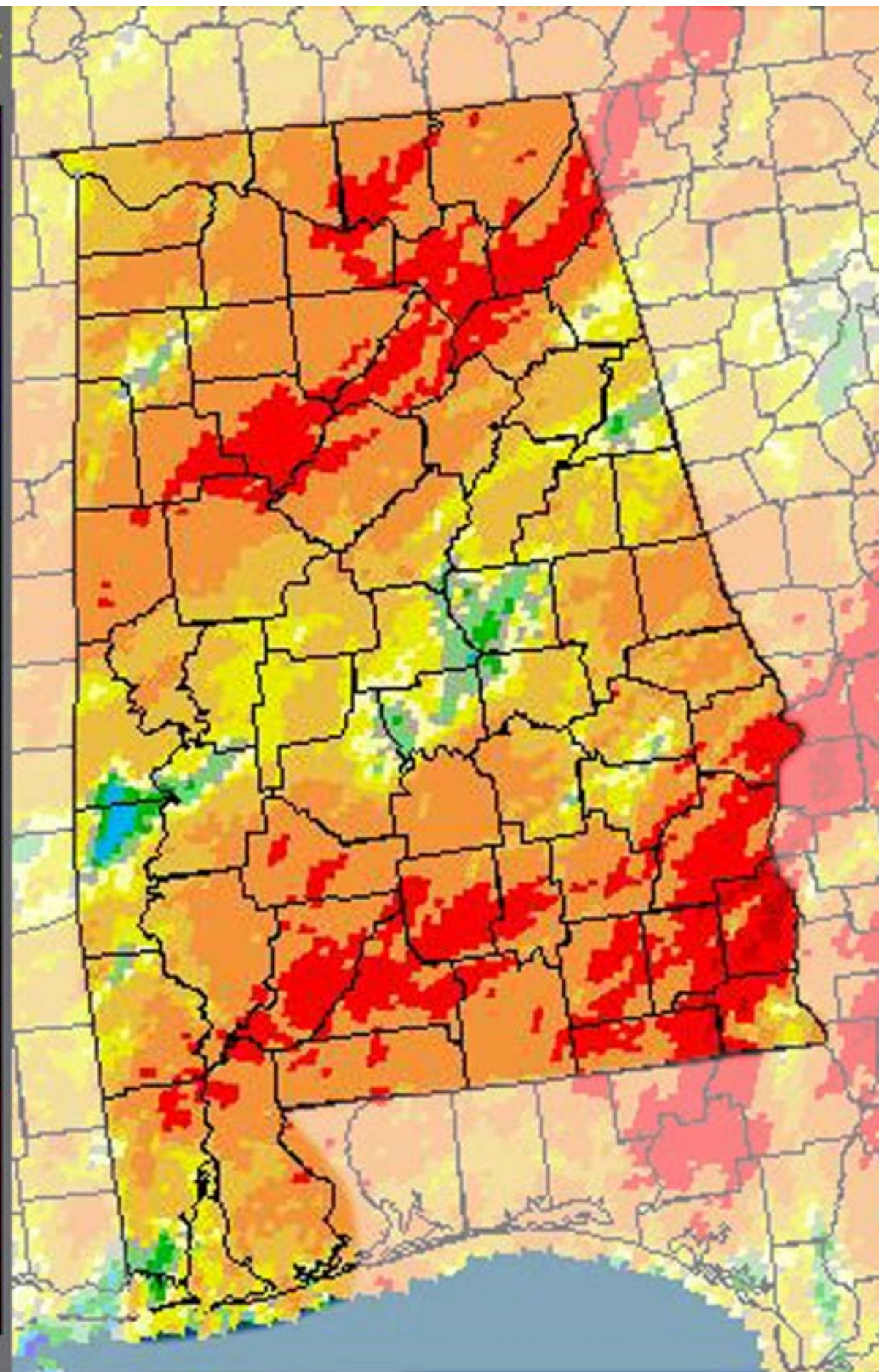
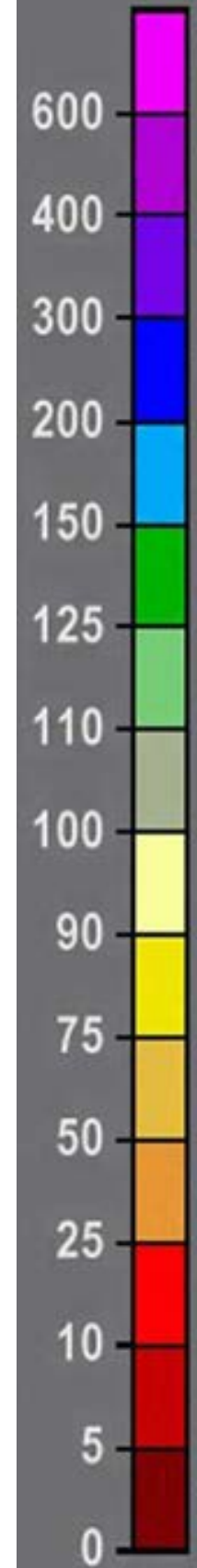
Lawn-and-Garden Moisture Index  
for November 4, 2013



Alabama Office of the State Climatologist

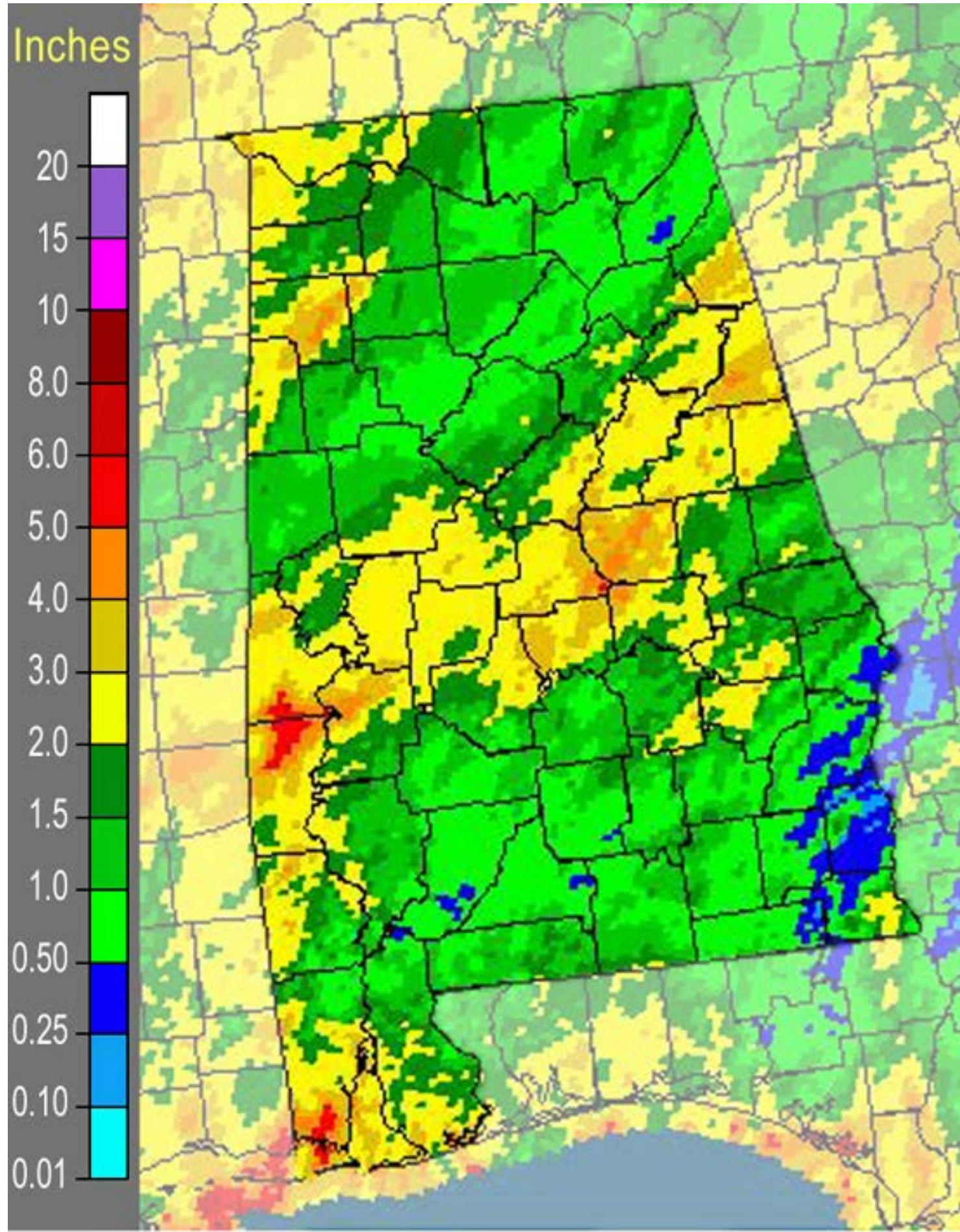


Percent



water.weather.gov

*Oct. 2013 NWS percentage of normal precipitation*



water.weather.gov

**October 2013 NWS multi-sensor precipitation estimate**

# New Local Climate Records<sup>1</sup>

## October 2013

### Precipitation, Daily

	Period of Record	New Record	Previous Record	Previous Year
<b>7 October 2013</b>				
ASHLAND 3 ENE	73	2.80 in	1.10 in	1968
CHATOM	64	1.78 in	1.31 in	1998
CHILDERSBURG WTR PL	56	2.36 in	1.02 in	2002
CLANTON	120	1.61 in	1.22 in	2000
COFFEEVILLE L&D	30	1.54 in	0.42 in	2001
DEMOPOLIS LOCK & DAM	62	1.85 in	1.23 in	1968
LAY DAM	76	2.11 in	1.40 in	1968
LOGAN MARTIN DAM	32	2.68 in	1.17 in	2009
MELVIN	73	2.01 in	1.18 in	1968
MITCHELL DAM	76	2.71 in	1.92 in	1954
SYLACAUGA 4 NE	63	1.68 in	1.22 in	1965
TALLADEGA	125	1.65 in	1.60 in	2009
THORSBY EXP STATION	56	1.77 in	1.10 in	2000
WEISS DAM	31	0.79 in	0.36 in	1982
<b>8 October 2013</b>				
PLANTERSVILLE 2 SSE	73	2.00 in	0.90 in	1981
<b>19 October 2013</b>				
WARRIOR LOCK & DAM	55	3.00 in	1.48 in	1970

### Minimum Low Temperature, Daily

	Period of Record	New Record	Previous Record	Previous Year
<b>24 October 2013</b>				
OPELIKA.....	52	26.1°F	30.9°F	2006
<b>26 October 2013</b>				
BESSEMER 3 WSW.....	34	30.9°F	33.1°F	1980
<b>27 October 2013</b>				
ALEXANDER CITY.....	41	30.9°F	33.1°F	1982

<sup>1</sup> <http://wlf.ncdc.noaa.gov/extremes/records/>

**Alabama State Climatologist**

**John R. Christy**

Alabama State Climatologist  
The University of Alabama  
in Huntsville  
christy@nsstc.uah.edu  
256-961-7763

**Contact:**

**Phillip Gentry**

UAHuntsville Communications  
The University of Alabama in Huntsville  
gentry@nsstc.uah.edu  
256.961.7618

**Bob Clymer**

Assistant State Climatologist  
The University of Alabama in Huntsville  
bob.clymer@nsstc.uah.edu  
256-961-7771

<http://nsstc.uah.edu/alclimatereport>