

The Alabama Climate Report

Brought to you by the Office of the Alabama Climatologist

Volume 4, Number 10, July 2014



Dr. John Christy, Alabama State Climatologist

July was cool. To paraphrase the Tonight Show audience, how cool was it?

Pretty cool. We saw three legitimate cold fronts arrive from the north, setting several records for both daily low temperatures and for cool daytime highs. In Montgomery, where weather observations go back to 1872, the all-time July record low temperature set in 2009 was tied at 59° F on Wednesday, July 30.

Both Muscle Shoals and Hamilton, with substantially shorter weather records, saw their coolest high temperature records for the month of July broken, when each saw a day with the high temperature of only 71° F.

There were some noteworthy readings scattered about the state. Scottsboro set a daily record for July 14, when the temperature dropped to 49°. That broke the previous record for that day, 55°, which was set on July 14, 1897! When you break a record that stood for more than 110 years and you do it by six degrees, that's noteworthy.

Hamilton's climate record isn't as long, but the record-setting chilly high temperature on July 19 was also noteworthy. Not only was it Hamilton's coolest July high on record, it broke the record for July 19 by 14 degrees!

Huntsville and Tuscaloosa each saw their daily record low highs for July 18 broken by eleven degrees, as did Gainesville on July 19.

It will be a couple of days before our friends in the National Weather Service tally the statewide average temperature for July, but we won't be surprised if it turns out to be one of the coolest on record.

July temperatures like these fit into the state's 130-year cooling trend, although we can't use that trend to make accurate forecasts. Mother Nature can turn things around at any time and give us summer hot spells like those the old timers remember from the 1930s and early 1950s.

Speaking of past times, this August is the 75th anniversary of the wettest August in the state's official 119-year climate record. While Alabama averages 5.5" of rain in August, and the third wettest August on record (1942) saw only 6.87", the statewide average rainfall of August 1939 was 11.12".

As is so often the case in Alabama, that extraordinary rainfall was brought to us by a hurricane (back

in the day before someone gave every hurricane, depression and thunderstorm a name), which deteriorated into a tropical depression that lingered over the state for three days before moving on to cause flooding up the east coast to Virginia, Maryland, and New York.

While the official record seems to largely overlook any damage in Alabama, the storm drenched much of Alabama from the Florida line to Birmingham. The Red Cross estimated that between 4,500 and 5,000 people were forced out of their homes. Crop damage was estimated in the millions of dollars (multiply by 17 to get the current value).

Prattville seemed to be at the epicenter of flooding. An AP story from Aug. 16, 1939, said: "Flood waters, already inundating a wide swatch of this Central Alabama town, moved upward this afternoon as alarming high water conditions developed further downstream."

One person was killed when a locomotive he was driving hit a washout and rolled into deep floodwater.

A Coast Guard boat sent north from Mobile to lend aid in rescuing stranded refugees had to stop at Miller's Ferry because the Alabama River was so high there wasn't enough space between the water and a bridge for the boat to squeeze through.

Official rainfall records for the month show some pretty staggering amounts:

Geneva	23.73"
Centreville	18.65"
Clanton	18.22"
Montgomery	15.58"
Greenville	13.37"
Birmingham	11.45"
Auburn	9.34"

A story published on Sunday, Aug. 20, noted that the flooding on the Alabama River had splashed "within three feet of the record 1884 flood."

Other places outside the storm system saw less rain. Waterloo, in the northwest corner of the state, was the driest spot in the state with only 1.63" of rain for the entire month of August 1939.

August 1939 is especially worth noting because we are still in the hurricane season. Just because Aug. 23 will mark nine years since a major (Category 3 or stronger) hurricane hit the U.S. doesn't mean we shouldn't be prepared. Even an unremarkable storm like the hurricane of August 1939 can be a record breaker.

- John Christy

U.S. Drought Monitor Alabama

July 29, 2014

(Released Thursday, Jul. 31, 2014)

Valid 8 a.m. EDT

Drought Conditions (Percent Area)

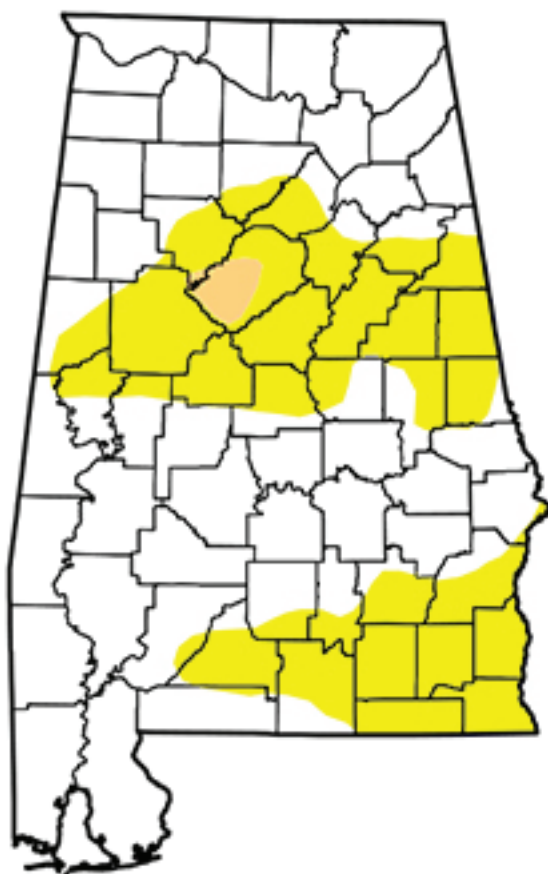
	None	D0-D4	D1-D4	D2-D4	D3-D4	D4
Current	67.19	32.81	0.95	0.00	0.00	0.00
Last Week 7/22/2014	81.05	18.95	0.00	0.00	0.00	0.00
3 Months Ago 4/29/2014	97.11	2.89	0.00	0.00	0.00	0.00
Start of Calendar Year 12/31/2013	97.35	2.65	0.00	0.00	0.00	0.00
Start of Water Year 10/1/2013	96.85	3.15	0.00	0.00	0.00	0.00
One Year Ago 7/29/2013	100.00	0.00	0.00	0.00	0.00	0.00

Intensity:

 D0 Abnormally Dry	 D3 Extreme Drought
 D1 Moderate Drought	 D4 Exceptional Drought
 D2 Severe Drought	

The Drought Monitor focuses on broad-scale conditions. Local conditions may vary. See accompanying text summary for forecast statements.

Author:
Brad Rippey
U.S. Department of Agriculture



<http://droughtmonitor.unl.edu/>

Alabama Monthly Climate Summaries

July 2014

	Station Began	July Mean July Norm	July Hi Temp Record Hi	July Low Temp Record Low	Total Precip. Normal Prec.	Wettest July Driest July	Heaviest Day Record Day
Anniston	2/1903	77.8°	96° 7/27/14	54° 7/30/14	*0.57"	12.21" 1975	1.00" 7/30/14
		80.1°	105° 7/13/80	50° 7/15/67	4.49"	0.79" 1983	5.13" 7/7/75
Auburn	1/1893	76.7°	91° 7/14/14	57° 7/30/14	2.76"	15.73" 1916	1.09" 7/19/14
		79.9°	108° 7/11/30	52° 7/15/67	5.37"	1.39" 1914	7.00" 7/10/48
Birmingham	1/1930	78.7°	97° 7/27/14	57° 7/30/14	0.92"	10.07" 1985	0.49" 7/14-15/14
		80.2°	107° 7/29/30	51° 7/15/67	5.09"	0.30" 1983	5.47" 7/27/85
Brewton	4/1977	77.5°	93.2° 7/27/14	58.9° 7/31/14	6.43"	19.08" 1975	1.77" 7/25/14
		80.1°	106° 7/24/52	51° 7/15/67	7.04"	1.66" 2000	7.88" 7/31/75
Calera	9/1900	79.2°	94° 7/28/14	60° 7/30/14	3.06"	18.52" 1916	1.80" 7/23/14
		79.3°	105° 7/7/77	50° 7/15/67	5.36"	0.42" 1983	7.00" 7/7/1916
Clanton	2/1893	76.9°	92.8° 7/2/14	55.1° 7/30/14	3.27"	13.97" 1971	1.17" 7/2/14
		79.2°	108°+ 7/26/52	53° 7/15/67	5.76"	1.29" 1995	7.14" 7/4/40
Courtland		74.9° M	91.5° 7/14/14 M	55.3° 7/5/14 M	4.85" M	M M	2.20" 7/20/14 M
Cullman	7/1907	73.9°	90.6° 7/27/14	53.6° 7/30/14	2.24"	M	0.92" 7/18/14
		M	M	M	4.44"	M	M
Decatur	2/1880	75.4°	93° 7/27/14	54° 7/30/14	4.26"	10.89" 1958	2.03" 7/18-19/14
		80.5°	107° 7/12/1901	38° 7/8/34	4.22"	0.67" 1962	4.65" 7/16/50
Dothan	2/1902	80.7°	96° 7/9/14	62° 7/31/14	5.21"	12.73" 1948	1.98" 7/28/14
		81.3°	103° 7/24/52	57° 7/5/1902	5.86"	2.12" 1903	6.73" 7/9/48
Fairhope	8/1917	78.7°	92.3° 7/28/14	59.7° 7/31/14	5.83"	28.58" 1997	2.13" 7/19/14
		81.5°	101° 7/16/80	59° 7/16/67	8.00"	0.82" 1983	14.52" 7/20/97
Gadsden	7/1893	76.8°	95° 7/27/14	55° 7/30/14	5.41"	13.41" 1985	*4.96" 7/14/14
		79.8°	103°+ 7/15/66	52° 7/11/63	4.47"	0.79" 1980	3.36" 7/9/58
Gainesville Lock	6/1948	77.0°	93.7° 7/27/14	57.4° 7/30/14	3.30"	8.11" 1992	1.20" 7/9/14
		80.8°	105°+ 7/15/80	55° 7/15/67	2.91"	0.37" 1990	4.12" 8/10/70
Greensboro	2/1890	76.5°	93.3° 7/27/14	54.1° 7/30/14	3.54"	11.03" 1985	1.43" 7/24/14
		81.9°	107°+ 7/16/80	56° 7/23/47	5.38"	1.19" 2000	3.90" 7/18/36
Highland Home	3/1892	77.4°	92.4° 7/27/14	60.4° 7/30/14	2.77"	10.79" 1994	1.11" 7/21/14
		79.6°	105° 7/15/80	54° 7/15/67	4.93"	1.19" 1978	3.15" 7/8/48
Huntsville	1/1959	77.5°	94° 7/12/14	56° 7/30/14	4.47"	14.81" 1967	1.70" 7/18-19/14
		79.5°	104° 7/14/66	53° 7/15/67	4.50"	0.79" 1983	4.81" 7/5/2001

Alabama Monthly Climate Summaries

July 2014

	Station Began	July Mean July Norm	July Hi Temp Record Hi	July Low Temp Record Lo	Total Precip. Normal Prec.	Wettest July Driest July	Heaviest Day Record Day
Mobile	3/1900	79.8° 81.5°	94° 7/28/14 104° 7/25/52	63° 7/31/14 62°+ 7/16/67	7.92" 6.54"	13.14" 1982 1.72" 1983	4.07" 7/18-19/14 4.21" 7/18/89
Montgomery	6/1948	81.1° 81.8°	97° 7/27/14 105°+ 7/25/52	59° 7/30/14 60° 7/1/50	2.28" 5.31"	9.99" 1988 1.69" 2000	2.08" 7/19/14 3.84" 7/14/73
Muscle Shoals	12/1940	76.6° 80.2°	96° 7/1/14 106°+ 6/29/52	55° 7/30/14 53°+ 6/7/72	5.02" 4.52"	14.40" 1975 0.92" 1977	2.60" 7/8-9/14 5.60" 7/28/72
Russellville	9/1953	72.9° 78.0°	90.3° 7/14/14 103° 7/18/80	51.4° 7/5/14 45° 7/8/70	5.11" 4.65"	10.82" 1994 1.27" 1978	2.41" 7/18/14 3.10" 7/24/83
Scottsboro	10/1891	73.8° 78.6°	91.2° 7/14/14 109° 7/13/30	53.7° 7/30/14 49°+ 7/10/63	5.56" 4.53"	7.59" 1984 1.32" 1980	3.39" 7/21/14 3.43" 7/22/41
Selma	1/1895	73.8° 81.5°	91.2° 7/14/14 107°+ 7/14/80	53.7° 7/30/14 57° 7/15/67	5.56" 4.28"	8.45" 1994 1.11" 2000	3.39" 7/21/14 3.96" 7/7/94
Talladega	2/1888	77.2° 78.2°	95.3° 7/27/14 107°+ 7/17/80	54.2° 7/30/14 51°+ 7/6/72	1.72" 4.75"	9.11" 1985 1.40" 1991	0.82" 7/20/14 3.05" 7/8/58
Thomasville	9/1891	77.0° 81.4°	93.1° 7/2/14 107° 7/13/30	57.1° 7/30/14 56° 7/15/67	4.55" 6.05"	15.91" 1988 0.69" 2000	1.36" 7/20/14 5.52" 7/6/88
Troy	6/1908	79.5° 80.5°	97° 7/27/14 107° 7/7/36	58° 7/30/14 56° 7/15/67	2.12" 5.80"	15.59" 1994 1.66" 2000	0.87" 7/18/14 4.55" 7/1/84
Tuscaloosa	6/1948	79.0° 81.8°	97° 7/27/14 107° 7/24/52	56° 7/30/14 54° 7/1/50	0.92" 5.00"	12.27" 1997 0.72" 1970	0.49" 7/14-15/14 4.57" 7/21/97
Valley Head	1/1893	72.4° 76.2°	89.2° 7/27/14 105°+ 7/29/52	50.6° 7/30/14 45° 7/15/67	2.74" 5.18"	11.74" 1976 .94" 1987	1.06" 7/22/14 4.52" 7/5/76
Statewide July 2014		77.20°	97° 4 stations	51.4° Russellville	3.81"	28.58" Fairhope	3.90" Brewton
July Norm		80.14°	109° Scottsboro	38° Decatur	5.20"	0.30" Birmingham	14.52" Clanton

M: Data is missing or not available

*New Record

#This data is missing this month due to an instrument malfunction

^ This record differs from long-term data in the AOSC climate database:

http://nsstc.uah.edu/alclimate/climate/daily_climate_and_normals.php

Community Collaborative Rain, Hail & Snow Network (CoCoRAHS)

July 2014

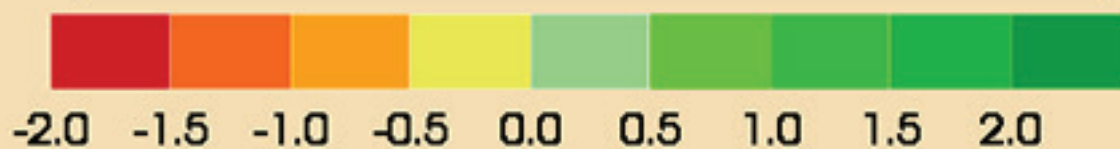
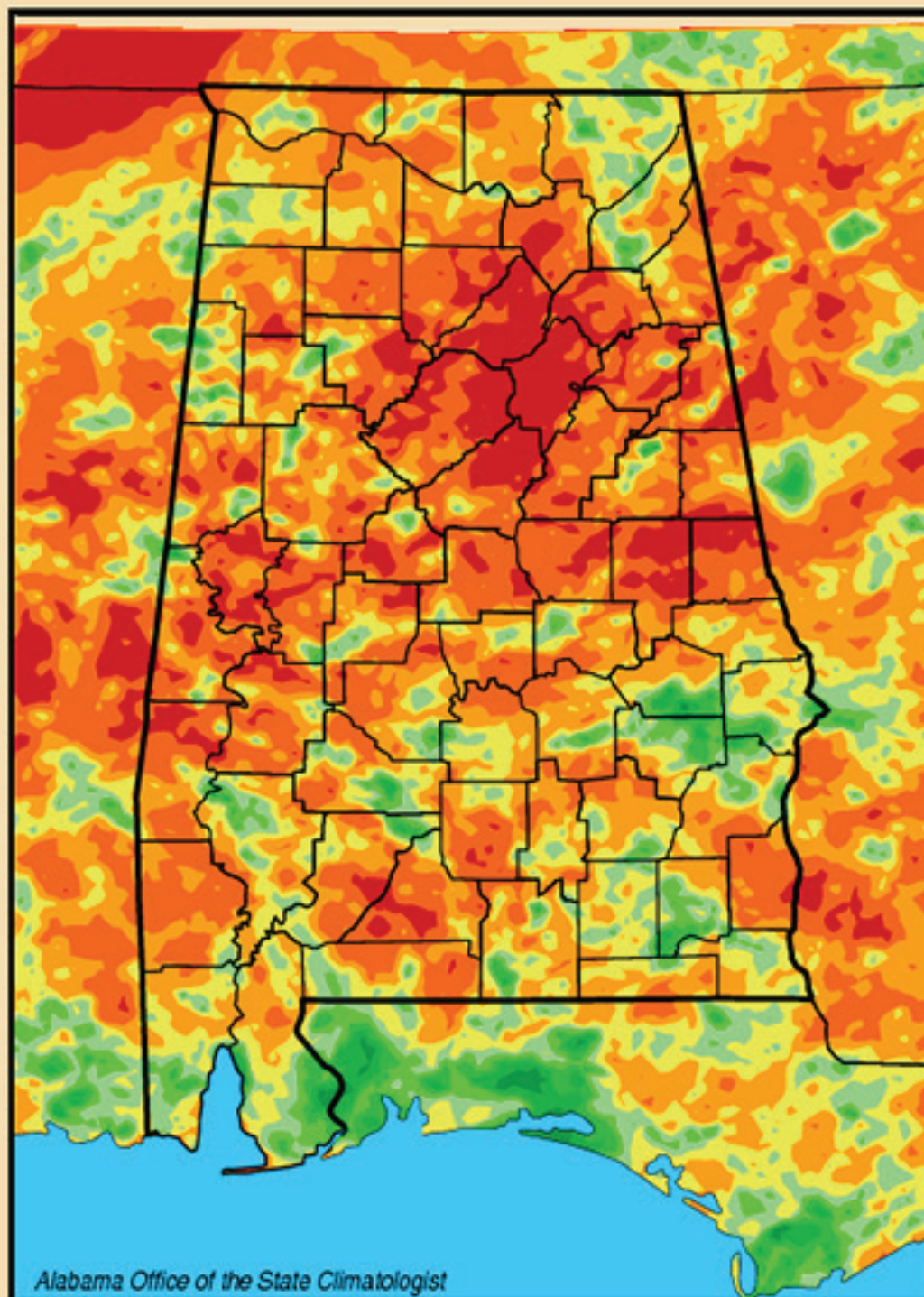
	Ave. Total Precip.	# Stations
Autauga	3.50	3
Baldwin	6.72	24
Barbour	n.a.	0
Bibb	5.69	1
Blount	1.60	9
Bullock	n.a.	0
Butler	n.a.	0
Calhoun	3.26	2
Chambers	n.a.	0
Cherokee	3.66	1
Chilton	1.77	2
Choctaw	1.84	1
Clarke	2.49	3
Clay	n.a.	0
Cleburne	n.a.	0
Coffee	5.19	1
Colbert	5.69	7
Conecuh	n.a.	0
Coosa	2.95	2
Covington	n.a.	0
Crenshaw	n.a.	0
Cullman	2.05	4
Dale	5.16	2
Dallas	3.81	1
DeKalb	3.48	2
Elmore	3.96	7
Escambia	3.82	1
Etowah	5.86	1
Fayette	2.84	3
Franklin	n.a.	0
Geneva	n.a.	0
Greene	n.a.	0
Hale	n.a.	0
Henry	n.a.	0

	Ave. Total Precip.	# Stations
Houston	3.80	1
Jackson	5.61	7
Jefferson	1.92	13
Lamar	4.00	1
Lauderdale	6.31	11
Lawrence	5.16	2
Lee	2.76	4
Limestone	4.05	11
Lowndes	n.a.	0
Macon	n.a.	0
Madison	4.63	56
Marengo	n.a.	0
Marion	2.97	1
Marshall	3.17	11
Mobile	6.13	15
Monroe	2.68	2
Montgomery	3.65	3
Morgan	3.12	9
Perry	n.a.	0
Pickens	2.43	1
Pike	n.a.	0
Randolph	4.69	1
Russell	6.05	2
St. Clair	1.25	4
Shelby	1.76	22
Sumter	n.a.	0
Talladega	1.83	6
Tallapoosa	4.70	4
Tuscaloosa	2.07	4
Walker	n.a.	0
Washington	3.33	1
Wilcox	3.05	2
Winston	4.21	2

Normal July Precipitation*	
Abbeville	6.14"
Alberta	5.00"
Alex City	5.14"
Aliceville	4.55"
Andalusia	6.47"
Ashland	5.64"
Athens	4.30"
Bay Minette	8.08"
Bessemer	5.25"
Billingsley	5.33"
Centreville WSMO	5.15"
Chatom	6.21"
Claiborne L&D	5.39"
Clayton	5.91"
Dauphin Isl.	6.43"
Elba	6.45"
Eufaula WR	5.14"
Evergreen	6.41"
Fayette	4.77"
Geneva 2	5.94"
Greenville	5.86"
Haleyville	4.94"
Hamilton 3S	4.67"
Heflin	4.82"
Hurtsboro	5.23"
Jasper	5.25"
Lafayette	5.52"
Livingston	5.76"
Melvin	5.94"
Milstead	5.19"
Moulton	4.47"
Oneonta	5.66"
Perryville	5.04"
Plantersville	5.18"
Rock Mills	5.12"
Rockford	5.82"
Sylacauga	5.13"
Union Springs	5.62"
Uniontown	5.11"
Vernon	5.29"
Warrior L&D	4.12"
Wetumpka	4.71"

*Southeast Regional Climate Center
www.serrc.com

Lawn-and-Garden Moisture Index for August 4, 2014



Alabama Climate Report

Climate Extremes

Wettest - Driest

Statewide Average Precipitation

http://www.sercc.com/climateinfo/monthly_seasonal.html

Record begins in 1895

Alabama Climate Report

Climate Extremes

Hottest - Coldest

Statewide Average Temperature

http://www.sercc.com/climateinfo/monthly_seasonal.html

Record begins in 1895

Year to Date

Wettest	1.	1929	39.86"
	2.	1980	36.48"
	3.	1979	36.19"
	4.	1991	36.02"
	5.	1983	35.63"
	6.	1973	35.23"
	7.	1975	34.46"
	8.	1990	34.31"
	9.	1922	34.24"
	10.	1912	34.03"
	11.	1944	33.92"
	12.	1964	33.68"

January through May 2014	33.	2014	28.03"
	AVG		25.26"

12.	1967	18.30"
11.	1927	18.06"
10.	2000	17.88"
9.	1910	17.54"
8.	1904	17.52"
7.	1931	17.19"
6.	1954	16.94"
5.	1986	16.06"
4.	1914	15.22"
3.	1898	14.59"
2.	1941	13.75"

Driest	1.	2007	13.18"
--------	----	------	--------

Year-to-date

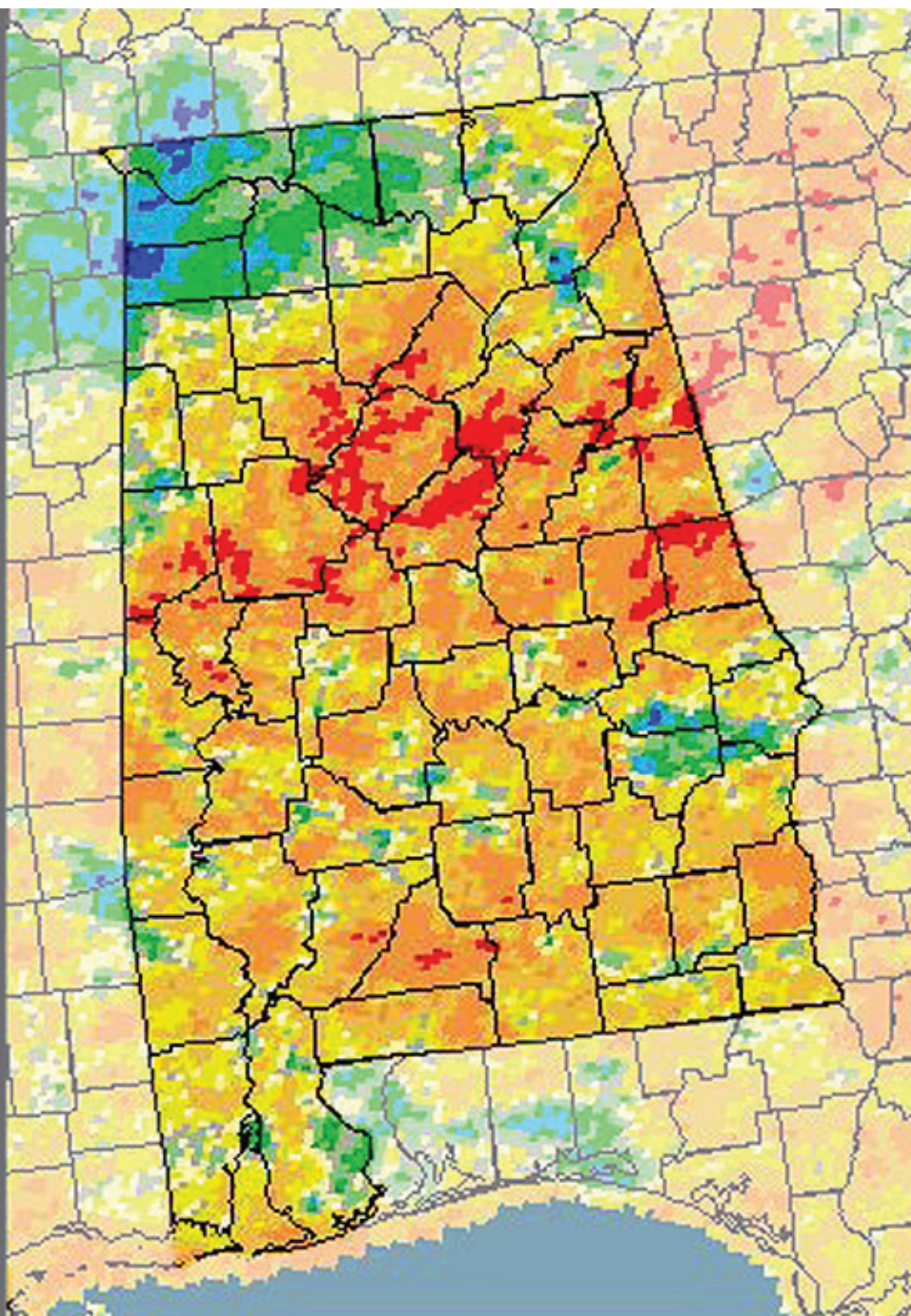
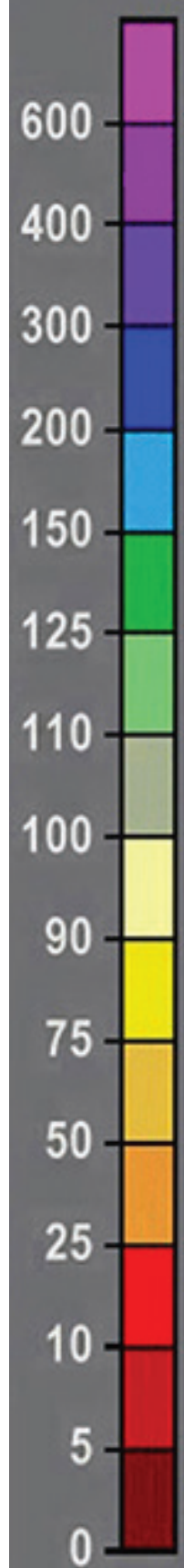
Hottest	1.	2012	61.04°
	2.	1927	60.34°
	3.	1911	59.60°
	4.	1938	59.46°
		1950	59.46°
	6.	1974	59.32°
	7.	1921	58.94°
	8.	1957	58.86°
	9.	1922	58.72°
	10.	1945	58.68°
		1990	58.68°
	12.	1925	58.64°

January through May 2014	AVG		56.34°
	12.	1979	54.06°

11.	2014	53.90°
10.	2010	53.86°
9.	1971	53.72°
8.	1895	53.58°
7.	1924	53.48°
6.	1968	53.44°
5.	1983	53.42°
4.	1960	53.22°
3.	1958	52.58°
2.	1940	51.94°

Coldest	1.	1978	51.90°
---------	----	------	--------

Percent



water.weather.gov

July 2014 NWS percentage of normal precipitation

New Local Climate Records¹

July 2014

Minimum Low Temperature, Daily

	New Record	Previous Year	Previous Record	Period of Record
5 July 2014				
ATMORE.....	63	1944	64	74
BELLE MINA.....	56	1968	57	64
BIRMINGHAM AIRPORT.....	58	1972	59	84
CODEN.....	62	1982	67	57
GENEVA NUMBER 2.....	61	1985	66	38
HAMILTON 3 S.....	51	1970	53	52
HUNTSVILLE INTL AIRPORT.....	57	1961	59	55
JACKSON.....	62	2000	66	30
MOBILE DTN AIRPORT.....	66	1961	70	65
MOBILE REG. AIRPORT.....	64	2000	69	66
MONTGOMERY AIRPORT.....	64	1961	65	66
MOULTON 2.....	53	1961	55	57
TUSCALOOSA AIRPORT.....	60	1961	61	66
6 July 2014				
GENEVA NUMBER 2.....	64	1985	65	38
JACKSON.....	62	2011	66	30
14 July 2014				
SCOTTSBORO.....	49	1897	55	122
17 July 2014				
CLAYTON.....	61	2001	62	58
ENTERPRISE 2 W.....	65	1987	67	48
FAIRHOPE 2 NE.....	63	1967	64	96
MOULTON 2.....	56	1970	60	57
OPELIKA.....	57	1967	59	57
SCOTTSBORO.....	55	1970	56	122
18 July 2014				
ALEXANDER CITY.....	61	2009	63	44
BANKHEAD LOCK & DAM.....	60	1967	61	57
CLAYTON.....	61	2001	62	58
CODEN.....	63	1967	65	57
FAIRHOPE 2 NE.....	64	1967	66	96
GENEVA NUMBER 2.....	62	1977	66	38
HAMILTON 3 S.....	53	1976	54	52
JACKSON.....	60	2001	66	30

19 July 2014

CLAYTON.....61 2001 62 58

20 July 2014

DAUPHIN ISLAND No. 2.....71 2012 72 38

25 July 2014

HAMILTON 3 S.....57 2009 58 52

28 July 2014

BESSEMER 3 WSW.....63 2013 64 37

MOULTON 2.....60 2013 61 57

MUSCLE SHOALS AIRPORT.....62 1990 63 73

WINFIELD 2 SW.....59 1990 60 38

29 July 2014

ANNISTON AIRPORT.....62 1994 63 111

MOULTON 2.....59 2004 60 57

TUSCALOOSA AIRPORT.....61 2004 65 66

30 July 2014

ALEXANDER CITY.....56 1994 62 44

BESSEMER 3 WSW.....57 1994 58 37

BREWTON 3 SSE.....62 1994 64 88

GAINESVILLE.....58 1994 62 56

GREENSBORO.....57 1994 64 122

GREENVILLE.....57 1944 64 87

HALEYVILLE.....56 1981 59 111

JASPER.....55 1994 57 53

MOULTON 2.....54 1965 56 57

SAND MT SUBSTATION.....53 1965 56 64

SYLACAUGA 4 NE.....53 1994 58 59

TALLADEGA.....53 1983 59 120

VERNON.....55 1994 56 57

31 July 2014

ALEXANDER CITY.....60 1981 61 44

BREWTON 3 SSE.....59 1947 63 88

DEMOPOLIS LOCK & DAM.....58 1965 63 62

ENTERPRISE 2 W.....62 1984 65 48

FAIRHOPE 2 NE.....61 1994 67 96

GAINESVILLE.....58 1994 62 56

GENEVA NUMBER 2.....58 1984 64 38

SCOTTSBORO.....56 1969 57 122

SYLACAUGA 4 NE.....53 1993 55 59

Coollest High Temperature, July

	New Record	Previous Date	Previous Record	Length of Record
18 July 2014				
MUSCLE SHOALS AIRPRT	71	1970-07-22	73	73
19 July 2014				
HAMILTON 3 S	71	1970-07-22	72	52

Lowest Temperature, Month of July

	Period of Record	New Record	Previous Record	Previous Date
7 January 2014				
GENEVA NUMBER 2	58	2014	61	38-3

¹ <http://wfw.ncdc.noaa.gov/extremes/records/>

New Local Climate Records¹

July 2014

Coollest High Temperature, Daily

Precipitation, Daily

	New Record	Previous Date	Previous Record	Length of Record		New Record	Previous Year	Previous Record	Period of Record
16 July 2014					3 July 2014				
HALEYVILLE	78	1990	79	111	BILLINGSLEY	1.56	1968	1.51	75
17 July 2014					DEMOPOLIS L&D	1.63	1988	1.40	62
GUNTERSVILLE	80	2004	83	104	8 July 2014				
HALEYVILLE	77	1973	79	111	HUNTSVILLE AIRPORT	1.01	1982	0.75	55
MOULTON 2	78	1984	81	57	MUSCLE SHOALS APRT	2.12	1979	1.77	73
RUSSELLVILLE No. 2	78	1973	80	60	9 July 2014				
18 July 2014					BELLE MINA	1.37	1991	0.67	64
ANNISTON METRO AIRPRT	80	2009	82	111	MOULTON 2	2.54	1969	1.34	57
BANKHEAD LOCK & DAM	82	1990	83	57	TALLAPOOSA WTR PLT	1.60	1996	1.24	36
BELLE MINA	79	1991	83	64	14 July 2014				
BESSEMER 3 WSW	76	2012	78	37	CAHABA PUMP HOUSE	1.22	1992	1.10	32
BIRMINGHAM AIRPORT	76	1947	80	84	WALNUT GROVE	2.00	1948	0.81	73
HALEYVILLE	70	1990	78	111	15 July 2014				
HAMILTON 3 S	81	1994	84	52	HOLT LOCK & DAM	1.73	1994	0.85	33
HUNTSVILLE INT AIRPORT	70	2009	81	55	SAND MT SUBSTATION	1.90	1968	1.84	65
MONTGOMERY AIRPORT	83	1979	86	66	VERNON	1.74	1950	1.65	76
MOULTON 2	77	2007	83	57	WARRIOR LOCK & DAM	1.55	1998	1.25	56
MUSCLE SHOALS AIRPRT	71	2009	80	73	16 July 2014				
RUSSELLVILLE No. 2	78	1961	79	60	ENTERPRISE 2 W	2.93	2004	1.38	48
TUSCALOOSA AIRPORT	75	2012	86	66	18 July 2014				
19 July 2014					HUNTSVILLE AIRPORT	1.60	1963	0.84	55
ALEXANDER CITY	79	2009	84	44	19 July 2014				
BELLE MINA	71	2009	81	64	ADDISON	1.24	2012	0.87	76
CHATOM	78	1997	85	64	ATMORE	0.80	1993	0.78	74
GAINESVILLE	76	2004	87	56	BELLE MINA	2.19	2005	0.78	64
GREENSBORO	75	1923	77	122	HAMILTON 3 S	1.66	1968	1.18	52
GUNTERSVILLE	72	2009	80	104	MOULTON 2	2.45	1989	0.50	57
HAMILTON 3 S	71	2009	85	52	RUSSELLVILLE No. 2	1.95	2002	0.69	60
MOULTON 2	71	2009	79	57	20 July 2014				
MUSCLE SHOALS AIRPRT	78	2009	79	73	COFFEEVILLE L&D	1.31	2006	0.68	31
RUSSELLVILLE No. 2	74	2009	81	60	GENEVA NUMBER 2	1.25	1979	1.24	38
SCOTTSBORO	70	1910	76	122	21 July 2014				
SYLACAUGA 4 NE	79	2012	82	59	JONES BLUFF L&D	1.32	1989	0.37	33
VERNON	79	2009	86	57	23 July 2014				
20 July 2014					MILLERS FERRY L&D	1.69	1996	1.34	33
ENTERPRISE 2 W	80	1990	82	48	25 July 2014				
GAINESVILLE	81	1967	83	56	MELVIN	0.99	1960	0.94	74
HAMILTON 3 S	74	1989	82	52					
RUSSELLVILLE No. 2	77	1990	78	60					
29 July 2014									
HALEYVILLE	77	1951	79	111					
30 July 2014									
GUNTERSVILLE	79	2013	81	104					
HAMILTON 3 S	80	1972	81	52					
RUSSELLVILLE No. 2	78	1972	79	60					
SAND MT SUBSTATION	76	2005	79	64					
WINFIELD 2 SW	78	2007	82	38					

¹ This record differs from long-term data in the AOSC climate database:
http://nsstc.uah.edu/alclimate/climate/daily_climate_and_normals.php

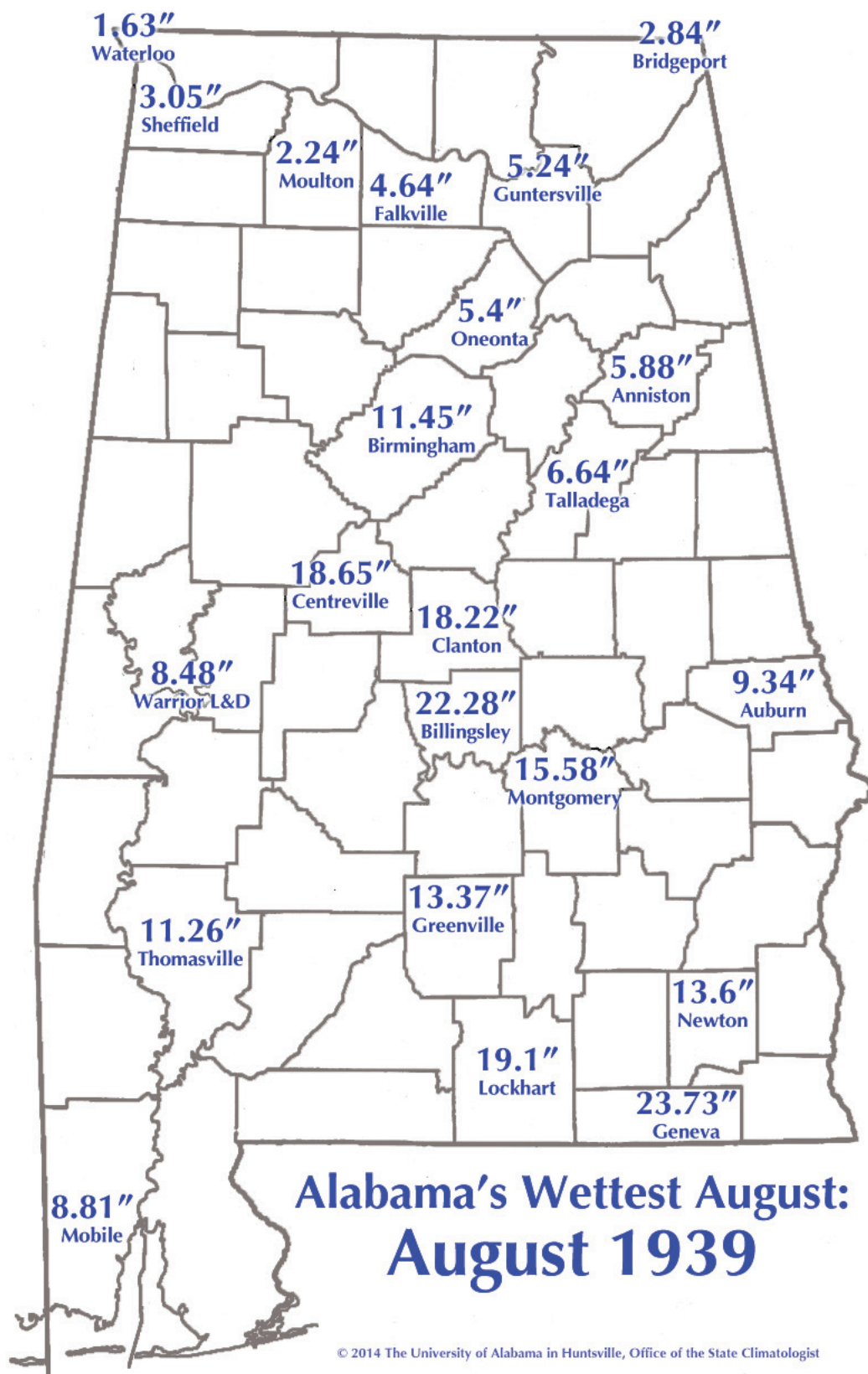
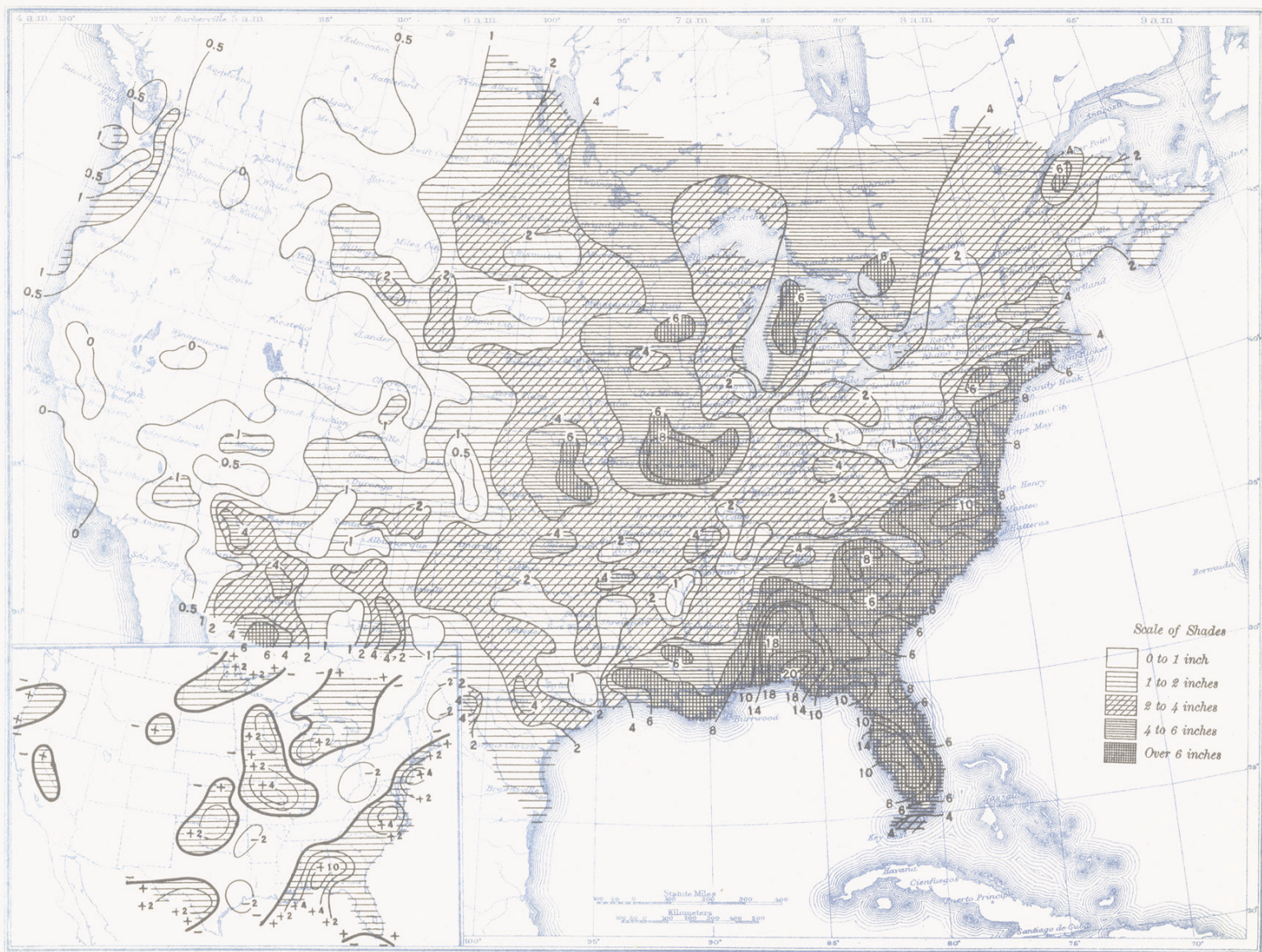


Chart V. Total Precipitation, Inches, August 1939. (Inset) Departure of Precipitation from Normal



August 1939. M. W. R.

LXVII-92



A railroad bridge in Prattville destroyed by flooding, August 1939

Alabama State Climatologist

John R. Christy

Alabama State Climatologist

The University of Alabama

in Huntsville

christy@nsstc.uah.edu

256-961-7763

Contact:

Phillip Gentry

UAHuntsville Communications

The University of Alabama in Huntsville

gentry@nsstc.uah.edu

256.961.7618

Bob Clymer

Assistant State Climatologist

The University of Alabama in Huntsville

bob.clymer@nsstc.uah.edu

256-961-7771

<http://nsstc.uah.edu/alclimatereport>