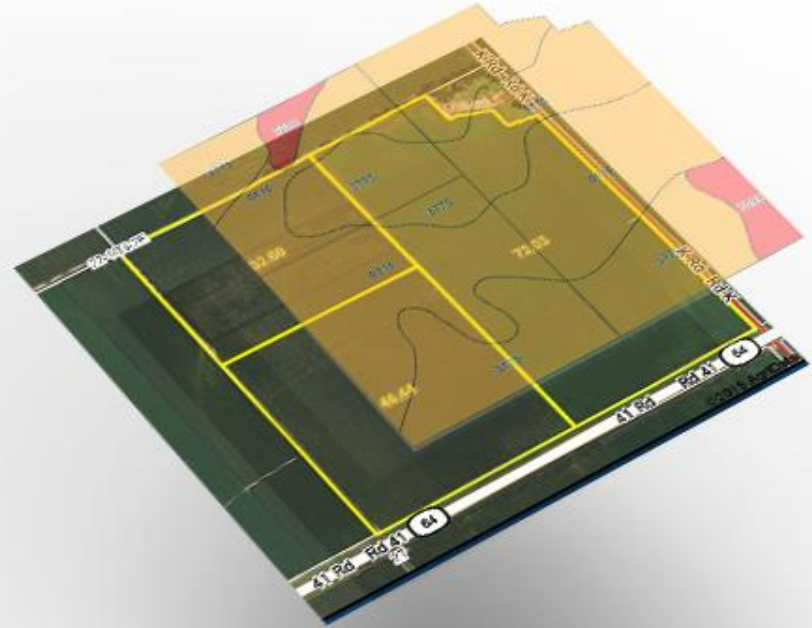




**Spatial Tools, Data, Models, and Metrics  
for Mapping Geographical Economic and  
Environmental Sustainability**



**Dean Sinatra, COO  
National Land Realty**

# Overview

- National Land Realty has created solutions driven for ag investors, funds, large farming operations, etc.
- Pre-qualifying land leveraging GIS (i.e. in-depth soils analysis, ag indexing, slopes, water, topo, and many other layers) overlaid onto our proprietary owner shapefile and tax roll database.
- GIS combined with our proprietary national boundary data, is where NLR stand out for driving intelligence, and then having the "boots on the ground" with land professionals to execute at the ground level.
- This is very powerful, and is driving significant demand for our solutions and services within the agricultural market.

# Sugar Cane

HOME SugarCane

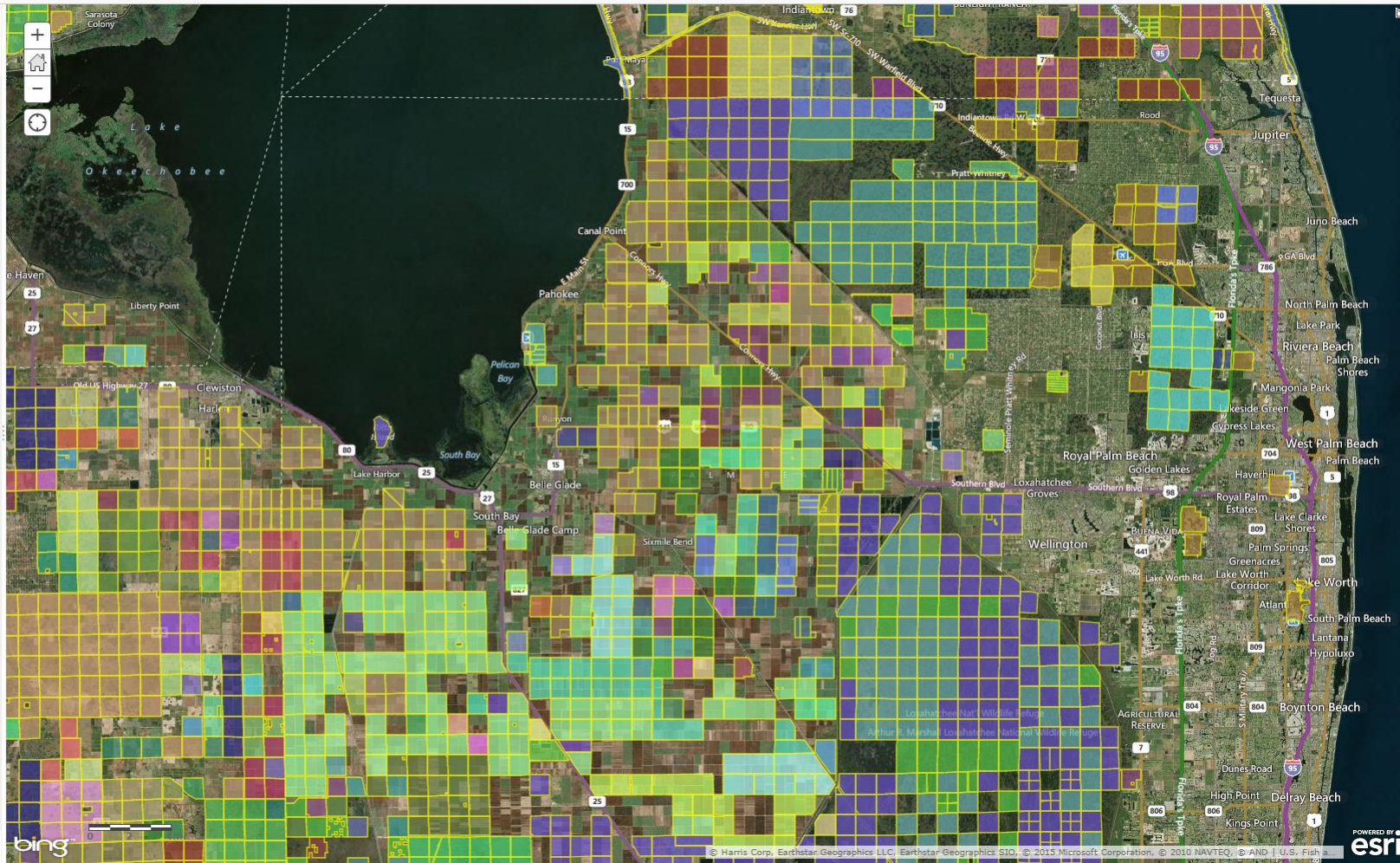
New Map Create Presentation Dean

Details Add Basemap Analysis

Save Share Print Directions Measure Bookmarks Find address or place

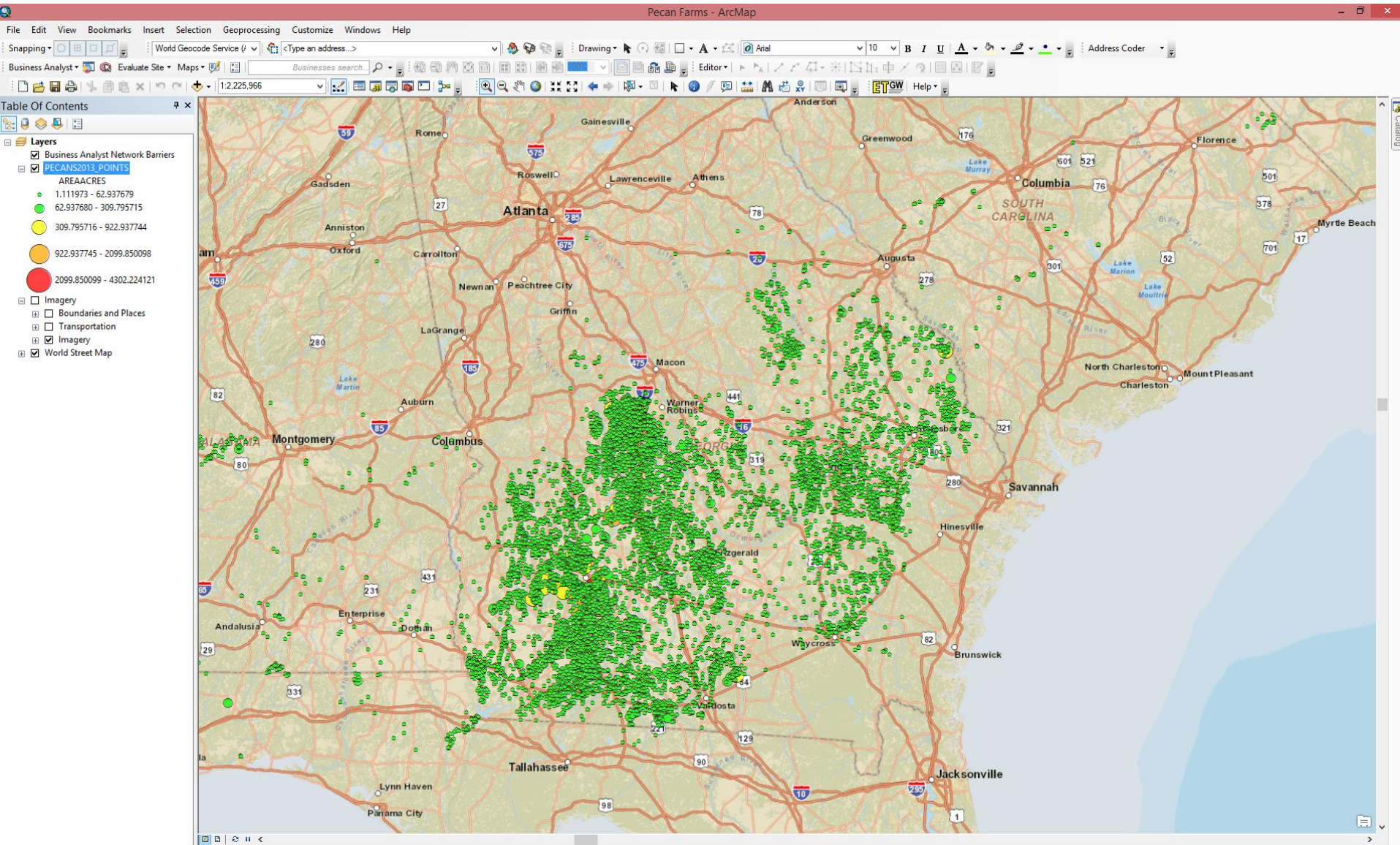
## Legend

- CASTAWAY RANCH LLC
- CAULKINS CITRUS CO LTD
- CDC LAND INVESTMENTS LLC
- CENTRAL CO DR DIST
- CETAM LLC
- CHAMBERS WASTE SYSTEMS OF FLA
- CHAMBERS WASTE SYSTEMS OF FLOR
- CLEMONS OKEECHOBEE LLC
- CLOSTER FARMS INC
- COLLIER BARRON G III
- COLLIER BARRON III
- COLLIER GROVES LIMITED PARTNE
- COLLIER GROVES LTD
- COLLIER LAND HOLDINGS LTD
- CONNECTICUT SUGAR CORP
- CORONA RAMON M & GEORGINA F
- CORRIGAN J PAT FAMILY LMT PART
- CORRIGAN J PAT FAMILY LMT PRT
- CORRIGAN J PAT FAMILY LMT PTR
- COUNTESS JOY LLC
- COW BONE SLOUGH LLLP
- CYPRESS LAND HOLDINGS BELLE GL
- Cracker Trail Groves
- D & B Inc
- D CROSS RANCH INC
- D L PEARCE RANCH INC
- DANIEL OSCAR LEWIS
- DAVIE DAIRY INC



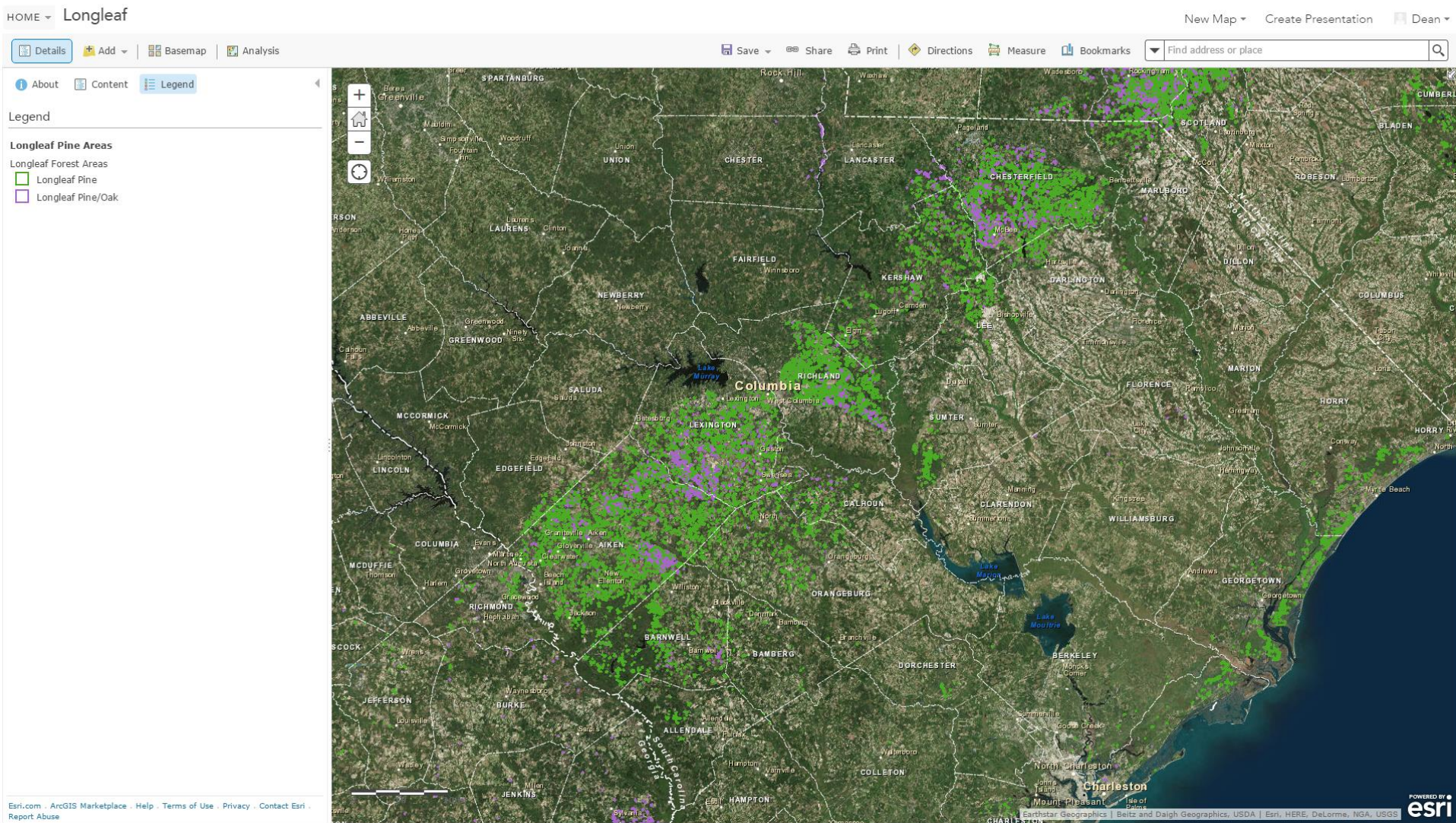


# Pecan





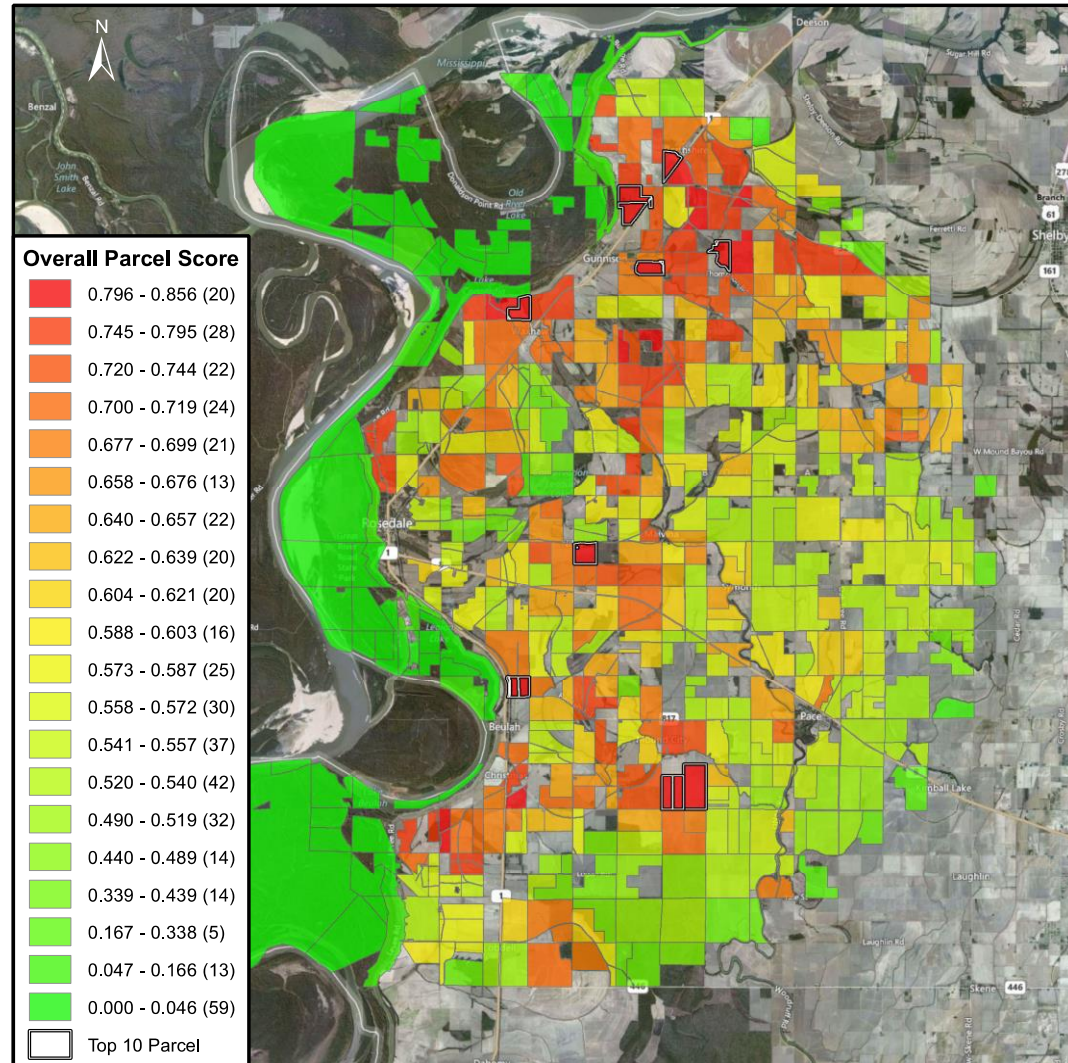
# Longleaf Pine



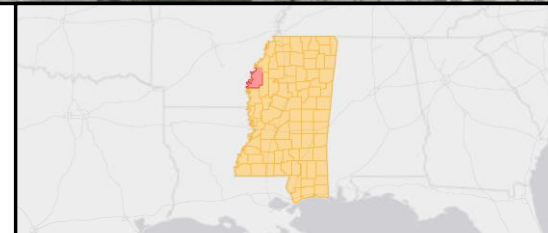


# Bolivar County, MS

## Soil Index Scores for Parcels > 100 Acres



0 1.5 3 6 9 Miles



# SSURGO Soils

10-14-15: Development Preview. Not for Production.

The screenshot shows the NLRSoils web application interface. At the top, there are navigation tabs: "NLRSoils", "Basemaps", and "Analysis". A search bar on the right contains the text "Find address or place". Below the navigation, a red banner displays the text "10-14-15: Development Preview. Not for Production." The main area is divided into three sections: a map on the left, a legend on the right, and a data table at the bottom.

The map displays a topographic background with a semi-transparent soil map overlay. The map includes a toolbar with icons for zooming in (+), zooming out (-), drawing a polygon, drawing a circle, printing, and closing the application. The legend, titled "Legend", lists "Soil Selection Results" with a "Mapunit Symbol" column. The symbols are color-coded and correspond to the map overlay. The data table at the bottom lists soil types and their associated values.

Symbol	Name	Area	Irrigated CC	Non-Irrigated CC	NCCPI Overall	NCCPI Corn/Soybeans	NCCPI Small Grains	Iowa CSR
33E	Steinauer clay l...	3.4		4e	0.57	0.57	0.31	19.0
411D2	Egan silty clay l...	3.4		3e	0.58	0.58	0.40	41.0
401C2	Crofton silt loam...	1.6	3e	3e	0.56	0.56	0.37	58.0
410C2	Moody silty clay...	118.6		3e	0.60	0.60	0.40	65.0
	<b>Summary</b>				<b>0.68</b>	<b>0.68</b>	<b>0.43</b>	<b>66.6</b>

# Capabilities

- National Land Realty can connect any attributes of interest
- The back-end is a database and the GIS is a tool to see that database in a spatial context.
- Our robust GIS platform is driving substantial demand for our solutions and services within the agricultural market.