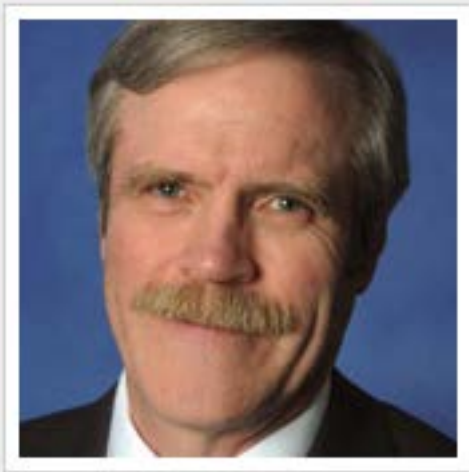


# The Alabama Climate Report

Brought to you by the Office of the Alabama Climatologist

Volume 5, Number 8, May 2015



Dr. John Christy, Alabama State Climatologist

Perhaps the most interesting thing we can say about the weather Alabama saw in May is about the weather we didn't see, which is to say the significant rain that fell just to our west.

We've seen the reports about the significant flooding in Texas and Oklahoma, but somewhat less about the heavy rainfall in Arkansas and Louisiana. It seems the worst of that rain dropped off in Mississippi, with only remnants left to sprinkle over Alabama.

Some of the rainfall amounts from May are staggering. The Weather Service station in Oklahoma City recorded 19.48 inches of rain for the month. Just across the line, Wichita Falls, TX, recorded 17 inches of rain, while south of Dallas the Camp Mabry station in Austin recorded 17.59 inches for the month.

The attached map shows a broad area of Oklahoma, north Texas and Arkansas, where more than 20 inches of rain were recorded by radar and other instruments.

But the worst of that didn't cross the Mississippi River. Shreveport got 10.97 inches and Baton Rouge 11.17, but that fell off to 7.06 inches by the time it got to Jackson, MS, and only 2.16 inches in Meridian, MS. (Although Tupelo got 9.09 inches.)

Mobile got 8 inches of rain in May, which was almost 3 inches more than normal for the month. Decatur reported a couple of flash flooding incidents, but saw only 5.95 inches of rain — about an inch and a half more than normal for the month.

Other May rainfall across the state shows how spotty things were this far east:

Tuscaloosa	2.32" (- 1.66")
Anniston	2.53" (- 1.73")
Birmingham	2.56" (- 2.43")
Auburn	2.77" (M)
Troy	3.09" (- 0.59")
Muscle Shoals	4.21" (- 0.91")
Montgomery	4.34" (+0.80")
Huntsville	5.08" (- 0.03")
Gadsden	5.42" (M)
Dothan	5.42" (+ 1.86)

- John Christy

**U.S. Drought Monitor**  
**Alabama**



**June 2, 2015**  
(Released Thursday, Jun. 4, 2015)  
Valid 7 a.m. EST

Drought Conditions (Percent Area)

	None	D0-D4	D1-D4	D2-D4	D3-D4	D4
Current	96.74	3.26	0.00	0.00	0.00	0.00
Last Week 6/25/2015	76.69	23.31	0.00	0.00	0.00	0.00
3 Months Ago 3/2/2015	44.39	55.61	14.67	0.00	0.00	0.00
Start of Calendar Year 12/30/2014	62.49	37.51	3.77	0.00	0.00	0.00
Start of Water Year 9/30/2014	17.21	82.79	26.99	1.25	0.00	0.00
One Year Ago 6/2/2014	87.14	12.86	0.65	0.00	0.00	0.00

Intensity:



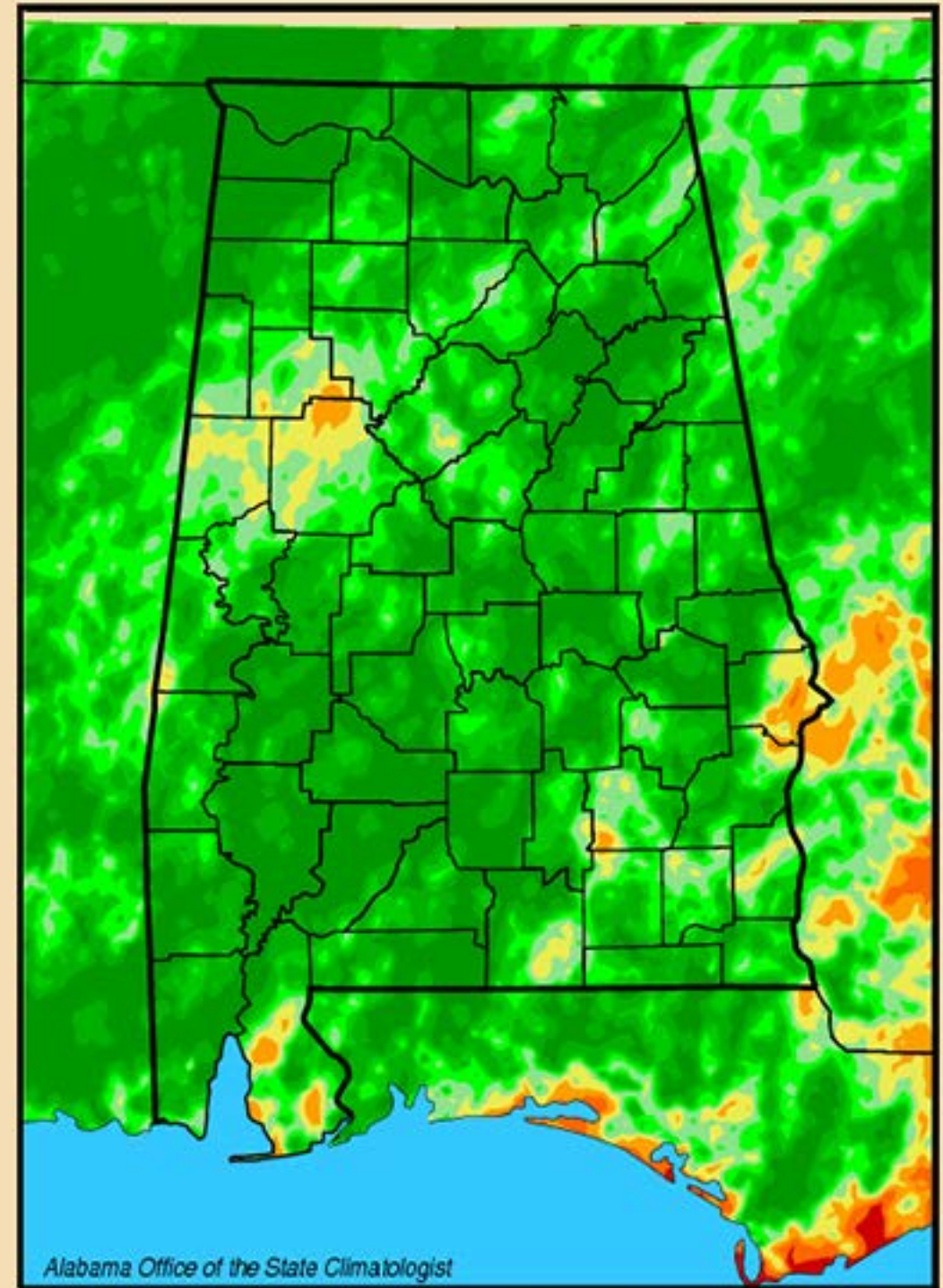
The Drought Monitor focuses on broad-scale conditions. Local conditions may vary. See accompanying text summary for forecast statements.

Author:  
David Miskus  
NOAA/NWS/NCEP/CPC

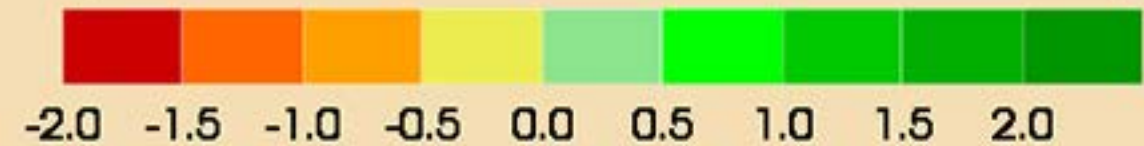


<http://droughtmonitor.unl.edu/>

**Lawn-and-Garden Moisture Index**  
**for June 3, 2015**



Alabama Office of the State Climatologist



**Alabama Monthly Climate Summaries**  
May 2014

Station	Station Began	May Mean May Norm	May Hi Temp Record Hi	May Low Temp Record Low	Total Precip. Normal Prec.	Wettest May Driest May	Heaviest Day Record Day
Anniston	2/1903	72.1°	89° 5/11/15	45° 5/2/15	2.53"	8.59" 1983	1.35" 5/27-28/15
		69.4°	98° 5/16/62	34° 5/13/60	4.16"	1.81" 1977	3.32" 5/19/83
Auburn	1/1893	68.8°	88° 5/14/15	48°# 5/9/15	2.77"	10.33" 1915	1.09" 5/26/15
		71.7°	98° 5/27/1911	35° 5/13/60	3.75"	0.36" 1914	4.53" 5/7/15
Birmingham	1/1930	72.4°	90° 5/10/15	47° 5/2/15	2.56"	9.57" 1983	1.04" 5/27-28/15
		70.4°	99° 5/28/62	36° 5/4/71	4.83"	0.88" 2000	3.85" 5/6/67
Brewton	4/1977	72.7°	90.9° 5/20/15	44.9° 5/2/15	5.69"	15.97" 1991	1.66" 5/20/15
		70.9°	100° 5/26/33	34° 5/4/71	5.56"	0.85" 1988	5.00"+ 5/10/95
Calera	9/1900	72.8°	90° 5/10/15	59° 5/2/15	4.24"	9.99" 2003	1.99" 5/27-28/15
		69.5°	98° 5/21/62	31° 5/13/60	4.02"	0.34" 1977	3.65" 5/12/12
Clanton	2/1893	70.3°	88.5° 5/10/15	44.3° 5/2/15	6.39"	13.26" 1991	2.63" 5/27/15
		70.5°	99°+ 5/31/45	33° 5/13/60	4.36"	0.57" 1977	3.75" 5/20/46
Courtland		69.4°	88.6° 5/10/15	44.4° 5/2/15	4.25"	M	1.57" 5/27/15
		M	M	M	M	M	M
Cullman	7/1907	68.1°	86.9° 5/10/15	41.3° 5/2/15	3.71"	M	1.12" 5/27/15
		M	M	M	M	M	M
Decatur	2/1880	69.7°	87° 5/10/15	42° 5/1/15	5.95"	8.44" 1907	1.52" 5/27-28/15
		70.2°	100° 3/31/14	34° 5/2/1909	3.87"	0.15" 1941	3.50" 5/29/1912
Dothan	2/1902	75.8°	94° 5/10/15	49° 5/2/15	5.42"	8.73" 1947	1.71" 5/25-28/15
		74.6°	104° 5/30/37	44° 5/5/54	3.37"	0.45" 1962	4.10" 5/12/1903
Fairhope	8/1917	73.6°	89° 5/21/15	45.5° 5/2/15	2.58"	13.75" 1991	0.85" 5/28/15
		73.3°	98° 5/27/53	43° 5/13/60	5.60"	0.31" 1988	6.54" 5/20/81
Gadsden	7/1893	64.5°	86° 5/19/15	43°# 5/9/15	5.42"	7.75" 1973	2.34" 5/27/15
		68.4°	99° 5/24/70	33° 5/13/60	4.59"	1.43" 2000	3.22" 5/22/67
Gainesville Lock	6/1948	70.7°	89.3° 5/10/15	45.4° 5/2/15	2.84"	12.17" 1978	0.92" 5/27/15
		70°	97° 5/31/77	38° 5/5/86	4.43"	0.12" 2000	5.12" 5/1/78
Greensboro	2/1890	70.8°	89.3° 5/10/15	42.8° 5/2/15	4.53"	10.30" 1991	1.59" 5/28/15
		71.9°	98°+ 5/24/96	37°+ 5/10/66	4.47"	0.81" 1992	4.10" 5/18/30
Highland Home	3/1892	72.0°	88.3° 5/10/15	52.2° 5/2/15	3.09"	9.61" 1976	0.88" 5/28/15
		70.7°	98° 5/22/62	40° 5/13/81	4.05"	0.44" 2000	4.46" 5/4/78
Huntsville	1/1959	72.8°	92° 5/10/15	45° 5/2/15	5.08"	11.88" 1983	2.15" 5/27/15
		69.2°	96° 5/20/1960	36° 5/3/71	5.04"	0.78" 2007	4.64" 5/16/80

**Alabama Monthly Climate Summaries**  
May 2014

Station	Station Began	May Mean May Norm	May Hi Temp Record Hi	May Low Temp Record Lo	Total Precip. Normal Prec.	Wettest May Driest May	Heaviest Day Record Day
Mobile	3/1900	75.1°	90° 5/20-21/15	47° 5/2/15	8.05"	15.08" 1980	3.64" 5/16/15
		73.5°	100°+ 5/27/53	43° 5/13/60	6.10"	0.36" 1996	7.96" 5/5/81
Montgomery	6/1948	75.0°	93° 5/10/15	47° 5/2/15	4.34"	12.01" 1978	1.35" 5/25-26/15
		72.3°	98° 5/27/53	40° 5/4/71	4.14"	0.68" 1995	5.23" 5/9/78
Muscle Shoals	12/1940	70.5°	90° 5/10/15	44° 5/2/15	4.21"	11.86" 1983	1.49" 5/24-25/15
		68.8°	99° 5/29/41	36°+ 5/4/71	5.30"	1.18" 1987	3.32" 5/17/80
Russellville	9/1953	67.7°	87.6° 5/10/15	39.3° 5/1/15	7.64"	18.37" 1991	2.70" 5/27/15
		66.3°	95°+ 5/27/00	31°+ 5/4/76	5.87"	0.62" 1987	6.10" 5/8/84
Scottsboro	10/1891	68.6°	88.3° 5/10/15	39.6° 5/1/15	4.88"	9.81" 1983	1.57" 5/27/15
		68.1°	97° 5/29/41	32° 5/4/71	5.02"	1.27" 1992	5.00" 5/3/97
Selma	1/1895	71.5°	91.8° 5/10/15	42.2° 5/2/15	5.20"	9.01" 1991	1.95" 5/28/15
		71.8°	100° 5/27/53	40° 5/7/44	3.71"	0.10" 1977	3.40" 5/4/57
Talladega	2/1888	70.8°	89.1° 5/10/15	43.2° 5/2/15	5.19"	11.72" 1983	3.01" 5/27/15
		70.0°	96°+ 5/25/96	32° 5/4/71	4.71"	1.55" 1995	5.22" 5/19/83
Thomasville	9/1891	70.8°	90° 5/10/15	42.3° 5/2/15	6.53"	12.04" 1980	0.86" 5/28/15
		72.1°	99° 5/31/37	36° 5/13/60	4.75"	0.64" 1988	5.07" 5/1/40
Troy	6/1908	73.5°	92° 5/14/15	44° 5/2/15	3.09"	9.57" 1976	0.97" 5/28/15
		71.2°	99° 5/30/37	38° 5/4/71	3.73"	0.14" 1977	4.65" 5/6/53
Tuscaloosa	6/1948	72.9°	91° 5/10/15	46° 5/2/15	2.32"	11.13" 1976	1.01" 5/27-28/15
		71.9°	98° 5/31/51	36° 5/4/76	4.55"	0.44" 2000	3.91" 5/1/58
Valley Head	1/1893	67.6°	86.1° 5/10/15	38° 5/1/15	2.87"	8.63" 1978	0.73" 5/16/15
		66.4°	94°+ 5/29/62	29°+ 5/4/76	4.70"	1.08" 1992	4.19" 5/3/97
Statewide May 2015		71.30°	94° Dothan	31.1° Russellville	4.54"	18.37" Russellville	7.28" Mobile
May Norm		70.52°	104 Dothan	29° Valley Head	4.59"	0.10" Selma	9.60" Brewton

M: Data is missing or not available

\*New Record

#This data is missing this month due to an instrument malfunction

^ This record differs from long-term data in the AOSC climate database:  
[http://nsstc.uah.edu/alclimate/climate/daily\\_climate\\_and\\_normals.php](http://nsstc.uah.edu/alclimate/climate/daily_climate_and_normals.php)

# New Local Climate Records<sup>1</sup>

May 2015

## Precipitation, Daily

	New Record	Previous Year	Previous Record	Period of Record
<b>15 May 2015</b>				
CHATOM	1.50	2008-05-15	1.10	65
MOBILE DTWN AIRPORT	1.58	1967-05-15	1.14	66
<b>16 May 2015</b>				
CLAIBORNE L&D	1.70	2008-05-16	0.85	62
MOBILE REG. AIRPORT	3.63	1969-05-16	3.08	67
WALLACE 2 E	1.16	1983-05-16	1.15	74
<b>17 May 2015</b>				
ATMORE	1.06	2008-05-17	0.97	75
TALLAPOOSA WTR PLT	1.95	1983-05-17	1.28	37
<b>19 May 2015</b>				
ADDISON	1.19	2014-05-19	1.03	77
<b>21 May 2015</b>				
GENEVA NUMBER 2	0.55	1989-05-21	0.40	39
<b>24 May 2015</b>				
BAY MINETTE	4.00	1965-05-24	3.45	101
BESSEMER 3 WSW	1.22	1997-05-24	0.82	38
<b>25 May 2015</b>				
MONTGOMERY AIRPT	0.90	1980-05-25	0.65	67
<b>26 May 2015</b>				
JORDAN DAM	1.03	1971-05-26	0.65	78
LAY DAM	1.62	1982-05-26	1.47	78
MITCHELL DAM	1.89	1963-05-26	1.05	78
MOBILE DNTWN AIRPRT	1.13	1951-05-26	0.54	66
PINE APPLE	0.80	1981-05-26	0.46	47
RUSSELLVILLE No. 2	3.00	1991-05-26	2.90	61
WALLACE 2 E	1.04	1991-05-26	0.87	74
WETUMPKA	2.10	1963-05-26	0.85	121
<b>27 May 2015</b>				
ATHENS	1.65	1960-05-27	1.49	74
HUNTSVILLE INTL AIRPT	2.15	1973-05-27	1.50	56
<b>28 May 2015</b>				
BELLE MINA	1.70	2008-05-28	1.42	65
GREENSBORO	2.03	1896-05-28	1.68	123
OPELIKA	2.40	1996-05-28	1.05	58
RUSSELLVILLE No. 2	4.00	2008-05-28	3.13	61
WARRIOR L&D	1.65	1971-05-28	1.62	57
<b>29 May 2015</b>				
ALEXANDER CITY	2.41	2001-05-29	1.50	45
JACKSONVILLE	3.36	2000-05-29	1.32	67
MOULTON 2	1.37	1998-05-29	1.16	58
OPELIKA	2.60	2010-05-29	2.00	58

## Maximum High Temperature, Daily

	New Record	Previous Hottest Day	Previous Record	Period of Record
<b>07 May 2015</b>				
GENEVA NUMBER 2	92	2007-05-07	91	39
<b>09 May 2015</b>				
BANKHEAD L&D	92	2004-05-09	90	58
<b>10 May 2015</b>				
CLAYTON	92	2002-05-10	91	59
HEFLIN	88	2011-05-10	87	59
HUNTSVILLE AIRPORT	92	1962-05-10	91	56
MONTGOMERY AIRPT	93	1955-05-10	92	67
<b>11 May 2015</b>				
GAINESVILLE	91	2011-05-11	90	57
RUSSELLVILLE No. 2	91	2011-05-11	90	61
<b>12 May 2015</b>				
GENEVA No. 2	96	2002-05-12	95	39
<b>15 May 2015</b>				
ENTERPRISE 2 W	94	1998-05-15	93	49
<b>20 May 2015</b>				
GENEVA No. 2	97	1998-05-20	93	39
<b>22 May 2015</b>				
DAUPHIN ISLAND No. 2	89	2004-05-22	87	39

## Minimum Low Temperature, Daily

	New Record	Previous Year	Previous Record	Period of Record
<b>01 May 2015</b>				
CHATOM	41	2008-05-01	42	65
<b>02 May 2015</b>				
CHATOM	41	1963-05-02	43	65
MOBILE REG. AIRPORT	47	2005-05-02	50	67
WETUMPKA	39	2005-05-02	42	118
<b>03 May 2015</b>				
WETUMPKA	39	1909-05-03	40	118
<b>14 May 2015</b>				
DAUPHIN ISLAND No. 2	56	2002-05-14	59	39
<b>22 May 2015</b>				
WETUMPKA	46	1954-05-22	47	118

<sup>1</sup> <http://lwf.ncdc.noaa.gov/extremes/records/>

# Community Collaborative Rain, Hail & Snow Network (CoCoRAHS)

May 2015

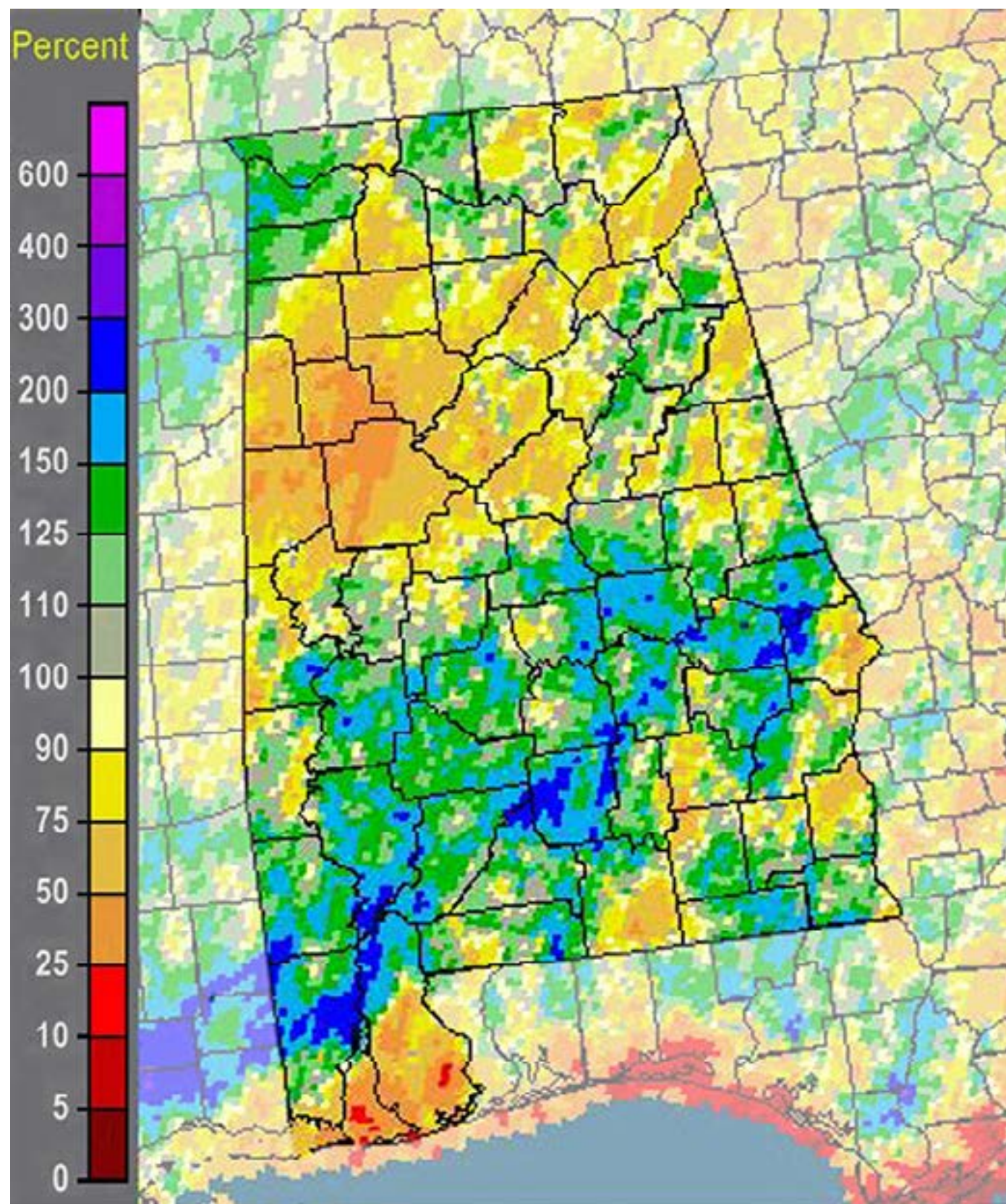
	Ave. Total Precip.	# Stations
Autauga	5.40	2
Baldwin	3.17	20
Barbour	n.a.	0
Bibb	4.51	1
Blount	3.81	9
Bullock	n.a.	0
Butler	n.a.	0
Calhoun	5.34	2
Chambers	n.a.	0
Cherokee	4.76	1
Chilton	0.70	1
Choctaw	2.60	1
Clarke	5.21	1
Clay	n.a.	0
Cleburne	n.a.	0
Coffee	5.18	1
Colbert	6.55	8
Conecuh	n.a.	0
Coosa	4.66	2
Covington	n.a.	0
Crenshaw	n.a.	0
Cullman	3.15	5
Dale	6.36	1
Dallas	7.01	1
DeKalb	3.53	3
Elmore	5.20	7
Escambia	5.95	1
Etowah	4.86	1
Fayette	4.47	1
Franklin	n.a.	0
Geneva	n.a.	0
Greene	n.a.	0
Hale	n.a.	0
Henry	n.a.	0

	Ave. Total Precip.	# Stations
Houston	5.87	1
Jackson	4.51	7
Jefferson	2.74	15
Lamar	3.29	1
Lauderdale	5.68	9
Lawrence	5.44	2
Lee	3.19	4
Limestone	5.60	10
Lowndes	n.a.	0
Macon	n.a.	0
Madison	4.15	49
Marengo	n.a.	0
Marion	3.23	2
Marshall	3.93	11
Mobile	7.14	14
Monroe	7.49	2
Montgomery	4.45	3
Morgan	6.10	7
Perry	n.a.	0
Pickens	3.53	1
Pike	n.a.	0
Randolph	5.58	1
Russell	3.01	2
St. Clair	3.60	4
Shelby	3.36	18
Sumter	n.a.	0
Talladega	4.98	6
Tallapoosa	3.80	4
Tuscaloosa	2.34	4
Walker	0.25	1
Washington	5.37	1
Wilcox	4.51	2
Winston	4.78	2

## Normal May Precipitation\*

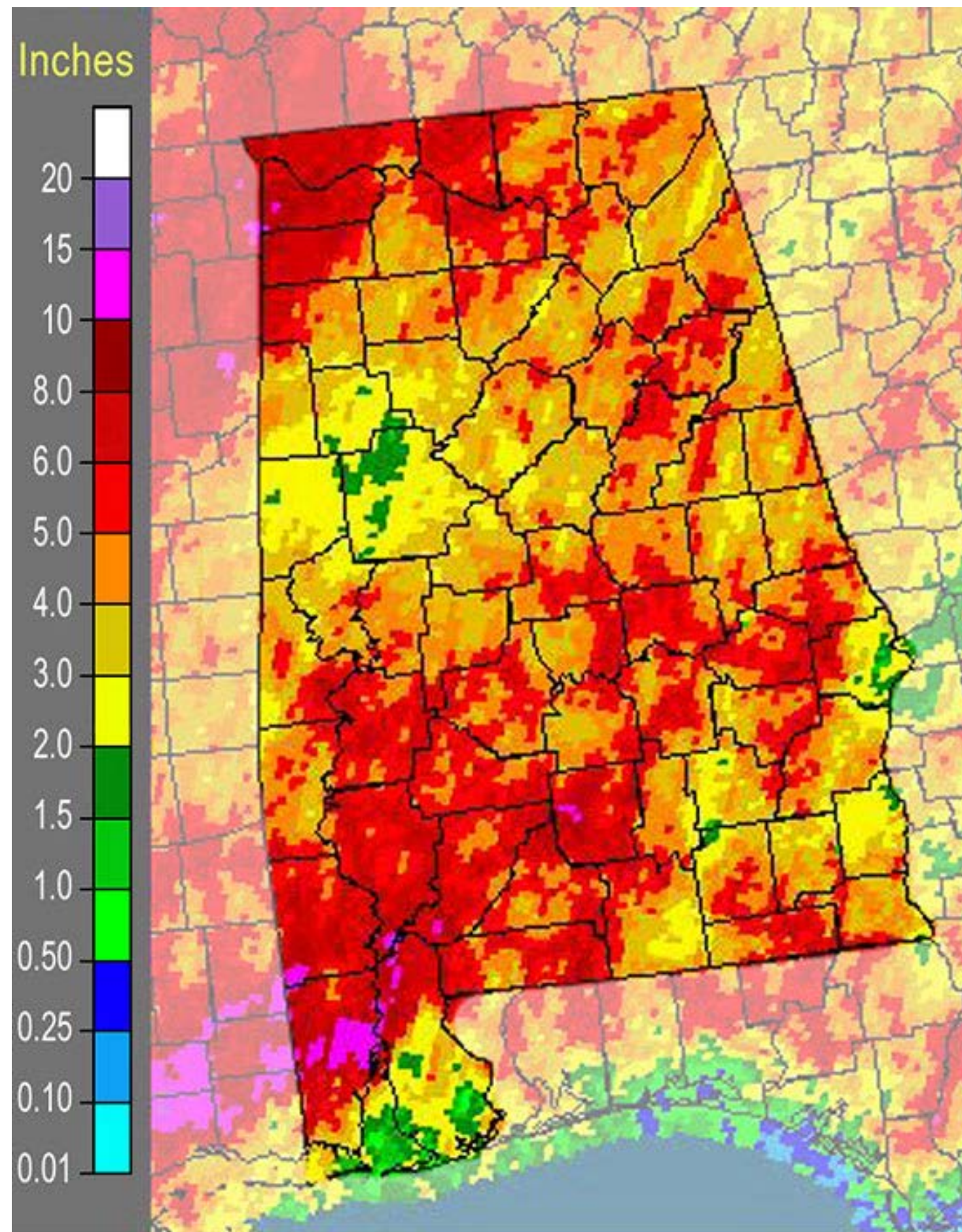
Abbeville	4.03"
Alberta	4.25"
Alex City	4.42"
Aliceville	3.90"
Andalusia	4.69"
Ashland	4.44"
Athens	4.12"
Bay Minette	5.48"
Bessemer	5.16"
Billingsley	3.70"
Centreville WSMO	4.56"
Chatom	5.19"
Claiborne L&D	4.33"
Clayton	4.00"
Dauphin Isl.	5.51"
Elba	4.27"
Eufaula WR	4.04"
Evergreen	4.69"
Fayette	4.42"
Geneva 2	4.52"
Greenville	4.12"
Haleyville	4.97"
Hamilton 3S	5.92"
Heflin	4.87"
Hurtsboro	4.53"
Jasper	5.14"
Lafayette	4.29"
Livingston	4.18"
Melvin	4.52"
Milstead	3.93"
Moulton	4.97"
Oneonta	4.44"
Perryville	3.72"
Plantersville	4.00"
Rock Mills	3.95"
Rockford	4.32"
Sylacauga	3.80"
Union Springs	3.83"
Uniontown	3.83"
Vernon	4.94"
Warrior L&D	4.14"
Wetumpka	3.63"

\*Southeast Regional Climate Center  
[www.serrc.com](http://www.serrc.com)



*May 2015 NWS percentage of normal precipitation*

(NOAA) water.weather.gov



*May 2015 NWS multi-sensor precipitation estimate*

(NOAA) water.weather.gov

County	Gauge	Location & Water Body	Jan 2015	Feb 2015	March 2015	April 2015	May 2015	June 2015	July 2015	Aug 2015	Sept 2015	Oct 2015	Nov 2015	Dec 2015	YTD 2015
Barbour	Star Hill	Al Hwy. 239 S	2.76	4.28	2.08	6.28	8.12								23.52
	Star Hill		2.64	5.20	4.84	10.60	3.52								26.80
	Texasville	East Fork	2.72	4.24	1.08	8.40	4.76								21.20
	Texasville	Choctawhatchee	3.40	5.00	4.40	14.80	3.08								30.68
Coffee	Big Creek	Big Creek	3.36	4.16	2.08	8.84	3.04								21.48
	Big Creek	Hwy. 87 North	3.24	5.60	4.48	13.68	5.44								32.44
	Elba	Pea River	2.92	3.88	2.68	5.80	4.76								20.04
	Elba	Hwy. 84 East	2.92	5.20	4.16	13.24	4.84								30.36
	Enterprise	137 Lester Dr.	3.08	4.36	1.56	10.20	3.80								23.00
	Enterprise		3.24	5.48	6.60	16.52	3.76								35.60
	Folsom Bridge	Pea River	2.68	4.12	2.48	10.16	4.44								23.88
	Folsom Bridge	Hwy. 167 North	3.08	5.48	4.32	15.16	6.76								34.80
Lowry Mill	Whitewater		3.48	3.92	2.32	5.64	3.80								19.16
	Creek		3.16	6.04	4.28	13.84	4.36								31.68
	New Brockton	Farm Center	2.72	4.60	2.36	6.64	4.24								20.56
	New Brockton	Hwy. 84	3.00	4.96	5.16	16.20	4.72								34.04
Covington	Yellow River	Yellow River	3.20	3.80	2.84	9.06	1.92								20.82
	Yellow River	Hwy. 55	3.16	5.16	7.04	15.88	4.60								35.84
	Yellow River*	Yellow River	n/a	3.93	2.49	7.32	3.48								17.22
	Yellow River	Hwy. 84	n/a	n/a	n/a	n/a	n/a								n/a
Dale	Arlton	Pea River	3.04	4.32	2.52	7.32	3.52								20.72
	Arlton	US Hwy. 231 North	3.36	5.48	4.12	14.00	2.88								29.84
	Daleville	Claybank Creek	3.60	4.52	1.60	9.68	4.64								24.04
	Daleville	Hwy. 84 West	2.60	6.00	6.44	16.08	2.52								33.64
	Newton	Choctawhatchee	2.96	3.80	1.64	7.04	4.68								20.12
	Newton	River, Hwy. 123 N	2.44	5.32	5.48	14.16	5.76								33.16
	Ozark	Little Claybank Cr.	3.04	4.44	1.04	10.60	4.36								23.48
	Ozark	US Hwy. 231	2.84	5.48	4.56	15.04	3.92								31.84
	Skipperville	West Fork	2.88	5.16	1.56	7.04	2.32								18.96
	Skipperville	Choctawhatchee	2.80	5.68	4.44	12.28	3.28								28.48



**Alabama Climate Report**  
**Climate Extremes**  
 Hottest - Coldest  
 Statewide Average Temperature  
[http://www.sercc.com/climateinfo/monthly\\_seasonal.html](http://www.sercc.com/climateinfo/monthly_seasonal.html)  
 Record begins in 1895

**Alabama Climate Report**  
**Climate Extremes**  
 Wettest - Driest  
 Statewide Average Precipitation  
[http://www.sercc.com/climateinfo/monthly\\_seasonal.html](http://www.sercc.com/climateinfo/monthly_seasonal.html)  
 Record begins in 1895

### Year-to-date

- Hottest
1. 1921 65.7°
  2. 1927 65.6°
  3. 1911 65.3°
  4. 1922 65.2°
  5. 1933 65.1°
  - 1998 65.1°
  7. 1925 65.0°
  8. 1990 64.9°
  - 2012 64.9°
  10. 1938 64.5°
  11. 2007 64.4°
  12. 1896 64.3°
- January through Dec. 2014 **24. 2014 62.2°**
- Coldest
3. 1983 61.2°
  2. 1968 61.0°
  1. 1976 60.7°

### Year to Date

- Wettest
1. 1929 75.08"
  2. 1975 74.77"
  3. 2009 73.78"
  4. 1983 70.36"
  5. 1961 69.83"
  6. 1979 67.92"
  7. 1948 67.64"
  8. 1973 67.17"
  9. 1912 66.56"
  10. 1964 66.50"
  11. 1919 65.97"
  12. 1900 65.85"
- January through Dec. 2014 **56. 2014 55.95"**
- AVG 55.10"
12. 1941 46.19"
  11. 1910 46.19"
  11. 1896 46.16"
  10. 1981 45.80"
  9. 1930 45.80"
  8. 1921 45.44"
  7. 1914 45.33"
  6. 1968 45.22"
  5. 1931 43.84"
  4. 2000 42.50"
  3. 1904 40.60"
  2. 2007 37.87"
  1. 1954 35.39"

County	Gauge	Location & Water Body	Jan 2015	Feb 2015	March 2015	April 2015	May 2015	June 2015	July 2015	Aug 2015	Sept 2015	Oct 2015	Nov 2015	Dec 2015	YTD 2015
Geneva	Geneva	Choctawhatchee	2.92	3.08	2.32	8.44	6.68								23.44
	Geneva	River, Hwy. 52 E	3.68	6.28	7.52	14.16	4.88								36.52
	Sellersville	Double Bridges	4.24	3.64	3.64	13.40	5.80								30.72
	Sellersville	Creek, Cty. Rd. 40	2.48	5.16	6.52	14.12	5.52								33.80
Henry	East Choctaw	E. Choctawhatchee	2.16	3.80	2.40	8.56	2.60								19.52
	East Choctaw	Hwy. 27 East	2.80	5.24	4.72	12.92	5.40								31.08
Houston	Dothan	Little Choctaw	3.12	2.84	3.32	6.16	5.80								21.24
	Dothan	Brannon Stand Rd.	3.24	4.84	5.52	11.36	2.92								27.88
Pike	Troy	400 Pell Ave.	2.68	4.60	2.16	6.84	4.12								20.40
	Troy		2.96	5.04	4.76	9.08	5.32								27.16
	Shiloh	Hwy. 130 West	2.88	4.32	2.04	7.56	6.44								23.24
	Shiloh		4.08	4.88	4.32	11.00	2.84								27.12
Average monthly rainfall of all gauges			Jan 2015	Feb 2015	March 2015	April 2015	May 2015	June 2015	July 2015	Aug 2015	Sept 2015	Oct 2015	Nov 2015	Dec 2015	YTD 2015
			2015	3.02	4.09	2.20	8.14	4.44							21.89
			2014	3.06	5.38	5.18	13.71	4.32							31.65

\*New gauge at Yellow River on Hwy. 84 began reporting month of February, 2015.

## Alabama State Climatologist

John R. Christy  
Alabama State Climatologist  
The University of Alabama  
in Huntsville  
christy@nsstc.uah.edu  
256-961-7763

## Contact:

Phillip Gentry  
UAHuntsville Communications  
The University of Alabama in Huntsville  
gentry@nsstc.uah.edu  
256.961.7618

Bob Clymer  
Assistant State Climatologist  
The University of Alabama in Huntsville  
bob.clymer@nsstc.uah.edu  
256-961-7771

<http://nsstc.uah.edu/alclimatereport>