

# The Alabama Climate Report

Brought to you by the Office of the Alabama Climatologist

Volume 5, Number 9, June 2015



Dr. John Christy, Alabama State Climatologist

It isn't that the weather in June was normal, but it was. Like the leap second that was added to the official clocks in June, it happened but with a couple of exceptions it wasn't all that much to talk about.

First, the exceptions. It was generally a bit warmer and drier than normal across Alabama in June. Parts of northwest Alabama were much drier: Russellville recorded only 0.22 inches of rain for the month of June, a new record for the month.

That level of drought, however, was found only in one region. Other places saw some rain. Decatur had its wettest June day on record on June 1 when 3.26 inches of rain fell in one day. And the CoCoRAHs volunteer in Chilton County reported 10.1 inches of rain for the month.

But those were the exceptions. Instead of fretting over averages, let's look back just a few years to July 2005. Friday, July 10, is the tenth anniversary of Hurricane Dennis arriving in Alabama, and this year is the tenth anniversary of the most active and most destructive Atlantic hurricane season on record.

Dennis was a killer before it arrived near Pensacola on July 10. It hit Cuba, twice, and Haiti as a strong Category 4 (almost 5) hurricane, leaving behind at least 32 fatalities and millions of dollars in damage. It came ashore on the Florida panhandle as a Category 3 hurricane, with winds of about 120 mph. (The panhandle and south Alabama were at that time still recovering from Hurricane Ivan the previous September.)

While U.S. damage estimates from Dennis were between one billion and two and a half billion dollars, making it one of the 15 most costly storms of all time, damage in Alabama was moderate. Dennis had dropped from a Category 3 hurricane to a minimal Category 1 by the time it crossed the Florida-Alabama line. About 500,000 people were evacuated and 280,000 lost power.

Rainfall from the storm generally averaged between two and four inches, although there were isolated reports of as much as 12.8". The National Weather Service monthly precipitation estimates for July 2005 include an area in western Mobile County with rainfall over 20 inches.

Dennis was a rare powerful storm for July, with peak winds of 150 mph, setting a new record for the most powerful Atlantic July hurricane. It was a record that would last for all of a week, until Hurricane Emily arrived on the scene.

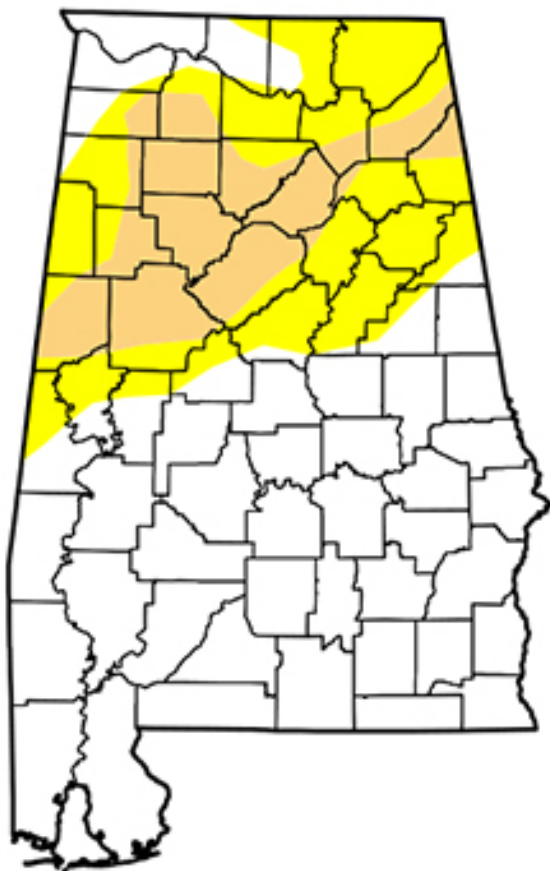
Of course, there was much worse on its way in 2005. Emily, a category 5 hurricane, was followed later in the year by category 5 hurricanes Katrina, Rita and Wilma, with category 3 hurricanes Maria and Beta thrown in for good measure. Official estimates put the death toll from that hurricane season at 3,913 and damages at a record \$159 billion.

And those were the last major hurricanes the U.S. has seen. The last major (category 3 or stronger) hurricane to hit the U.S. was Hurricane Wilma in October 2005. This is already the longest major hurricane “drought” on record for the U.S. The odds are against that drought continuing much longer, although we have an El Niño Pacific Ocean warming event going this summer. Major hurricanes are less common during El Niño years.

Major hurricane or not, the damage that can be caused by any run-of-the-mill tropical system — such as the flooding caused by tropical storm Bill in June — remind us that right now is the best time to check our severe weather preparations. If you aren’t sure where to start, you can find some useful information on the web at ready.gov.- John Christy

## U.S. Drought Monitor Alabama

**June 30, 2015**  
(Released Thursday, Jul. 2, 2015)  
Valid 8 a.m. EDT



Drought Conditions (Percent Area)

	None	D0-D4	D1-D4	D2-D4	D3-D4	D4
<b>Current</b>	63.79	36.21	14.35	0.00	0.00	0.00
<b>Last Week</b> 0230015	67.87	32.13	2.28	0.00	0.00	0.00
<b>3 Months Ago</b> 3310015	44.82	55.18	13.79	0.00	0.00	0.00
<b>Start of Calendar Year</b> 12302014	62.49	37.51	3.77	0.00	0.00	0.00
<b>Start of Water Year</b> 03302014	17.21	82.79	26.99	1.25	0.00	0.00
<b>One Year Ago</b> 7152014	99.27	0.73	0.00	0.00	0.00	0.00

**Intensity:**

- D0 Abnormally Dry
- D1 Moderate Drought
- D2 Severe Drought
- D3 Extreme Drought
- D4 Exceptional Drought

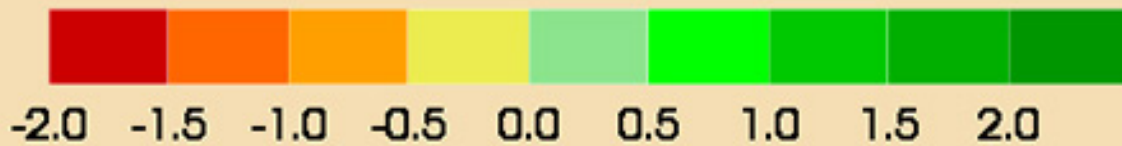
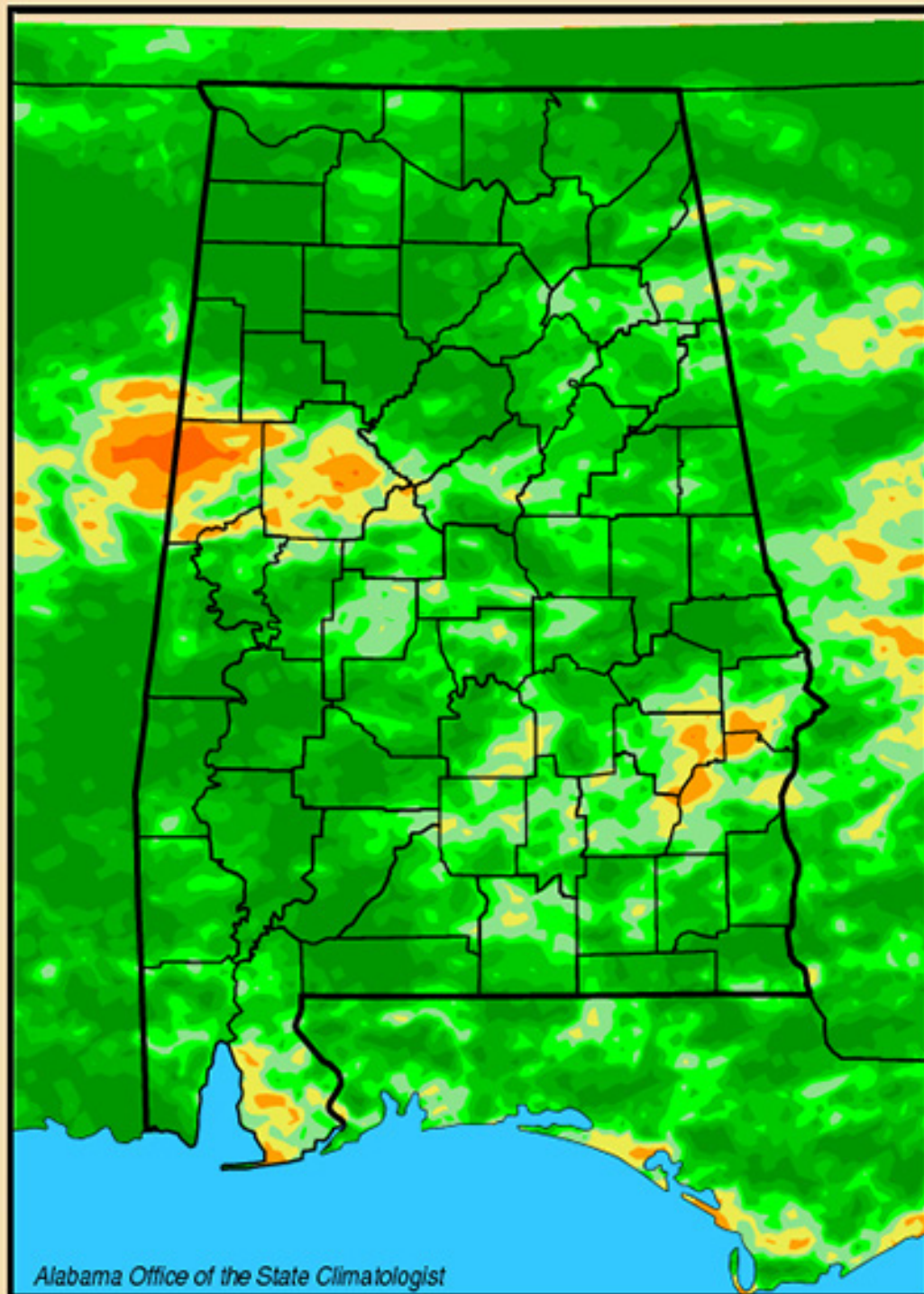
The Drought Monitor focuses on broad-scale conditions. Local conditions may vary. See accompanying text summary for forecast statements.

**Author:**  
Brian Fuchs  
National Drought Mitigation Center



<http://droughtmonitor.unl.edu/>

# Lawn-and-Garden Moisture Index for July 6, 2015



# Alabama Monthly Climate Summaries

June 2014

	Station Began	June Mean June Norm	June Hi Temp Record Hi	June Low Temp Record Low	Total Precip. Normal Prec.	Wettest June Driest June	Heaviest Day Record Day
Anniston	2/1903	78.9°	96° 6/22/15	61° 6/29/15	2.63"	9.27" 1982	1.14" 6/24/15
		76.6°	102°+ 6/27/54	42° 6/1/72	4.14"	0.00" 1988	3.60" 6/4/50
Auburn	1/1893	77.3°	91° 6/22/15	64° 6/5/15	2.56"	8.64" 1909	1.47" 6/12/15
		78.3°	107° 6/19/33	39° 6/3/56	4.17"	0.57" 1931	3.64" 6/5/28
Birmingham	1/1930	80.2°	98° 6/24/15	61° 6/3/15	1.70"	9.04" 1999	0.98" 6/9/15
		76.4°	106° 6/29/31	42° 6/1/66	3.78"	0.79" 1988	3.85" 6/23/57
Brewton	4/1977	78.0°	96.4° 6/22/15	65.2° 6/3/14	2.98"	13.80" 1989	0.92" 6/26/15
		77.3°	109° 6/18/33	40° 6/3/56	5.97"	1.90" 1998	6.45" 6/3/70
Calera	9/1900	79.1°	96° 6/23/15	62° 6/3/15	2.02"	14.58" 2003	0.82" 6/1/15
		76.0°	103° 6/29/89	37° 6/1/66	4.15"	0.06" 1902	5.04" 6/12/42
Clanton	2/1893	77.4°	93.2° 6/23/15	61.6° 6/3/15	2.43"	11.82" 1991	0.88" 6/20/15
		76.0°	106° 6/19/36	42° 6/3/56	4.16"	0.69" 1988	7.82" 6/26/91
Courtland		77.6°	94.8° 6/26/15	58.4° 6/3/15	1.15"	M	0.92" 6/27/15
		M	M	M	M	M	M
Cullman	7/1907	75.9°	93.6° 6/26/15	58° 6/29/15	1.49"	M	0.77" 6/8/15
		M	M	M	M	M	M
Decatur	2/1880	79.1°	96° 6/18/15	59° 6/3/15	3.21"	11.07" 1900	*3.26" 6/1/15
		77.9°	108° 6/10/14	44° 6/3/56	3.58"	0.20" 1931	3.06" 6/4/34
Dothan	2/1902	81.0°	97° 6/21/15	67° 6/29/15	3.20"	8.52" 1942	1.05" 6/10-11/15
		80.1°	104° 6/27/52	49° 6/3/56	4.31"	1.10" 1945	3.78" 6/22/49
Fairhope	8/1917	78.5°	92.8° 6/23/15	66.1° 6/6/15	4.57"	18.52" 1989	0.81" 6/2/15
		79.2°	100°+ 6/11/54	52° 6/1/84	5.94"	0.71" 1977	7.80" 6/9/89
Gadsden	7/1893	81.8°	88° 6/15/15	75° 6/9/15	1.91"	10.30" 1994	1.51" 6/1/15
		75.8°	102° 6/27/54	42° 6/3/56	4.34"	0.13" 1988	3.10" 6/25/99
Gainesville Lock	6/1948	77.7°	94.2° 6/23/15	59.9° 6/4/15	2.21"	9.56" 1983	0.72" 6/12/15
		77.2°	101° 6/24/77	42° 6/1/84	4.07"	0.61" 1988	3.49" 6/13/87
Greensboro	2/1890	77.3°	94.9° 6/23/15	59.8° 6/4/15	1.85"	10.25" 1999	0.63" 6/13/15
		78.9°	105°+ 6/29/54	41° 6/1/66	3.72"	0.66" 1988	5.50" 6/3/70
Highland Home	3/1892	77.8°	95° 6/23/15	63.6° 6/2/15	4.04"	12.90" 1983	1.49" 6/26/15
		76.9°	104°+ 6/7/85	45° 6/1/84	4.70"	1.22" 1971	4.30" 6/3/70
Huntsville	1/1959	81.3°	99° 6/26/15	62° 6/3/15	2.38"	14.99" 1989	1.18" 6/1/15
		76.5°	101° 6/29/89	45° 6/1/72	4.10"	0.17" 1988	4.46" 6/14/89

# Alabama Monthly Climate Summaries

June 2014

	Station Began	June Mean June Norm	June Hi Temp Record Hi	June Low Temp Record Lo	Total Precip. Normal Prec.	Wettest June Driest June	Heaviest Day Record Day
Mobile	3/1900	80.7°	98° 6/22/15	67° 6/5/15	5.06"	11.00" 1982	1.45" 6/24/15
		79.3°	102°+ 6/29/54	49° 6/1/84	5.01"	1.26" 1977	6.08" 6/20/61
Montgomery	6/1948	81.4°	98° 6/22/15	65° 6/4/15	3.99"	14.44" 1989	1.70" 6/9/15
		78.9°	105° 6/28/54	49°+ 6/1/84	4.13"	0.33" 1979	3.91" 6/28/57
Muscle Shoals	12/1940	79.9°	98° 6/22/15	59° 6/4/15	2.36"	13.43" 1989	1.69" 4/26/15
		76.5°	104° 6/28/52	44° 6/1/72	4.90"	1.03" 1988	5.60" 6/12/92
Russellville	9/1953	76.0°	93.5° 6/16/15	55.8° 6/3/15	*0.22"	12.71" 1997	0.09" 6/8/15
		73.7°	102° 6/28/54	36°+ 6/4/89	4.23"	0.50" 1988	3.30" 6/8/94
Scottsboro	10/1891	75.9°	93.8° 6/26/15	57.9° 6/29/15	1.83"	9.08" 1989	0.94" 6/27/15
		75.5°	107°+ 6/29/31	39° 6/3/56	4.38"	0.65" 1988	3.72" 6/29/41
Selma	1/1895	78.2°	97.5° 6/23/15	59.2° 6/4/15	2.85"	10.32" 1989	0.79" 6/27/15
		80.0°	108° 6/28/54	42° 6/1/84	4.13"	0.34" 1988	3.65" 6/25/91
Talladega	2/1888	77.7°	94.4° 6/17/15	60.1° 6/29/15	2.52"	11.97" 1989	0.86" 6/1/15
		77.0°	102° 6/27/54	39° 6/1/72	4.64"	0.32" 1988	4.60" 6/22/97
Thomasville	9/1891	76.7°	94.2° 6/23/15	60.6° 6/3/15	4.43"	12.69" 1989	1.55" 6/27/15
		78.7°	108° 6/26/30	46°+ 6/1/84	4.92"	0.93" 1988	3.98" 6/29/43
Troy	6/1908	80.1°	99° 6/23/15	63° 6/29/15	4.11"	12.63" 1989	1.37" 6/26/15
		77.5°	105° 6/19/33	43° 6/9/00	4.78"	1.04" 1986	4.36" 6/4/70
Tuscaloosa	6/1948	80.4°	99° 6/24/15	60° 6/3/15	1.70"	11.98" 1989	0.63" 6/1/15
		78.7°	105° 6/28/52	45° 6/3/56	4.20"	1.22" 1988	3.41" 6/18/63
Valley Head	1/1893	74.5°	92.3° 6/24/15	56.1° 6/29/15	3.84"	9.19" 1976	1.99" 6/26/15
		72.2°	101° 6/28/52	35° 6/1/86	4.33"	0.54" 1988	3.08" 6/10/61
Statewide June 2015		78.68°	99° 3 stations	55.8° Russellville	2.82"	18.52" Fairhope	3.26" Decatur
June Norm		77.24°	109° Brewton	35° Valley Head	4.43"	0.00" Anniston	7.82" Clanton

M: Data is missing or not available

\*New Record

#This data is missing this month due to an instrument malfunction

^ This record differs from long-term data in the AOSC climate database:

[http://nsstc.uah.edu/aclimate/climate/daily\\_climate\\_and\\_normals.php](http://nsstc.uah.edu/aclimate/climate/daily_climate_and_normals.php)

# New Local Climate Records<sup>1</sup>

## June 2015

### Precipitation, Daily

	New Record	Previous Year	Previous Record	Period of Record
<b>01 June 2015</b>				
CLAYTON	1.28	1951-06-01	0.90	86
GADSDEN	1.90	1995-06-01	1.53	62
SCOTTSBORO	1.49	1922-06-01	1.46	123
MOBILE DTN AIRPORT	2.56	1960-06-01	1.29	66
<b>08 June 2015</b>				
JORDAN DAM	1.73	1978-06-08	0.61	78
MITCHELL DAM	0.80	1940-06-08	0.74	78
<b>09 June 2015</b>				
MONTGOMERY AIRPORT	1.70	1975-06-09	1.18	67
<b>10 June 2015</b>				
ALEXANDER CITY	0.99	1975-06-10	0.60	45
CAHABA PUMP HOUSE	1.60	2013-06-10	1.08	33
CHATOM	2.00	2012-06-10	1.60	65
COFFEEVILLE L&D	1.78	2012-06-10	0.74	32
<b>11 June 2015</b>				
WALNUT GROVE	2.00	2012-06-11	1.50	74
<b>24 June 2015</b>				
GREENVILLE	1.30	1963-06-24	1.18	114
<b>27 June 2015</b>				
ATMORE	1.14	2000-06-27	0.97	75
PLANTERSVILLE	1.79	1999-06-27	1.76	75

### Maximum High Temperature, Daily

	New Record	Previous Hottest Day	Previous Record	Period of Record
<b>11 June 2015</b>				
BANKHEAD L&D	103	1968-06-11	98	58
<b>16 June 2015</b>				
HUNTSVILLE INTL	98	2011-06-16	95	56
<b>17 June 2015</b>				
BANKHEAD L&D	98	2011-06-17	97	58
<b>18 June 2015</b>				
RUSSELLVILLE No 2	98	2007-06-18	96	61
<b>19 June 2015</b>				
BANKHEAD L&D	99	1967-06-19	97	58
<b>23 June 2015</b>				
ENTERPRISE 2 W	100	2006-06-23	99	49
<b>24 June 2015</b>				
CLAYTON	99	1998-06-24	98	59

<sup>1</sup> <http://wf.ncdc.noaa.gov/extremes/records/>

# Community Collaborative Rain, Hail & Snow Network (CoCoRAHS)

June 2015

	Ave. Total Precip.	# Stations
Autauga	5.01	2
Baldwin	4.21	21
Barbour	n.a.	0
Bibb	2.40	1
Blount	2.28	9
Bullock	n.a.	0
Butler	n.a.	0
Calhoun	3.49	2
Chambers	4.98	1
Cherokee	2.20	1
Chilton	10.11	1
Choctaw	3.83	1
Clarke	4.16	1
Clay	n.a.	0
Cleburne	n.a.	0
Coffee	1.54	1
Colbert	3.26	8
Conecuh	n.a.	0
Coosa	4.38	2
Covington	n.a.	0
Crenshaw	n.a.	0
Cullman	1.97	5
Dale	2.97	1
Dallas	2.98	1
DeKalb	3.34	3
Elmore	5.03	7
Escambia	4.26	1
Etowah	4.82	1
Fayette	3.47	1
Franklin	n.a.	0
Geneva	n.a.	0
Greene	n.a.	0
Hale	n.a.	0
Henry	n.a.	0

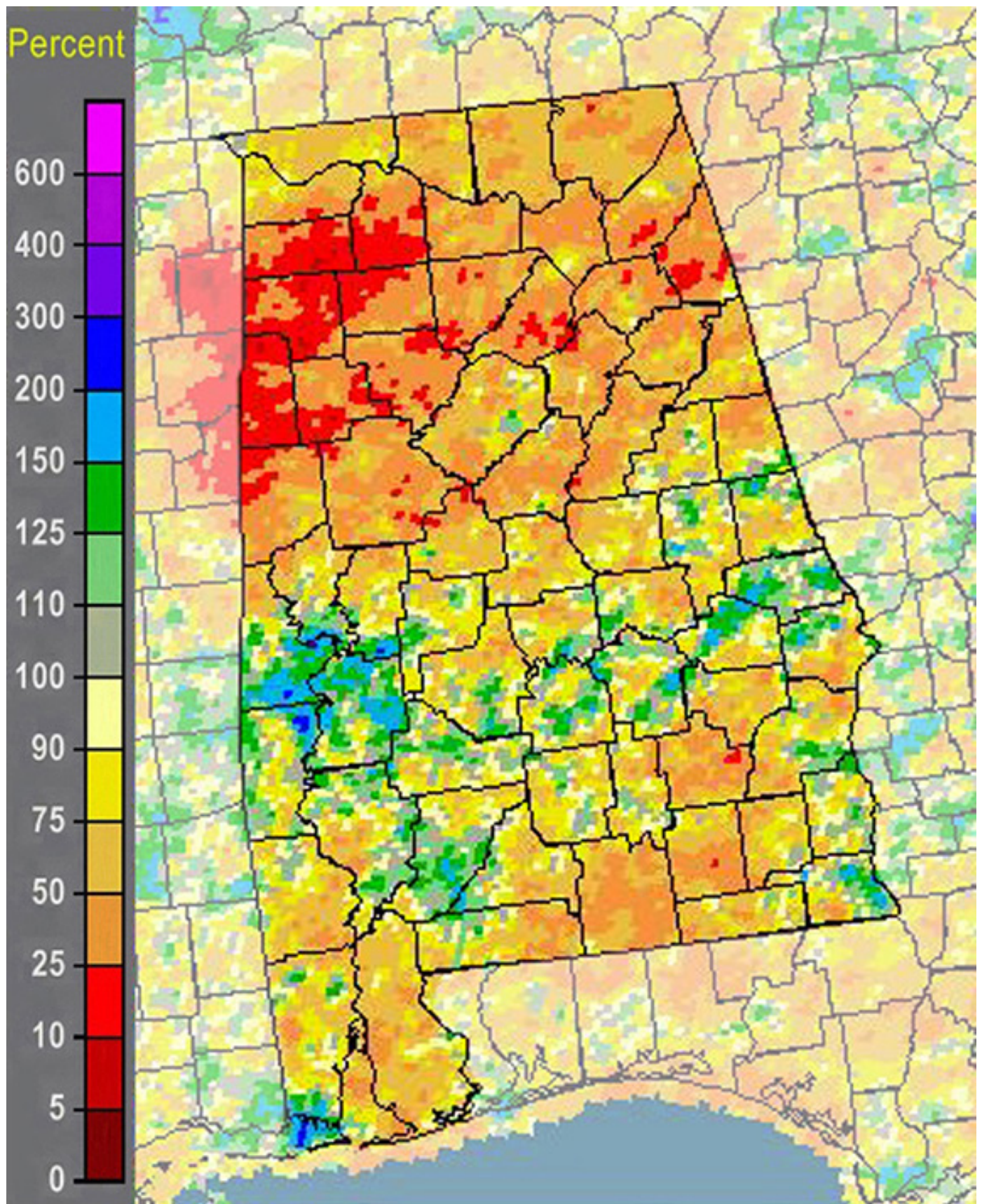
	Ave. Total Precip.	# Stations
Houston	4.12	1
Jackson	3.46	7
Jefferson	3.18	13
Lamar	1.47	1
Lauderdale	4.00	10
Lawrence	0.93	2
Lee	4.90	4
Limestone	3.33	10
Lowndes	n.a.	0
Macon	n.a.	0
Madison	3.21	48
Marengo	n.a.	0
Marion	1.17	1
Marshall	3.59	11
Mobile	5.39	13
Monroe	5.01	2
Montgomery	6.13	3
Morgan	3.80	7
Perry	n.a.	0
Pickens	1.29	1
Pike	n.a.	0
Randolph	3.42	1
Russell	4.34	2
St. Clair	2.67	4
Shelby	3.74	19
Sumter	n.a.	0
Talladega	3.78	6
Tallapoosa	5.81	4
Tuscaloosa	3.18	4
Walker	2.17	1
Washington	2.31	1
Wilcox	6.19	2
Winston	1.62	2

## Normal June

### Precipitation\*

Abbeville	4.81"
Alberta	3.76"
Alex City	3.85"
Aliceville	3.38"
Andalusia	4.92"
Ashland	4.42"
Athens	3.95"
Bay Minette	5.32"
Bessemer	3.89"
Billingsley	4.10"
Centreville WSMO	4.06"
Chatom	4.62"
Claiborne L&D	4.39"
Clayton	4.26"
Dauphin Isl.	4.90"
Elba	4.74"
Eufaula WR	4.11"
Evergreen	5.06"
Fayette	4.68"
Geneva 2	4.98"
Greenville	4.39"
Haleyville	4.20"
Hamilton 3S	4.27"
Heflin	4.35"
Hurtsboro	3.36"
Jasper	4.14"
Lafayette	3.60"
Livingston	3.76"
Melvin	3.76"
Milstead	3.72"
Moulton	3.77"
Oneonta	4.17"
Perryville	4.02"
Plantersville	4.02"
Rock Mills	3.95"
Rockford	4.02"
Sylacauga	4.22"
Union Springs	4.33"
Uniontown	3.61"
Vernon	4.43"
Warrior L&D	3.33"
Wetumpka	4.08"

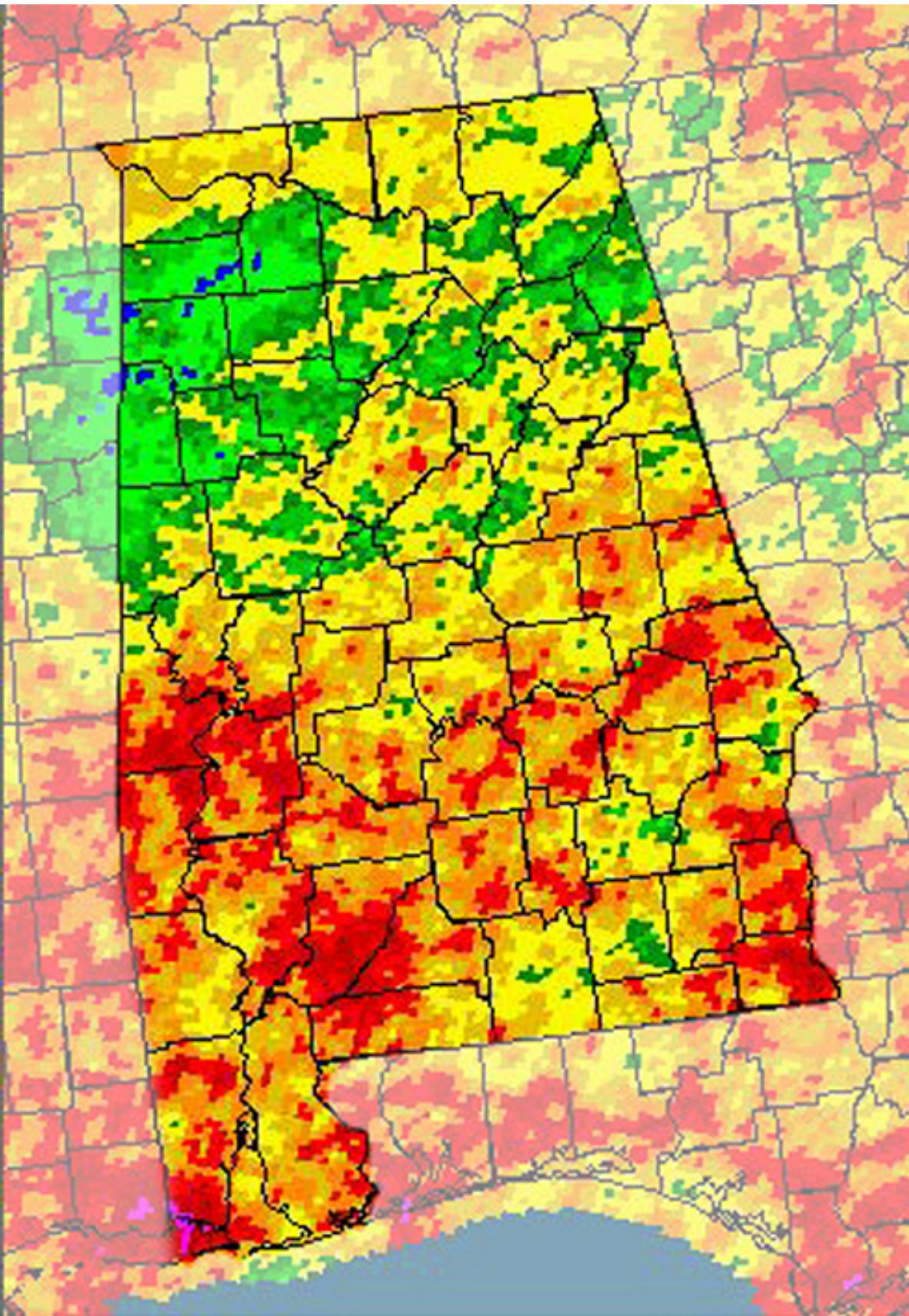
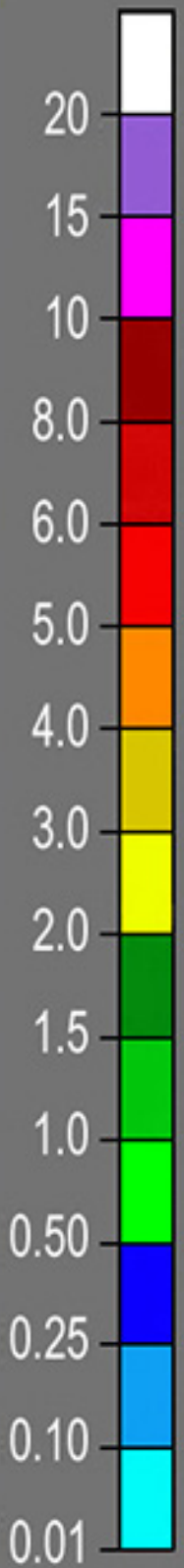
\*Southeast Regional Climate Center  
www.serc.com



***June 2015 NWS percentage of normal precipitation***



Inches



(NOAA) water.weather.gov

***June 2015 NWS multi-sensor precipitation estimate***

## MONTHLY AND YEAR-TO-DATE RAINFALL - YEAR 2015

Choctawhatchee, Pea and Yellow Rivers Watershed Management Authority

Flood Warning System Rain and River-Level Gauges

County	Gauge	Location & Water Body	Jan 2015 2014	Feb 2015 2014	March 2015 2014	April 2015 2014	May 2015 2014	June 2015 2014	July 2015 2014	Aug 2015 2014	Sept 2015 2014	Oct 2015 2014	Nov 2015 2014	Dec 2015 2014	YTD 2015 2014
Barbour	Star Hill	Al. Hwy. 239 S	2.76	4.28	2.08	6.28	8.12								23.52
	Star Hill		2.64	5.20	4.84	10.60	3.52								26.80
	Texasville	East Fork	2.72	4.24	1.08	8.40	4.76								21.20
	Texasville	Choctawhatchee	3.40	5.00	4.40	14.80	3.08								30.68
Coffee	Big Creek	Big Creek	3.36	4.16	2.08	8.84	3.04								21.48
	Big Creek	Hwy. 87 North	3.24	5.60	4.48	13.68	5.44								32.44
	Elba	Pea River	2.92	3.88	2.68	5.80	4.76								20.04
	Elba	Hwy. 84 East	2.92	5.20	4.16	13.24	4.84								30.36
	Enterprise	137 Lester Dr.	3.08	4.36	1.56	10.20	3.80								23.00
	Enterprise		3.24	5.48	6.60	16.52	3.76								35.60
	Folsom Bridge	Pea River	2.68	4.12	2.48	10.16	4.44								23.88
	Folsom Bridge	Hwy. 167 North	3.08	5.48	4.32	15.16	6.76								34.80
	Lowry Mill	Whitewater	3.48	3.92	2.32	5.64	3.80								19.16
	Lowry Mill	Creek	3.16	6.04	4.28	13.84	4.36								31.68
	New Brockton	Farm Center	2.72	4.60	2.36	6.64	4.24								20.56
	New Brockton	Hwy. 84	3.00	4.96	5.16	16.20	4.72								34.04
Covington	Yellow River	Yellow River	3.20	3.80	2.84	9.06	1.92								20.82
	Yellow River	Hwy. 55	3.16	5.16	7.04	15.88	4.60								35.84
	Yellow River*	Yellow River	n/a	3.93	2.49	7.32	3.48								17.22
	Yellow River	Hwy. 84	n/a	n/a	n/a	n/a	n/a								n/a
Dale	Ariton	Pea River	3.04	4.32	2.52	7.32	3.52								20.72
	Ariton	US Hwy. 231 North	3.36	5.48	4.12	14.00	2.88								29.84
	Daleville	Claybank Creek	3.60	4.52	1.60	9.68	4.64								24.04
	Daleville	Hwy. 84 West	2.60	6.00	6.44	16.08	2.52								33.64
	Newton	Choctawhatchee	2.96	3.80	1.64	7.04	4.68								20.12
	Newton	River, Hwy. 123 N	2.44	5.32	5.48	14.16	5.76								33.16
	Orark	Little Claybank Cr.	3.04	4.44	1.04	10.60	4.36								23.48
	Orark	US Hwy. 231	2.84	5.48	4.56	15.04	3.92								31.84
	Skipperville	West Fork	2.88	5.16	1.56	7.04	2.32								18.96
Skipperville	Choctawhatchee	2.80	5.68	4.44	12.28	3.28								28.48	

## MONTHLY AND YEAR-TO-DATE RAINFALL - YEAR 2015

Choctawhatchee, Pea and Yellow Rivers Watershed Management Authority

Flood Warning System Rain and River-Level Gauges

County	Gauge	Location & Water Body	Jan 2015 2014	Feb 2015 2014	March 2015 2014	April 2015 2014	May 2015 2014	June 2015 2014	July 2015 2014	Aug 2015 2014	Sept 2015 2014	Oct 2015 2014	Nov 2015 2014	Dec 2015 2014	YTD 2015 2014
Geneva	Geneva	Choctawhatchee	2.92	3.08	2.32	8.44	6.68								23.44
	Geneva	River, Hwy. 52 E	3.68	6.28	7.52	14.16	4.88								36.52
	Sellersville	Double Bridges	4.24	3.64	3.64	13.40	5.80								30.72
	Sellersville	Creek, Cty. Rd. 40	2.48	5.16	6.52	14.12	5.52								33.80
Henry	East Choctaw	E. Choctawhatchee	2.16	3.80	2.40	8.56	2.60								19.52
	East Choctaw	Hwy. 27 East	2.80	5.24	4.72	12.92	5.40								31.08
Houston	Oothan	Little Choctaw	3.12	2.84	3.32	6.16	5.80								21.24
	Oothan	Brannon Stand Rd.	3.24	4.84	5.52	11.36	2.92								27.88
Pike	Troy	400 Pell Ave.	2.68	4.60	2.16	6.84	4.12								20.40
	Troy		2.96	5.04	4.76	9.08	5.32								27.16
	Shiloh	Hwy. 130 West	2.88	4.32	2.04	7.56	6.44								23.24
	Shiloh		4.08	4.88	4.32	11.00	2.84								27.12

Average monthly rainfall of all gauges			Jan	Feb	March	April	May	June	July	Aug	Sept	Oct	Nov	Dec	YTD
2015			3.02	4.09	2.20	8.14	4.44								21.89
2014			3.06	5.38	5.18	13.71	4.32								31.65

\*New gauge at Yellow River on Hwy. 84 began reporting month of February, 2015.

# Alabama Climate Report Climate Extremes

## Hottest - Coldest

### Statewide Average Temperature

[http://www.sercc.com/climateinfo/monthly\\_seasonal.html](http://www.sercc.com/climateinfo/monthly_seasonal.html)

Record begins in 1895

# Alabama Climate Report Climate Extremes

## Wettest - Driest

### Statewide Average Precipitation

[http://www.sercc.com/climateinfo/monthly\\_seasonal.html](http://www.sercc.com/climateinfo/monthly_seasonal.html)

Record begins in 1895

## Year-to-date

Hottest	1.	1921	65.7°
	2.	1927	65.6°
	3.	1911	65.3°
	4.	1922	65.2°
	5.	1933	65.1°
		1998	65.1°
	7.	1925	65.0°
	8.	1990	64.9°
		2012	64.9°
	10.	1938	64.5°
	11.	2007	64.4°
	12.	1896	64.3°
January through Dec. 2014		AVG	63.1°
	<b>24.</b>	<b>2014</b>	<b>62.2°</b>
Coldest		1963	61.7°
	11.	1966	61.7°
	10.	1895	61.6°
	9.	1960	61.5°
		1901	61.4°
		1969	61.4°
	6.	1979	61.4°
		1940	61.2°
		1958	61.2°
	3.	1983	61.2°
	2.	1968	61.0°
1.	1976	60.7°	

## Year to Date

Wettest	1.	1929	75.08"
	2.	1975	74.77"
	3.	2009	73.78"
	4.	1983	70.36"
	5.	1961	69.83"
	6.	1979	67.92"
	7.	1948	67.64"
	8.	1973	67.17"
	9.	1912	66.56"
	10.	1964	66.50"
	11.	1919	65.97"
	12.	1900	65.85"
January through Dec. 2014	<b>56.</b>	<b>2014</b>	<b>55.95"</b>
		AVG	55.10"
Driest		1941	46.19"
	12.	1910	46.19"
	11.	1896	46.16"
		1981	45.80"
	9.	1930	45.80"
	8.	1921	45.44"
	7.	1914	45.33"
	6.	1968	45.22"
	5.	1931	43.84"
	4.	2000	42.50"
	3.	1904	40.60"
2.	2007	37.87"	
1.	1954	35.39"	

## Alabama State Climatologist

John R. Christy  
Alabama State Climatologist  
The University of Alabama  
in Huntsville  
christy@nsstc.uah.edu  
256-961-7763

## Contact:

Phillip Gentry  
UAHuntsville Communications  
The University of Alabama in Huntsville  
gentry@nsstc.uah.edu  
256.961.7618

Bob Clymer  
Assistant State Climatologist  
The University of Alabama in Huntsville  
bob.clymer@nsstc.uah.edu  
256-961-7771

<http://nsstc.uah.edu/alclimatereport>