

# The Alabama Climate Report

Brought to you by the Office of the Alabama Climatologist

Volume 4, Number 8, May 2014



Dr. John Christy, Alabama State Climatologist

Following on the heels of a deluge in late April, Alabama Gulf coast counties were inundated again in May. Mobile and Baldwin counties form what is known as Alabama's Climate Division 8, or the Gulf Coast Climate Division.

In these past two months along, some stations in these two counties totaled more than 40 inches of rain. Glub, glub.

That would easily make this the wettest April-May period in this climate division since the official record started in 1895. Using the May rain totals for Mobile and Fairhope as a proxy to fill in until the official data is released, the ten wettest April-May periods in the official National Climate Data Center record for the division would be:

1.	2014	26.02"
2.	1980	23.41"
3.	1991	21.41"
4.	2005	20.07"
5.	1907	18.64"
6.	1947	17.34"
7.	1983	17.14"
8.	1912	16.54"
9.	1995	15.43"
10.	1944	15.11"

That's the (mostly) official record.

If we look at the 42 rain gauges monitored by volunteers in the two county area, the average rainfall for the two counties the past two months was 37.78 inches. The average for 25 CoCoRAHS stations in Baldwin County was more than 42 inches of rain during April and May.

And all of that rain fell without a tropical storm or hurricane to drive precipitation. Amazing.

Much of the rest of the state saw below average rainfall in May — as little as 1.58" in Tuscaloosa. Temperature wise, there were warm and cool periods that averaged out over the month to almost exactly the long-term average for the state as a whole. Most locations were less than a degree above average, while near the wet coast, the May average temperature was as much as 2.3° F below aver-

age as in Mobile.

On a historical note, this month is the 100th anniversary of the June 1914 heat wave — the warmest June in Alabama's 119-year climate record. The average statewide temperature that month, tallying all the state's highs and lows, was an uncomfortable 83.09 degrees. The normal average June temperature for Alabama is 77.7 degrees.

- John Christy

# U.S. Drought Monitor Alabama

**May 27, 2014**  
(Released Thursday, May. 29, 2014)  
Valid 8 a.m. EDT



Drought Conditions (Percent Area)

	None	D0-D4	D1-D4	D2-D4	D3-D4	D4
Current	91.80	8.20	0.54	0.00	0.00	0.00
Last Week 6/20/2014	92.99	7.01	0.54	0.00	0.00	0.00
3 Months Ago 3/28/2014	90.20	9.80	0.00	0.00	0.00	0.00
Start of Calendar Year 12/31/2013	97.35	2.65	0.00	0.00	0.00	0.00
Start of Water Year 10/1/2013	96.85	3.15	0.00	0.00	0.00	0.00
One Year Ago 6/29/2013	86.96	13.04	3.18	0.00	0.00	0.00

*Intensity:*

- D0 Abnormally Dry
- D1 Moderate Drought
- D2 Severe Drought
- D3 Extreme Drought
- D4 Exceptional Drought

The Drought Monitor focuses on broad-scale conditions. Local conditions may vary. See accompanying text summary for forecast statements.

**Author:**  
Michael Brewer  
NCDC/NOAA



<http://droughtmonitor.unl.edu/>

## Alabama Monthly Climate Summaries

May 2014

	Station Began	May Mean May Norm	May Hi Temp Record Hi	May Low Temp Record Low	Total Precip. Normal Prec.	Wettest May Driest May	Heaviest Day Record Day
Anniston	2/1903	70.2°	89° 5/25/14	44° 5/16/14	3.10"	8.59" 1983	0.99" 5/9-10/14
		69.4°	98° 5/16/82	34° 5/13/80	4.16"	1.81" 1977	3.32" 5/19/83
Auburn	1/1893	69.4°	88° 5/25/14	45° 5/16/14	3.09"	10.33" 1915	1.53" 5/14/14
		71.7°	98° 5/27/1911	35° 5/13/80	3.75"	0.36" 1914	4.53" 5/7/15
Birmingham	1/1930	71.2°	89° 5/26/14	46° 5/3/14	2.32"	9.57" 1983	1.18" 5/14/14
		70.4°	99° 5/28/82	36° 5/4/71	4.83"	0.88" 2000	3.85" 5/8/87
Brewton	4/1977	70.6°	91.1° 5/25/14	46.5° 5/16/14	7.79"	15.97" 1991	5.00" 5/14/14
		70.9°	100° 5/26/33	34° 5/4/71	5.56"	0.85" 1988	5.00"+ 5/10/95
Calera	9/1900	71.4°	89° 5/30/14	48° 5/3/14	3.00"	9.99" 2003	1.23" 5/14/14
		69.5°	98° 5/21/82	31° 5/13/80	4.02"	0.34" 1977	3.65" 5/12/12
Clanton	2/1893	69.5°	89.1° 5/25/14	44.8° 5/3/14	3.42"	13.26" 1991	1.41" 5/14/14
		70.5°	99°+ 5/31/45	33° 5/13/80	4.36"	0.57" 1977	3.75" 5/20/48
Courtland		68.7°	87.2° 5/26/14	43.9° 5/1/14	4.94"	M	2.45" 5/14/14
		M	M	M	M	M	M
Cullman	7/1907	66.8°	86.5° 5/31/14	38.9° 5/3/14	2.65"	M	1.27" 5/18/14
		M	M	M	M	M	M
Decatur	2/1880	70.0°	90° 5/25/14	43° 5/3/14	3.92"	8.44" 1907	1.45" 5/28-29/14
		70.2°	100° 3/31/14	34° 5/2/1909	3.87"	0.15" 1941	3.50" 5/29/1912
Dothan	2/1902	73.4°	96° 5/25/14	48° 5/16/14	3.89"	8.73" 1947	2.84" 5/14/14
		74.6°	104° 5/30/37	44° 5/5/54	3.37"	0.45" 1982	4.10" 5/12/1903
Fairhope	8/1917	71.0°	87° 5/25/14	45.3° 5/16/14	8.22"	13.75" 1991	2.06" 5/28/14
		73.3°	98° 5/27/53	43° 5/13/80	5.80"	0.31" 1988	6.54" 5/20/81
Gadsden	7/1893	68.3°	90° 4/31/14	41° 5/16/14	3.12"	7.75" 1973	0.99" 5/18/14
		68.4°	99° 5/24/70	33° 5/13/80	4.59"	1.43" 2000	3.22" 5/22/87
Gainesville Lock	6/1948	70.1°	88.8° 5/26/14	46.1° 5/1/14	2.80"	12.17" 1978	1.25" 5/28/14
		70.0°	97° 5/31/77	38° 5/5/86	4.43"	0.12" 2000	5.12" 5/1/78
Greensboro	2/1890	70.3°	89.6° 5/23/14	44.4° 5/3/14	4.37"	10.30" 1991	2.02" 5/28/14
		71.9°	98°+ 5/24/96	37°+ 5/10/86	4.47"	0.81" 1992	4.10" 5/18/30
Highland Home	3/1892	70.7°	89.3° 5/25/14	49.5° 5/1/14	6.65"	9.61" 1976	3.58" 5/14/14
		70.7°	98° 5/22/82	40° 5/13/81	4.05"	0.44" 2000	4.46" 5/4/78
Huntsville	1/1959	70.9°	90° 5/31/14	47° 5/3/14	2.80"	11.88" 1983	1.11" 5/14/14
		69.2°	96° 5/20/1980	36° 5/3/71	5.04"	0.78" 2007	4.64" 5/16/80



## Alabama Monthly Climate Summaries

May 2014

	Station Began	May Mean May Norm	May Hi Temp Record Hi	May Low Temp Record Lo	Total Precip. Normal Prec.	Wettest May Driest May	Heaviest Day Record Day
Mobile	3/1900	71.8°	90° 5/25/14	47° 5/16/14	9.79"	15.08" 1980	4.39" 5/9-10/14
		73.5°	100°+ 5/27/53	43° 5/13/80	6.10"	0.36" 1996	7.96" 5/5/81
Montgomery	6/1948	73.0°	93° 5/25/14	48° 5/16/14	5.55"	12.01" 1978	2.83" 5/14/14
		72.3°	98° 5/27/53	40° 5/4/71	4.14"	0.68" 1995	5.23" 5/9/78
Muscle Shoals	12/1940	70.2°	90° 5/26/14	43° 5/3/14	1.88"	11.86" 1983	1.69" 5/14/14
		68.8°	99° 5/29/41	36°+ 5/4/71	5.30"	1.18" 1987	3.32" 5/17/80
Russellville	9/1953	67.8°	86.9° 5/26/14	38.9° 5/3/14	3.07"	18.37" 1991	1.77" 5/14/14
		66.3°	95°+ 5/27/00	31°+ 5/4/76	5.87"	0.62" 1987	6.10" 5/8/84
Scottsboro	10/1891	67.1°	87° 5/23/14	40.4° 5/3/14	2.60"	9.81" 1983	0.87" 5/30/14
		68.1°	97° 5/29/41	32° 5/4/71	5.02"	1.27" 1992	5.00" 5/3/97
Selma	1/1895	70.4°	89.5° 5/23/14	44.2° 5/3/14	4.94"	9.01" 1991	2.04" 5/28/14
		71.8°	100° 5/27/53	40° 5/7/44	3.71"	0.10" 1977	3.40" 5/4/57
Talladega	2/1888	68.9°	88.8° 5/23/14	42.5° 5/3/14	4.44"	11.72" 1983	1.43" 5/9/14
		70.0°	96°+ 5/25/96	32° 5/4/71	4.71"	1.55" 1995	5.22" 5/19/83
Thomasville	9/1891	69.4°	89.2° 5/25/14	43.9° 5/3/14	7.48"	12.04" 1980	2.23" 5/14/14
		72.1°	99° 5/31/37	36° 5/13/80	4.75"	0.64" 1988	5.07" 5/1/40
Troy	6/1908	71.9°	93° 5/25/14	46° 5/16/14	5.34"	9.57" 1976	2.64" 5/14/14
		71.2°	99° 5/30/37	38° 5/4/71	3.73"	0.14" 1977	4.65" 5/6/53
Tuscaloosa	6/1948	71.6°	91° 5/25/14	46° 5/3/14	1.58"	11.13" 1976	0.56" 5/13/14
		71.9°	98° 5/31/51	36° 5/4/76	4.55"	0.44" 2000	3.91" 5/1/58
Valley Head	1/1893	65.9°	85.9° 5/25/14	39.3° 5/3/14	2.61"	8.63" 1978	0.81" 5/18/14
		66.4°	94°+ 5/29/62	29°+ 5/4/76	4.70"	1.08" 1992	4.19" 5/3/97
Statewide May 2014		70.20°	96° 2 Dothan	38.9° 2 stations	4.30"	18.37" Russellville	5.00" Brewton
May Norm		70.52°	104° Dothan	29°+ Valley Head	4.59"	0.10" Selma	7.96" Mobile

M: Data is missing or not available

\*New Record

#This data is missing this month due to an instrument malfunction

^ This record differs from long-term data in the AOSC climate database:

[http://nsstc.uah.edu/alcimate/climate/daily\\_climate\\_and\\_normals.php](http://nsstc.uah.edu/alcimate/climate/daily_climate_and_normals.php)

# Community Collaborative Rain, Hail & Snow Network (CoCoRAHS)

May 2014

## Normal

### May

#### Precipitation\*

Abbeville .....	4.03"
Alberta .....	4.25"
Alex City .....	4.42"
Aliceville .....	3.90"
Andalusia .....	4.69"
Ashland .....	4.44"
Athens .....	4.12"
Bay Minette .....	5.48"
Bessemer .....	5.16"
Billingsley .....	3.70"
Centreville WSMO .....	4.56"
Chatom .....	5.19"
Claiborne L&D .....	4.33"
Clayton .....	4.00"
Dauphin Isl. ....	5.51"
Elba .....	4.27"
Eufaula WR .....	4.04"
Evergreen .....	4.69"
Fayette .....	4.42"
Geneva 2 .....	4.52"
Greenville .....	4.12"
Haleyville .....	4.97"
Hamilton 3S .....	5.92"
Heflin .....	4.87"
Hurtsboro .....	4.53"
Jasper .....	5.14"
Lafayette .....	4.29"
Livingston .....	4.18"
Melvin .....	4.52"
Milstead .....	3.93"
Moulton .....	4.97"
Oneonta .....	4.44"
Perryville .....	3.72"
Plantersville .....	4.00"
Rock Mills .....	3.95"
Rockford .....	4.32"
Sylacauga .....	3.80"
Union Springs .....	3.83"
Uniontown .....	3.83"
Vernon .....	4.94"
Warrior L&D .....	4.14"
Wetumpka .....	3.63"

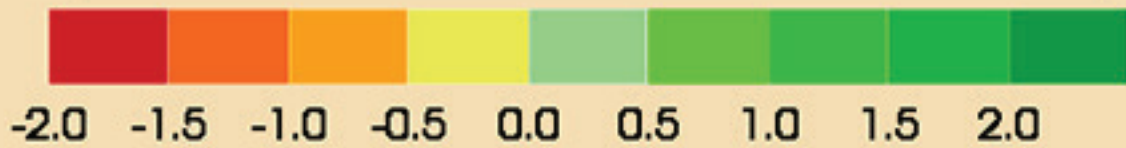
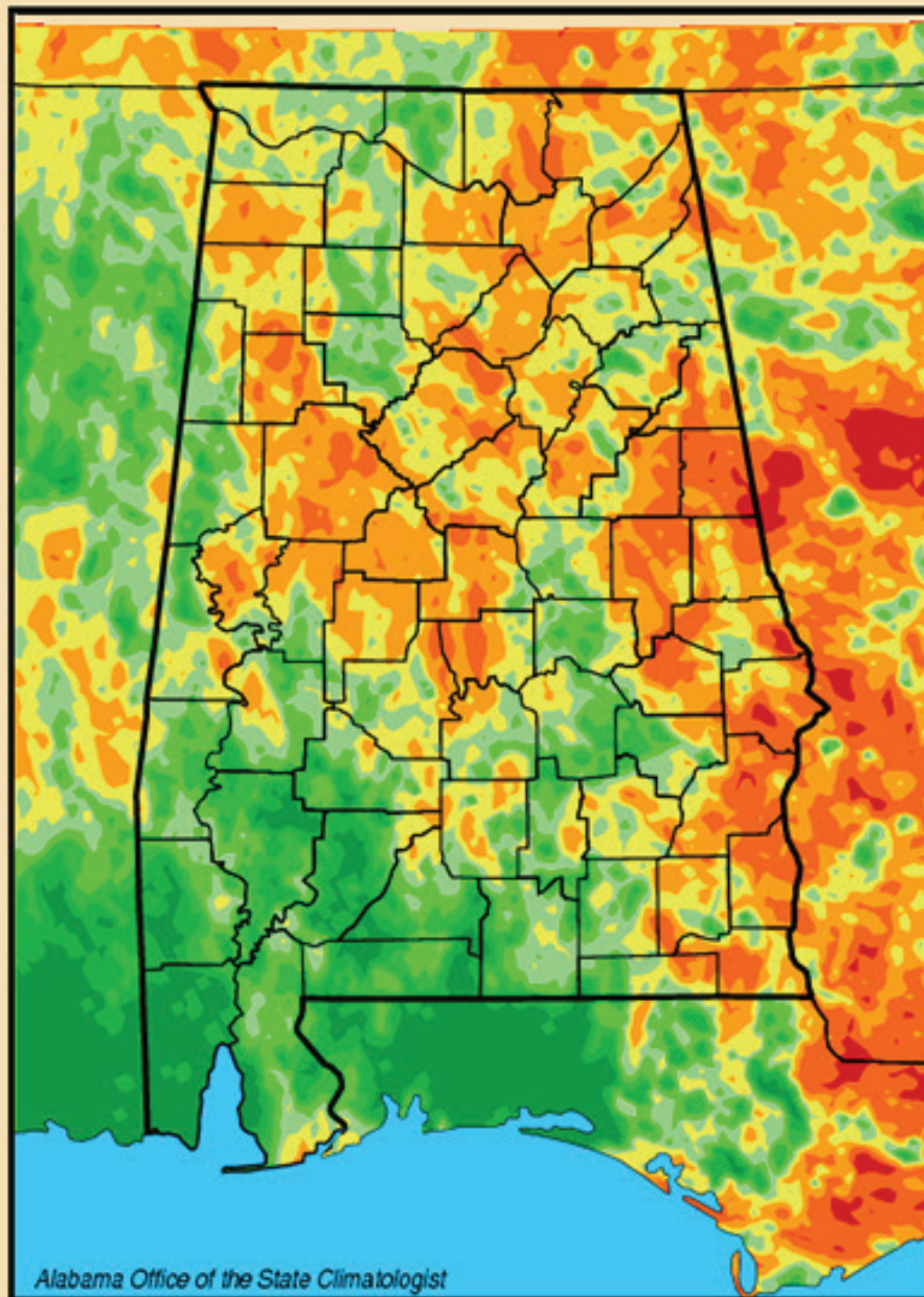
	Ave. Total Precip.	# Stations
Autauga	4.26	3
Baldwin	18.73	25
Barbour	0.00	0
Bibb	3.58	1
Blount	3.29	9
Bullock	0.00	0
Butler	0.00	0
Calhoun	3.68	3
Chambers	1.47	1
Cherokee	2.70	1
Chilton	4.75	2
Choctaw	2.53	1
Clarke	8.69	3
Clay	n.a.	0
Cleburne	n.a.	0
Coffee	7.85	1
Colbert	3.24	8
Conecuh	n.a.	0
Coosa	4.87	2
Covington	n.a.	0
Crenshaw	n.a.	0
Cullman	3.53	4
Dale	6.85	2
Dallas	3.90	1
DeKalb	3.75	2
Elmore	6.59	7
Escambia	9.86	1
Etowah	5.28	1
Fayette	2.09	3
Franklin	n.a.	0
Geneva	n.a.	0
Greene	n.a.	0
Hale	n.a.	0
Henry	n.a.	0

	Ave. Total Precip.	# Stations
Houston	7.91	1
Jackson	3.37	7
Jefferson	3.71	14
Lamar	4.21	1
Lauderdale	4.03	11
Lawrence	2.89	2
Lee	3.31	5
Limestone	4.39	12
Lowndes	n.a.	0
Macon	n.a.	0
Madison	3.96	56
Marengo	n.a.	0
Marion	3.32	1
Marshall	2.91	11
Mobile	16.34	17
Monroe	10.86	2
Montgomery	7.45	3
Morgan	4.22	9
Perry	n.a.	0
Pickens	6.00	1
Pike	n.a.	0
Randolph	2.62	1
Russell	3.77	2
St. Clair	4.16	4
Shelby	4.28	19
Sumter	n.a.	0
Talladega	4.42	6
Tallapoosa	4.64	4
Tuscaloosa	2.65	4
Walker	n.a.	0
Washington	9.53	1
Wilcox	6.78	2
Winston	5.37	2

\*Southeast Regional Climate Center  
www.serc.com



# Lawn-and-Garden Moisture Index for June 2, 2014





# Total Rainfall - May 2014

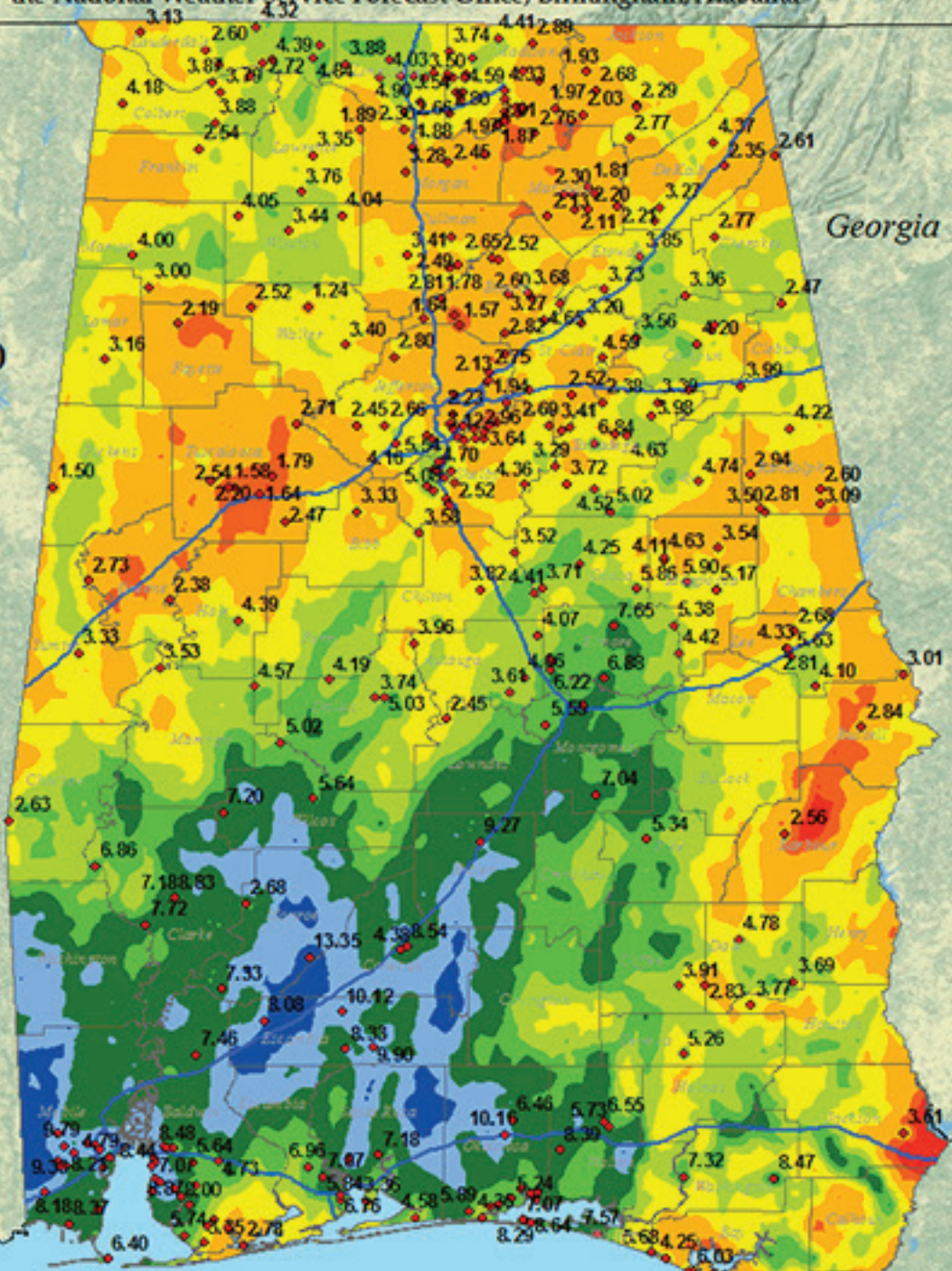
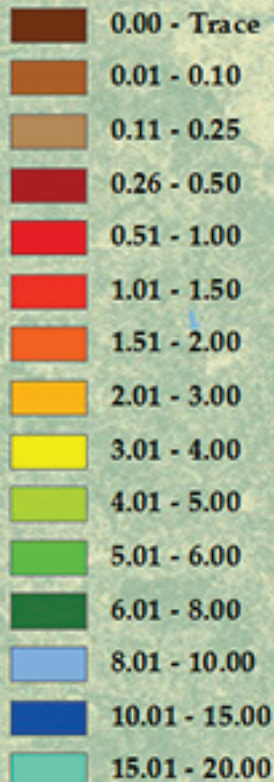
Source: Co-Op Sites, ASOS Observations, CoCoRaHS Observers, and RFC Estimates  
Created by the National Weather Service Forecast Office, Birmingham, Alabama



Birmingham, AL

GIS

Rainfall (Inches)



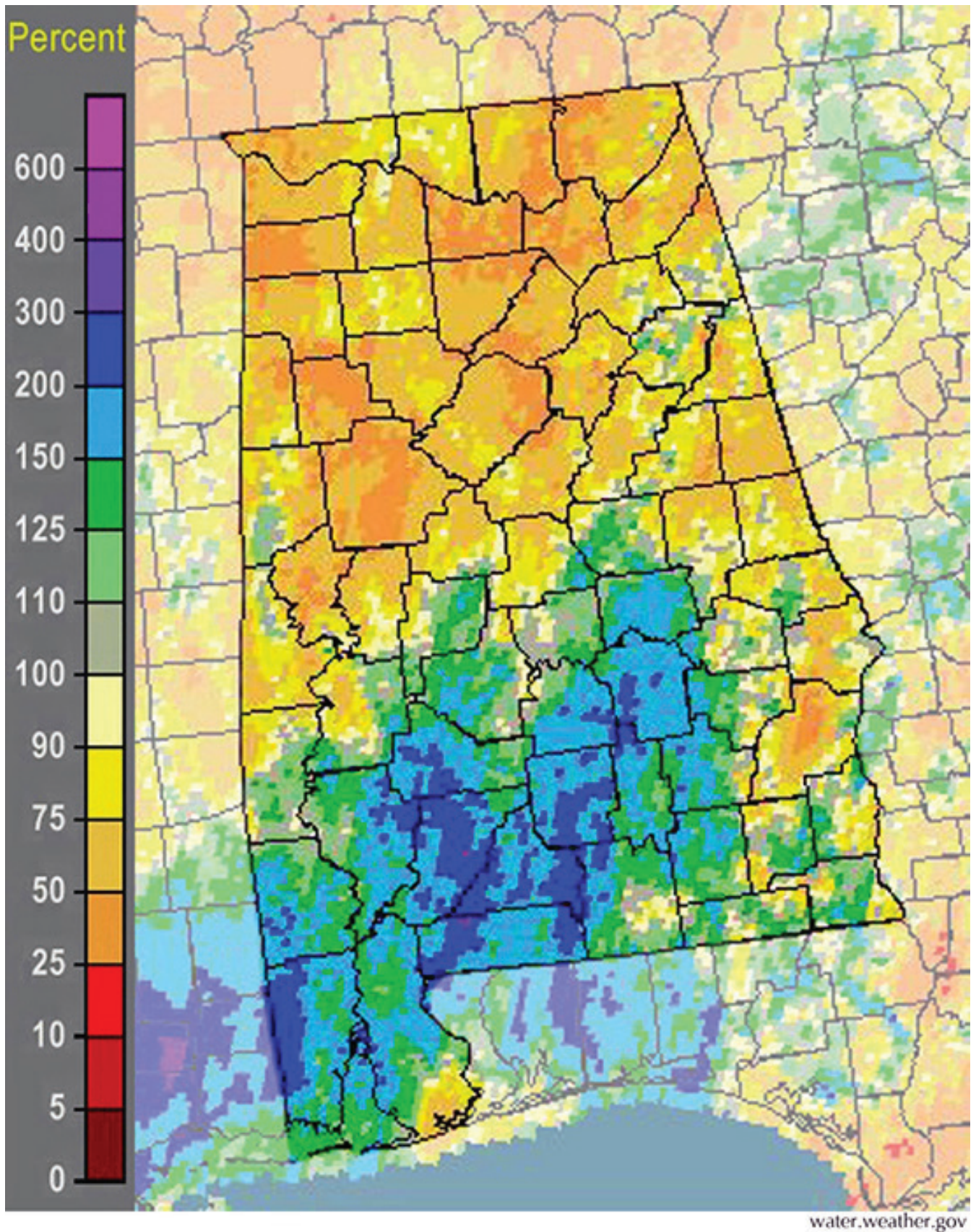
U.S. National Weather Service  
Birmingham Alabama



@NWSBirmingham  
#bmxwx

This map is an interpolation of actual reported values combined with RFC estimates and should be considered as an estimation only.  
Rainfall totals are from 7am May 1st through 7am June 1st, 2014.





*May 2014 NWS percentage of normal precipitation*

# New Local Climate Records<sup>1</sup>

## May 2014

### Precipitation, Wettest May Day

	New Record	Previous Wettest Day	Previous Record	Period of Record
<b>15 May 2014</b>				
BREWTON 3 SSE	6.00"	1995-05-10	5.00"	88
GREENVILLE	4.00"	1978-05-04	3.85"	113

### Precipitation, Daily

	New Record	Previous Year	Previous Record	Period of Record
<b>10 May 2014</b>				
CHATOM	3.05"	2006	2.42"	64
CLAIBORNE L&D	2.20"	1987	1.22"	61
CLANTON	1.59"	1991	1.48"	119
COFFEEVILLE L&D	2.00"	2006	1.69"	31
GREENVILLE	2.44"	2006	1.45"	113
JACKSON	3.88"	2006	3.10"	52
LAY DAM	1.01"	1990	0.70"	77
MILLERS FERRY L&D	1.76"	1985	1.51"	33
<b>11 May 2014</b>				
COFFEEVILLE L&D	2.00"	1991	1.00"	31
<b>12 May 2014</b>				
PLANTERSVILLE	1.51"	1991	1.36"	74
<b>14 May 2014</b>				
TALLAPOOSA WATER PL	2.56"	1987	1.19"	36
MOBILE DT AIRPORT	0.51"	1950	0.33"	65
<b>15 May 2014</b>				
ALBERTA	3.12"	1976	2.05"	73
ATMORE	3.80"	1942	1.87"	74
BREWTON 3	6.00"	1976	2.23"	88
CAHABA PUMP HOUSE	1.77"	2003	1.57"	32
DAUPHIN ISLAND No. 2	2.01"	1987	1.12"	38
ENTERPRISE 2 W	2.00"	1980	1.57"	48
EVERGREEN	4.91"	1976	3.10"	118
GREENVILLE	4.00"	1905	2.00"	113
JONES BLUFF L&D	2.25"	1987	1.98"	33
MILLERS FERRY L&D	2.55"	2003	0.71"	33
PINE APPLE	2.25"	1976	1.48"	46
UNIONTOWN	2.28"	1942	1.97"	119
<b>18 May 2014</b>				
ATHENS	0.91"	1999	0.39"	73
<b>19 May 2014</b>				
ADDISON	1.03"	1986	0.85"	76
<b>28 May 2014</b>				
ATHENS	1.48"	1959	1.04"	73
MOBILE DT AIRPORT	1.75"	1965	1.61"	65
MOBILE REG. AIRPORT	3.07"	1997	2.29"	66
<b>29 May 2014</b>				
BREWTON 3 SSE	1.95"	1996	1.80"	88
CHATOM	3.80"	1997	2.35"	64
CODEN	6.67"	1997	3.00"	57
<b>30 May 2014</b>				
COFFEEVILLE L&D	1.32"	1995	1.03"	31
GENEVA NUMBER 2	1.40"	1997	0.86"	38
GREENSBORO	3.08"	1901	2.20"	122

### Maximum High Temperature, Daily

	New Record	Previous Hottest Day	Previous Record	Period of Record
<b>27 May 2014</b>				
ENTERPRISE	96°	2000	94°	48

### Minimum Low Temperature, Daily

	New Record	Previous Year	Previous Record	Period of Record
<b>5 May 2014</b>				
DEMOPOLIS LOCK & DAM	38°	1971	40°	62
<b>15 May 2014</b>				
DAUPHIN ISLAND No. 2	55°	2002	59°	38
MOBILE DT AIRPORT	52°	2006	55°	65
MOBILE REG. AIRPORT	50°	1954	53°	66
<b>16 May 2014</b>				
DAUPHIN ISLAND No. 2	56°	2011	63°	38
FAIRHOPE 2 NE	46°	2011	49°	96
GENEVA NUMBER 2	45°	2011	47°	38
GREENVILLE	43°	2006	44°	87
MOBILE REG. AIRPORT	47°	2011	48°	66
<b>17 May 2014</b>				
GREENVILLE	43°	2011	45°	87
<b>18 May 2014</b>				
DEMOPOLIS LOCK & DAM	39°	2011	44°	62

<sup>1</sup> <http://wfw.ncdc.noaa.gov/extremes/records/>



**Alabama State Climatologist**

**John R. Christy**

Alabama State Climatologist

The University of Alabama

in Huntsville

christy@nsstc.uah.edu

256-961-7763

**Contact:**

**Phillip Gentry**

UAHuntsville Communications

The University of Alabama in Huntsville

gentry@nsstc.uah.edu

256.961.7618

**Bob Clymer**

Assistant State Climatologist

The University of Alabama in Huntsville

bob.clymer@nsstc.uah.edu

256-961-7771

<http://nsstc.uah.edu/alclimatereport>