

The Alabama Climate Report

Brought to you by the Office of the Alabama Climatologist

Volume 3, Number 11, August 2013



Dr. John Christy, Alabama State Climatologist

Alabama's 2013 summer went into the books as one of the coolest summers in the 131-year record, with an average high temperature that was almost 2° cooler than seasonal norms.

How cool was it?

For the three months of "meteorological" summer no station in Alabama hit 100 degrees. If that holds up (we won't have all of the temperature data for a few days and the folks at the Southeastern Regional Climate Center are keeping an eye out), this summer will be only the fourth time that has happened since 1883. The others were 1965, 1994 and 2001.

It is interesting that all of the summers without a 100 degree day have been in the past 50 years, even though we have many more weather stations collecting data than we did beginning in the late 19th century.

Just because we didn't hit 100 during the summer doesn't mean the state won't see at least one station hit 100 this year. September has seen many 100 degree days in the past, including the state's all-time record high of 112° F on Sept. 5, 1925, in Centreville. A side note: In the three previous years when Alabama didn't hit 100 during the summer, it also didn't reach 100 in September.

(In climate records we use the meteorological summer — June, July and August — rather than the solar summer, which this year ends on Sept. 22.)

Looking at preliminary temperature data from the areas around each of the state's four largest cities, this should be the fifth coolest summer on record.

Overall, this summer was both cool and wet, although the state generally warmed and dried as August came to a close. Statewide, 46 local daily climate records were set for the coolest daytime high temperatures just in August. During the cool spell beginning on the evening of August 14 and ending in early afternoon of August 19, Huntsville experienced an incredible 117 consecutive hours below 80° F.

The statewide rain average for August should be about one inch above normal, although (as always) averages can be deceiving — especially for rainfall. Selma saw its wettest August (11.26") in a climate record that began in 1895. At the same time, several stations got less than two inches of rain for the month. That includes Scottsboro (1.05"), Decatur (1.54") and Russellville (1.80").

Certain crops, such as corn, benefited from the weather, and the average Alabamian's utility bill for electricity and water was probably noticeably lower this year.

Several people have asked if the cool summer will have any influence on or provide any hints about temperatures this winter. Sorry, but no. The fact we had a cool summer doesn't help in predicting the coming winter's average conditions. A quick check shows that there is no relationship between summer's average temperature and that of the following winter.

We have also had some folks speculating on what this cooler than usual summer might mean for some of the long-term trends. In the 131-year record, however, the cool summer of 2013 fits the pattern we've seen. The 10 coolest summers in that record have all occurred since 1960.

However, in climate, what goes up must come down or, in this case, what goes down comes back up. At some point I would expect to see the trend slowly turn to warming for a while to balance out the past 50 years of relatively cool weather. So, it's probably too soon to fill in the backyard pool just yet.

In terms of history, 1967 shows up in most Alabama weather stations as having the coolest summer since reliable weather record keeping started in 1883. Other summers on the cool end of the record include 1997, 1992, 1961, 1989, 1994, 2003, 2004 and, now, 2013.

The 131-year average summer daytime high temperatures for the four regions are:

Mobile:	90.8°
Montgomery:	92.7°
Birmingham:	90.1°
Huntsville:	90.7°

In calculating the average temperatures for each region, the climatologist's office uses only daytime high temperature readings for stations (about 30 per region) within a 50-mile radius of each city center. The Mobile region has a 90-mile radius to compensate for there being fewer nearby stations (no weather stations in the Gulf of Mexico) and for there being fewer early stations near the city. Only daytime highs are used because nighttime low temperatures at some stations have slowly been contaminated by the growth of urban areas around those stations. The data were combined in a process that takes into account station moves and instrument changes.

Coollest Alabama Summers

4-AREA COMPOSITE (121 stations)

1. 1967 87.37°
1992 87.37°
3. 1997 87.67°
4. 1994 87.70°
5. 2013 87.87°
6. 2003 87.90°

7.	1989	88.12°
8.	2004	88.15°
9.	1961	88.22°
10.	2001	88.32
131-yr. avg.		89.65°

BIRMINGHAM

(32 stations)

1.	1967	85.6°
2.	1997	86.5°
3.	1992	86.6°
4.	2013	86.7°
5.	1961	86.8°
6.	2004	86.9°
7.	2003	87.1°
	1974	87.1°
9.	1989	87.2°
	1892	87.2°
131-yr. avg.		90.1°

HUNTSVILLE

(38 stations)

1.	1967	85.3°
2.	1992	85.6°
3.	1976	86.8°
	1989	86.8°
5.	1997	86.9°
6.	1974	87.0°
7.	2004	87.1°
	1979	87.1°
	2013	87.1°
	1961	87.1°
131-yr. avg.		90.7°

MOBILE

(25 stations)

1.	1994	87.6°
2.	2003	88.1°
	1900	88.1°
	1892	88.1°
	1894	88.1°
6.	2013	88.4°
	1992	88.4°
	1997	88.4°
9.	1923	88.5°
10.	1912	88.7°
	2001	88.7°
	1895	88.7°
131-yr. avg.		90.8°

U.S. Drought Monitor

Alabama

August 27, 2013
Valid 7 a.m. EST

Drought Conditions (Percent Area)

	None	D0-D4	D1-D4	D2-D4	D3-D4	D4
Current	100.00	0.00	0.00	0.00	0.00	0.00
Last Week (08/20/2013 map)	100.00	0.00	0.00	0.00	0.00	0.00
3 Months Ago (05/28/2013 map)	86.96	13.04	3.18	0.00	0.00	0.00
Start of Calendar Year (01/01/2013 map)	40.07	59.93	33.67	19.47	9.81	0.00
Start of Water Year (09/25/2012 map)	71.58	28.42	19.42	15.36	8.69	0.00
One Year Ago (08/21/2012 map)	56.05	43.95	27.23	15.36	8.66	0.00

Intensity:

- D0 Abnormally Dry
- D1 Drought - Moderate
- D2 Drought - Severe
- D3 Drought - Extreme
- D4 Drought - Exceptional



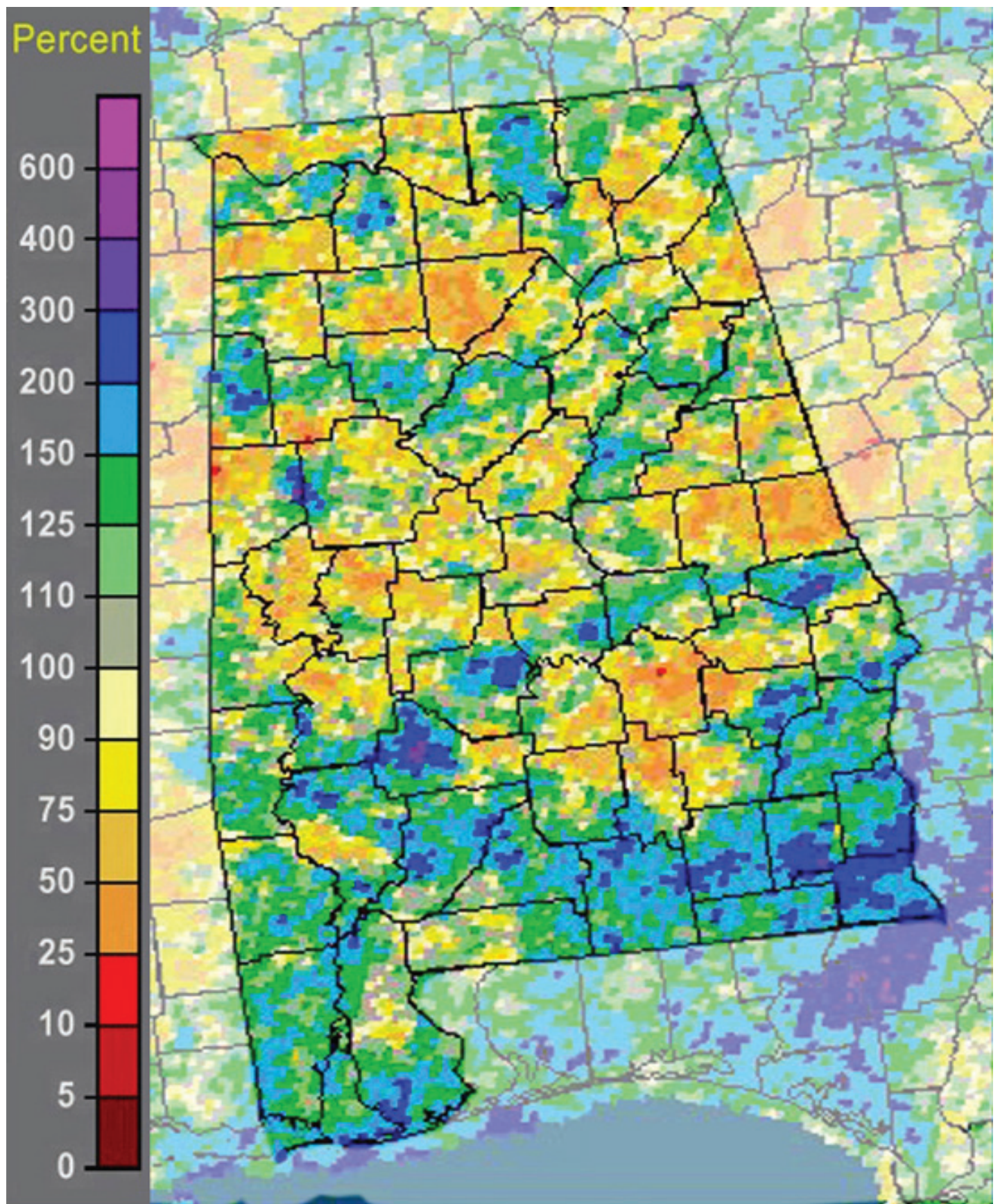
The Drought Monitor focuses on broad-scale conditions. Local conditions may vary. See accompanying text summary for forecast statements.

<http://droughtmonitor.unl.edu>



Released Thursday, August 29, 2013
Anthony Artusa, NOAA/NWS/NCEP/CPC

Percent of Normal Precipitation



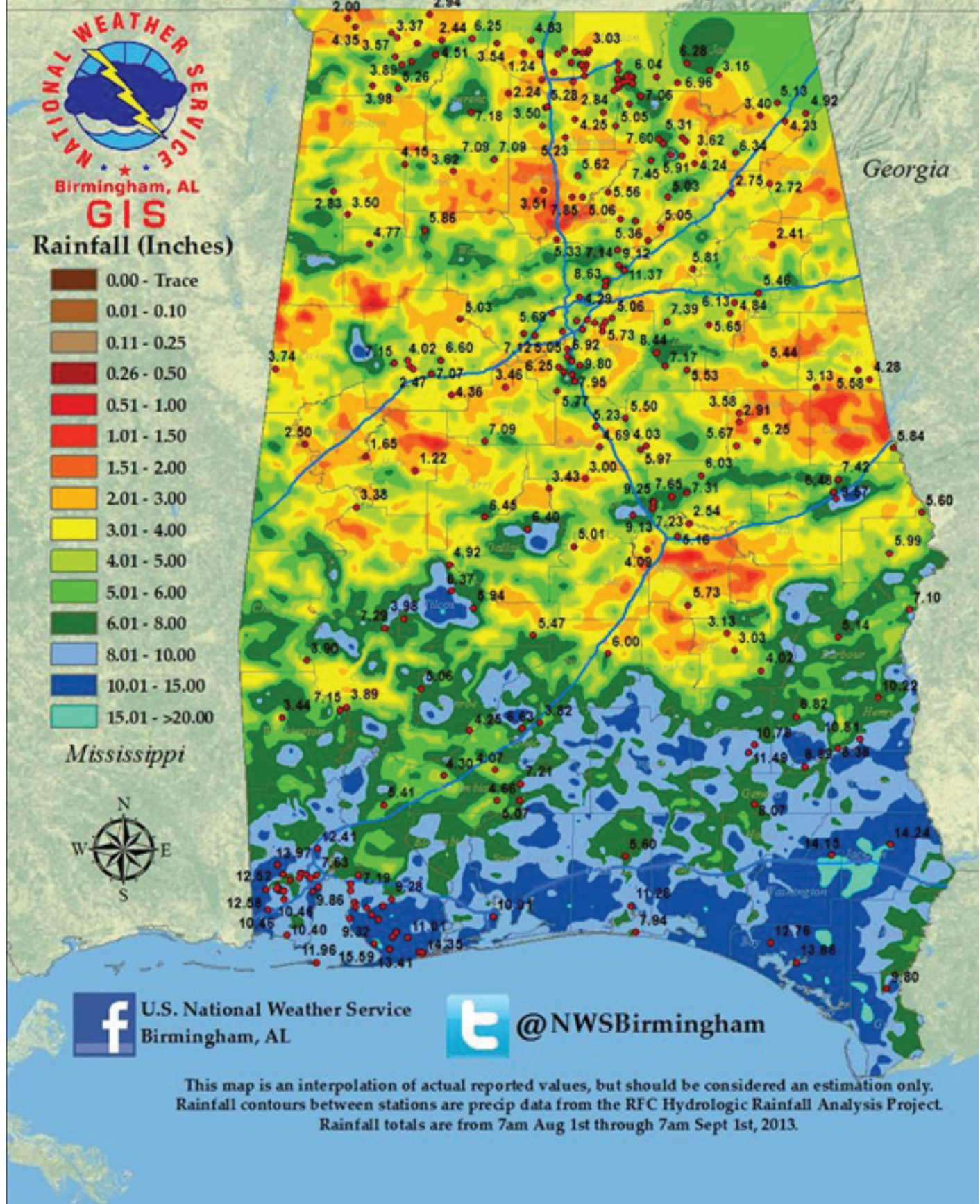
water.weather.gov

Aug. 2013 NWS percentage of normal precipitation

Multi-sensor precipitation estimate

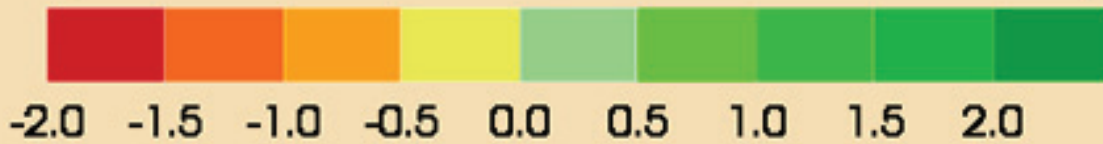
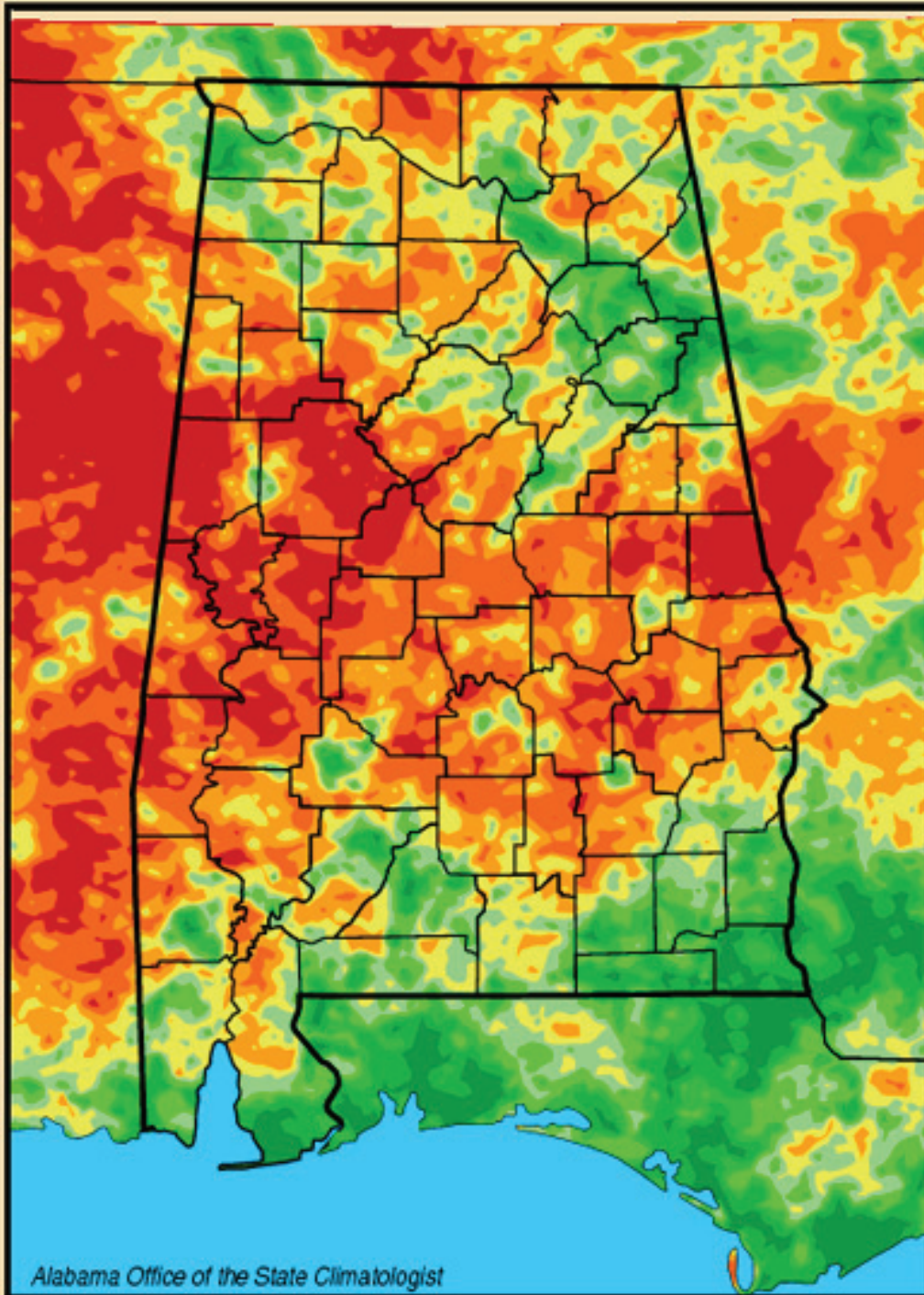
Total Rainfall - August 2013

Source: RFC Estimates, Co-Op Sites, ASOS Observations, and CoCoRaHS Observers
Created by the National Weather Service Forecast Office, Birmingham, Alabama



Lawn and Garden Moisture Index

Lawn-and-Garden Moisture Index for September 3, 2013



Alabama Monthly Climate Summaries

August 2013

	Station Began	August Mean August Norm	August Hi Temp Record Hi	August Low Temp Record Lo	Total Precip. Normal Prec.	Wettest August	Driest August	Heaviest Day Record Day			
Anniston	2/1903	77.6°	94°	8/30/13	61°	8/27/13	5.46"	7.54"	1974	1.68"	8/31/13
		79.5°	106°	8/21/83	50°	8/28/52	3.35°	0.50"	1983	5.57"	8/24/67
Auburn	1/1893	76.4°	91°	8/30/13	61°	8/26/13	4.95°	11.03"	1944	2.70"	8/15/13
		79.7°	106°	8/20/25	54°	8/29/68	4.29°	0.01"	1925	3.73"	8/17/39
Birmingham	1/1930	78.4°	95°	8/31/13	63°	8/27/13	4.29°	8.98"	1998	1.67"	8/8/13
		79.6°	104°	8/8/35	51°	8/31/46	3.48°	0.38"	1989	4.15"	8/2/41
Brewton	4/1977	76.8°	93.2°	8/4/13	61.6°	8/27/13	7.06°	14.69"	1977	1.58"	8/31/13
		79.7°	104°+	8/13/54	53°+	8/30/68	5.64°	1.67"	1980	7.20"	8/4/95
Calera	9/1900	78.4°	93°	8/30/13	63°	8/27/13	7.71°	15.00"	1939	1.64"	8/11-12/13
		78.4°	102°	8/10/56	50°	8/26/66	4.23°	0.33"	1998	5.70"	8/26/08
Clanton	2/1893	76.3°	91.2°	8/10/13	60.1°	8/27/13	4.31°	7.98"	1974	2.11"	8/14/13
		78.3°	105°	8/8/35	51°	8/24/57	3.73°	0.45"	1990	6.75"	8/26/70
Courtland		75.3°	92.5°	8/30-31/13	57.5°	8/15/13	3.92°		M	2.61"	8/8/13
		M	M		M		M	M	M		
Cullman	7/1907	74.3°	90.7°	8/31/13	58.2°	8/26/13	4.28°		M	1.07"	8/9/13
		M	M		M		M	M	M		
Decatur	2/1880	77.1°	96°	8/31/13	58°	8/15/13	1.54°	11.93"	1919	1.00"	8/31/13
		79.8°	107°	8/1/35	52°	8/26/17	3.61°	0.00"	1962	3.95"	8/22/60
Dothan	2/1902	80.0°	94°	8/12/13	65°	8/26-27/13	8.38°	20.85"	1939	2.11"	8/16-17/13
		81.2°	103°	8/26/38	43°	8/24/1902	4.81°	1.47"	1958	4.80"	8/10/31
Fairhope	8/1917	77.7°	92.2°	8/4/13	63.7°	8/27/13	8.41°	14.23"	1984	3.12"	8/18/13
		81.1°	102°	8/30/00	60°+	8/30/92	6.22°	1.25"	1997	5.74"	8/2/84
Gadsden	7/1893	76.9°	91°	8/30/13	61°	8/27/13	3.87°	9.52"	1992	0.61"	8/7/13
		78.9°	105°	8/16/54	52°+	8/12/67	3.65°	0.10"	1983	3.32"	8/6/60
Gainesville	6/1948	77.8°	94.4°	8/31/13	62°	8/27/13	2.20°	8.11"	1992	0.79"	8/13/13
		80.3°	103°+	8/30/00	55°	8/30/86	2.91°	0.37"	1990	4.12"	8/10/70
Greensboro	2/1890	77.2°	94.2°	8/31/13	59.4°	8/27/13	2.52°	7.01"	1993	0.95"	8/3/13
		81.3°	107°	8/26/43	55°	8/22/56	3.30°	1.16"	1989	4.22"	8/31/61
Guntersville	12/1904	76.1°	91.1°	8/30/13	64°	8/26/13	5.98°	10.33"	1981	3.09"	8/6/13
		78.2°	105°	8/21/83	48°	8/29/92	3.36°	0.33"	1990	5.76"	8/30/81
Highland Home	3/1892	76.3°	90.8°	8/30/13	62.2°	8/26/13	4.39°	8.28"	1984	1.40"	8/1/13
		79.0°	103°	8/9/54	56°	8/29/92	4.30°	0.89"	1997	3.65"	8/12/86
Huntsville	1/1959	77.3°	95°	8/31/13	58°	8/15/13	1.81°	9.81"	1986	1.16"	8/31/13
		78.9°	108°	8/8/30	50°	8/10/1954	3.42°	0.58"	1998	4.29"	8/10/86

Alabama Monthly Climate Summaries

August 2013

	Station Began	August Mean August Norm	August Hi Temp Record Hi	August Low Temp Record Lo	Total Precip. Normal Prec.	Wettest August Driest August	Heaviest Day Record Day
Mobile	3/1900	80.8°	95° 8/7/13	66° 8/27/13	9.95"	15.19" 1984	2.90" 8/17-18/13
		81.3°	105° 8/29/2000	57° 8/25/1891	6.20"	1.04" 1997	5.65" 8/1/84
Montgomery	6/1948	80.7°	95° 8/30/13	62° 8/27/13	4.09"	10.43" 1984	1.06" 8/31/13
		81.2°	104°+ 8/24/83	56° 8/29/92	3.63"	0.73" 1997	5.38" 8/2/84
Muscle Shoals	12/1940	78.1°	96° 8/31/13	61° 8/15/13	5.70"	6.78" 1979	2.04" 8/9/13
		79.1°	105°+ 8/16/54	53°+ 8/29/92	2.96"	0.15" 1990	3.43" 8/25/76
Russellville	9/1953	74.5°	92° 8/30/13	54.7° 8/15/13	1.80"	6.83" 1997	0.90" 8/9/13
		77.0°	103°+ 8/30/00	46°+ 8/29/87	2.97"	0.07" 1999	3.69" 8/16/85
Scottsboro	10/1891	74.0°	91.3° 8/31/13	59.7° 8/26/13	1.05"	7.70" 1985	0.32" 8/21/13
		77.7°	105°+ 8/16/54	46° 8/23/82	3.43"	0.74" 1999	4.39" 8/11/01
Selma	1/1895	77.2°	92.5° 8/30/13	59.9° 8/27/13	*11.26"	8.84" 1984	3.96" 8/14/13
		81.0°	105°+ 8/30/54	57°+ 8/30/92	4.01"	0.71" 1990	5.35" 8/15/39
Talladega	2/1888	75.9°	92° 8/30/13	59.1° 8/27/13	3.95"	9.11" 1984	1.69" 8/18/13
		77.3°	103° 8/16/54	46° 8/23/50	3.52"	0.60" 1999	4.30" 8/11/82
Thomasville	9/1891	76.7°	91.8° 8/8/13	58.3° 8/27/13	4.77"	9.01" 1996	1.16" 8/4/13
		80.9°	105°+ 8/31/54	53° 8/22/56	3.88"	1.02" 1989	6.05" 8/14/39
Troy	6/1908	79.7°	95° 8/30/13	61° 8/27/13	3.13"	8.38" 1996	0.88" 8/6/13
		80.2°	106° 8/28/54	55° 8/31/46	3.56"	0.55" 1989	6.75" 8/31/61
Tuscaloosa	6/1948	80.4°	95° 8/31/13	64° 8/27/13	4.02"	8.84" 1970	1.23" 8/13/13
		81.2°	107° 8/10/07	53° 8/22/56	3.80"	0.57" 1953	2.87" 8/10/67
Valley Head	1/1893	73.1°	87.8° 8/28/13	58.7° 8/26/13	5.62"	6.68" 1981	1.84" 8/30/13
		75.3°	105° 8/16/54	46° 8/13/64	3.49"	0.58" 1983	3.61" 8/4/84
Statewide August 2013		77.4°	96° 2 stations	54.7° Russellville	4.93"	20.85" Dothan	3.96" Selma
August Norm		79.5°	108° Huntsville	43° Dothan	3.91"	0.00" Decatur	7.2" Brewton

M: Data is missing or not available

*New Record

#This data is missing this month due to an instrument malfunction

^ This record differs from long-term data in the AOSC climate database:

http://nsssc.uah.edu/alclimate/climate/daily_climate_and_normals.php

Community Collaborative Rain, Hail & Snow Network (CoCoRAHS)

August 2013

	Ave. Total Precip.	# Stations
Autauga	7.46	3
Baldwin	10.26	28
Barbour	n.a.	0
Bibb	4.12	1
Blount	5.66	8
Bullock	n.a.	0
Butler	n.a.	0
Calhoun	4.10	3
Chambers	5.84	1
Cherokee	7.44	1
Chilton	6.45	2
Choctaw	5.57	1
Clarke	4.04	2
Clay	n.a.	0
Cleburne	n.a.	0
Coffee	10.78	1
Colbert	4.81	7
Conecuh	n.a.	0
Coosa	4.44	3
Covington	n.a.	0
Crenshaw	n.a.	0
Cullman	5.63	5
Dale	7.68	2
Dallas	8.89	1
DeKalb	5.67	4
Elmore	6.79	8
Escambia	5.07	1
Etowah	3.65	1
Fayette	3.87	3
Franklin	n.a.	0
Geneva	n.a.	0
Greene	n.a.	0
Hale	n.a.	0
Henry	n.a.	0

	Ave. Total Precip.	# Stations
Houston	8.99	1
Jackson	5.94	6
Jefferson	7.31	12
Lamar	7.96	1
Lauderdale	3.42	13
Lawrence	2.88	1
Lee	6.62	4
Limestone	5.66	12
Lowndes	n.a.	0
Macon	1.16	2
Madison	5.96	62
Marengo	n.a.	0
Marion	3.51	1
Marshall	7.27	11
Mobile	10.78	19
Monroe	3.89	2
Montgomery	6.19	3
Morgan	5.27	8
Perry	n.a.	0
Pickens	1.43	1
Pike	n.a.	0
Randolph	6.40	1
Russell	5.81	2
St. Clair	7.30	3
Shelby	6.32	22
Sumter	n.a.	0
Talladega	6.70	6
Tallapoosa	3.53	5
Tuscaloosa	6.21	3
Walker	n.a.	0
Washington	7.15	1
Wilcox	4.96	2
Winston	5.48	2

**Normal
August
Precipitation***

Abbeville	4.52"
Alberta	4.16"
Alex City	4.40"
Aliceville.....	3.32"
Andalusia.....	5.38"
Ashland.....	4.22"
Athens	3.33"
Bay Minette.....	6.60"
Bessemer ...	3.70"
Billingsley.....	4.30"
Centreville WSMO.	4.49"
Chatom	4.76"
Claiborne L&D.	4.28"
Clayton	4.53"
Dauphin Isl.	7.12"
Elba	4.70"
Eufaula WR.....	3.81"
Evergreen	4.73"
Fayette	4.71"
Geneva 2.....	5.07"
Greenville	4.86"
Haleyville	4.21"
Hamilton 3S	4.04"
Heflin	3.39"
Hurtsboro	3.78"
Jasper	3.53"
Lafayette	3.76"
Livingston	3.72"
Melvin	4.40"
Milstead	4.13"
Moulton	3.77"
Oneonta	4.08"
Perryville	3.53"
Plantersville	4.18"
Rock Mills	3.91"
Rockford	4.20"
Sylacauga	4.12"
Union Springs... ..	4.64"
Uniontown	3.92"
Vernon	3.40"
Warrior L&D ...	3.82"
Wetumpka	4.47"

*Southeast Regional Climate Center
www.serrc.com

New Local Climate Records¹

August 2013

Precipitation, Daily

	Period of Record	New Record	Previous Record	Previous Year					
1 August 2013					15 August 2013				
BANKHEAD LOCK & DAM	56	2.00 in	1.72 in	2001	MILLERS FERRY L&D	32	1.00 in	0.87 in	1982
CAHABA PUMP HOUSE	31	2.87 in	2.45 in	2012	OPELIKA	56	3.60 in	1.02 in	1973
CHILDERSBURG WTR PLT	56	1.92 in	0.59 in	1958	18 August 2013				
HOLT LOCK & DAM	32	2.34 in	1.17 in	1982	COFFEEVILLE L&D	30	1.35 in	1.31 in	2007
JASPER	53	1.15 in	0.62 in	2003	DAUPHIN ISLAND #2	38	4.64 in	0.65 in	1986
LOGAN MARTIN DAM	31	2.46 in	0.82 in	1982	ENTERPRISE 4 W	47	1.30 in	1.15 in	1969
SAND MT SUBSTATION	64	1.48 in	1.27 in	1996	GENEVA NO 2	37	2.00 in	0.78 in	1999
WALLACE 2 E	72	2.30 in	1.55 in	1996	LOGAN MARTIN DAM	31	0.49 in	0.45 in	1986
2 August 2013					19 August 2013				
JONES BLUFF L&D	32	1.74 in	1.37 in	1984	CHILDERSBURG WTR PLT	56	1.43 in	1.27 in	1991
4 August 2013					FAIRHOPE 2 NE	96	1.71 in	1.65 in	1979
BERRY 3 NW	73	0.23 in	0.12 in	2012	HEADLAND	63	1.28 in	0.74 in	1953
JASPER	53	1.82 in	0.80 in	2003	JONES BLUFF L&D	32	1.15 in	1.14 in	1981
LOGAN MARTIN DAM	31	1.08 in	0.05 in	1989	MITCHELL DAM	76	2.00 in	0.73 in	1969
6 August 2013					WEISS DAM	31	0.96 in	0.35 in	2012
MOBILE DOWNTOWN AP	65	1.93 in	1.43 in	1953	21 August 2013				
7 August 2013					CLAYTON	84	1.23 in	1.20 in	1955
GUNTERSVILLE	108	3.16 in	1.36 in	1945	ENTERPRISE 4 W	47	1.30 in	0.84 in	2004
MILLERS FERRY L&D	32	2.00 in	1.78 in	2001	EUFULA WILDLIFE REF	46	1.22 in	0.76 in	2000
8 August 2013					23 August 2013				
SAND MT SUBSTATION	64	1.82 in	1.49 in	1953	ADDISON	75	0.61 in	0.00 in	2012
9 August 2013					BERRY 3 NW	73	0.06 in	0.05 in	2005
MOULTON 2	56	1.71 in	1.69 in	2011	CARBON HILL 4SE	75	2.15 in	1.78 in	2008
OPELIKA	56	0.88 in	0.70 in	1965	ENTERPRISE 4 W	47	1.50 in	1.05 in	1992
10 August 2013					25 August 2013				
JONES BLUFF L&D	32	1.55 in	1.22 in	2012	ENTERPRISE 4 W	47	1.30 in	0.74 in	1991
13 August 2013					31 August 2013				
BELLE MINA 2 N	63	0.76 in	0.67 in	1992	FORT PAYNE	79	2.41 in	0.84 in	1937
BERRY 3 NW	73	1.04 in	0.48 in	2008	GENEVA NO 2	38	1.00 in	0.52 in	1991
WEISS DAM	31	0.28 in	0.26 in	2008					
14 August 2013									
COFFEEVILLE L&D	30	1.07 in	0.64 in	1987					
JONES BLUFF L&D	32	1.00 in	0.67 in	2003					
MILLERS FERRY L&D	32	1.00 in	0.98 in	1992					

New Local Climate Records¹

August 2013

Coollest Maximum High Temperature, Daily

	Period of Record	New Record	Previous Record	Previous Date					
7 August 2013					GENEVA NO 2	36	72.0°F	84.9°F	2009
GUNTERSVILLE	56	79.0°F	82.0°F	2003	GREENSBORO	117	77.0°F	81.0°F	1932
15 August 2013					HAMILTON 3 S	51	79.0°F	81.0°F	1977
GREENSBORO	117	77.0°F	78.1°F	1939	MOULTON 2	55	71.1°F	81.0°F	2012
SYLACAUGA 4 NE	51	77.0°F	78.1°F	1991	OPELIKA	52	73.0°F	81.0°F	1979
16 August 2013					ROBERTSDALE	76	75.0°F	81.0°F	2009
ALEXANDER CITY	42	72.0°F	80.1°F	1992	THOMASVILLE	116	73.0°F	82.0°F	1897
CODEN	50	81.0°F	82.0°F	1967	19 August 2013				
GUNTERSVILLE	57	77.0°F	78.1°F	1964	BREWTON 3 SSE	86	79.0°F	80.1°F	1927
MARION JUNCTION 2 NE	63	82.9°F	82.9°F	1992	CODEN	51	79.0°F	82.9°F	1965
OPELIKA	51	73.0°F	81.0°F	1991	DAUPHIN ISLAND #2	38	82.9°F	84.9°F	1992
SYLACAUGA 4 NE	51	75.9°F	82.0°F	2004	DEMOPOLIS LOCK & DAM	60	75.0°F	78.1°F	2001
TALLADEGA	113	75.0°F	75.0°F	1939	ENTERPRISE 4 W	39	81.0°F	82.9°F	1969
WETUMPKA	65	75.0°F	75.9°F	1939	FAIRHOPE 2 NE	94	78.1°F	82.0°F	1965
17 August 2013					GAINESVILLE LOCK	53	77.0°F	80.1°F	1973
ATMORE	51	82.0°F	82.9°F	2002	GENEVA NO 2	36	81.0°F	84.0°F	1994
DEMOPOLIS LOCK & DAM	60	78.1°F	82.0°F	1992	GREENVILLE	83	75.9°F	81.0°F	1969
ENTERPRISE 4 W	39	81.0°F	82.9°F	1994	GUNTERSVILLE	57	77.0°F	81.0°F	1981
EVERGREEN	90	79.0°F	80.1°F	1967	HAMILTON 3 S	51	78.1°F	81.0°F	1981
GENEVA NO 2	36	79.0°F	82.0°F	1992	HEADLAND	61	79.0°F	84.9°F	2008
JASPER	46	73.0°F	78.1°F	1967	SYLACAUGA 4 NE	50	73.9°F	84.0°F	1982
MOULTON 2	55	73.0°F	81.0°F	1989	TALLADEGA	113	75.9°F	80.1°F	1905
RUSSELLVILLE NO 2	57	75.9°F	78.1°F	1992	VERNON	54	79.0°F	82.0°F	1981
SCOTTSBORO	111	72.0°F	79.0°F	1964	24 August 2013				
THOMASVILLE	116	80.1°F	81.0°F	1897	CODEN	50	79.0°F	81.0°F	1958
18 August 2013					DAUPHIN ISLAND #2	37	80.1°F	82.0°F	2009
BREWTON 3 SSE	84	75.0°F	80.1°F	2009	25 August 2013				
DAUPHIN ISLAND #2	38	82.9°F	84.0°F	1992	DAUPHIN ISLAND #2	36	79.0°F	82.9°F	2009
DEMOPOLIS LOCK & DAM	61	77.0°F	78.1°F	2009	26 August 2013				
ENTERPRISE 4 W	39	72.0°F	82.9°F	1971	DAUPHIN ISLAND #2	37	82.0°F	84.0°F	2008

Minimum Low Temperature, Daily

	Period of Record	New Record	Previous Record	Previous Year
27 August 2013				
GREENVILLE	84	59.0°F	60.1°F	1952
ALEXANDER CITY	42	60.1°F	62.1°F	1994
BREWTON 3 ENE	36	61.0°F	62.1°F	1997

Maximum High Temperature, Daily

	Period of Record	New Record	Previous Record	Previous Hottest Day
5 Aug. 2013				
DAUPHIN ISLAND #2	38	93.9°F	93.0°F	1978

¹ <http://lwf.ncdc.noaa.gov/extremes/records/>

* This record differs from long-term data in the AOSC climate database:
http://nsstc.uah.edu/alclimate/climate/daily_climate_and_normals.php

Alabama State Climatologist

John R. Christy

Alabama State Climatologist

The University of Alabama

in Huntsville

christy@nsstc.uah.edu

256-961-7763

Contact:

Phillip Gentry

UAHuntsville Communications

The University of Alabama in Huntsville

gentry@nsstc.uah.edu

256.961.7618

Bob Clymer

Assistant State Climatologist

The University of Alabama in Huntsville

bob.clymer@nsstc.uah.edu

256-961-7771

<http://nsstc.uah.edu/alclimatereport>