

The Alabama Climate Report

Brought to you by the Office of the Alabama Climatologist

Volume 3, Number 9, June 2013



Dr. John Christy, Alabama State Climatologist

As June drew to a close and July got underway, quite a bit of attention was focused out west. A flurry of record or near record high temperatures in Las Vegas, Death Valley and elsewhere in the western states occurred due to a stalled high-pressure system in an area that is already normally hot and dry.

Fortunately, we are on the cool side of that system, with relatively pleasant temperatures, occasional showers and the intermittent downpours. Rainfall in June was typical for summer: Spotty. Over small distances, total rainfall for the month could vary by as much as 100 percent.

At the Huntsville NWS airport, for instance, total rainfall for the month was only 2.21 inches. At my house, about 12 miles away, I saw 4.96 inches. That's just the nature of pop-up storms. I might get four or five inches in an afternoon and watch my yard wash down the street, while someone a few blocks away gets nothing. Often in summer, the upper air steering winds are simply stagnant, so storms grow and die without moving much.

Some of the data collected by CoCoRaHS volunteers in June backs that up. For instance, three gauges in Auburn reported 4.66, 4.69 and 6.04 inches, while a rain gauge in Tuskegee got 9.05. Volunteers in Pelham and Bessemer reported 4.33 and 4.63 inches in rain in June, while volunteers in Trussville saw 8.91, 9.1, 11.16 and 11.72 inches!

But my favorite example from June was three volunteers in and around Wetumpka. The three Wetumpka stations saw 4.38 inches in 30 reports, 8.12 inches in 30 reports, and 12.29 inches in eleven reports (evidently this last volunteer reported only when it rained – which reminds me to remind our CoCoRaHS volunteers to always file a report even if the total is zero!)

We are half way through the year now, and our 6-month rainfall totals around the state also reflect a wide range of reports. Anniston is 12.61 inches ahead of normal for the first six months of 2013, while Dothan is 10.48 inches below normal.

Cities around the state and their six-month rainfall totals — from wettest to driest — include:

| | |
|---------------|---------------|
| Anniston | 39.62" +12.61 |
| Birmingham | 39.17" +10.82 |
| Shelby Co. AP | 33.70" +5.24 |
| Huntsville | 31.33" +2.67 |

| | |
|---------------|---------------|
| Montgomery | 29.56" +2.05 |
| Troy | 29.11" +1.45 |
| Muscle Shoals | 29.24" +0.98 |
| Mobile | 32.65" -0.30 |
| Tuscaloosa | 27.64" -0.53 |
| Dothan | 17.48" -10.48 |

If you look at the actual rainfall amounts, that means there has been over 22" difference between the amount of rain that fell on Anniston and Dothan from January through June. Perhaps more surprising, there has been an 11.6" difference between Troy and Dothan, which are only 56 miles apart. By the end of the year, we shall see if Mother Nature balances these differences out.

- John Christy

Drought Monitor

U.S. Drought Monitor

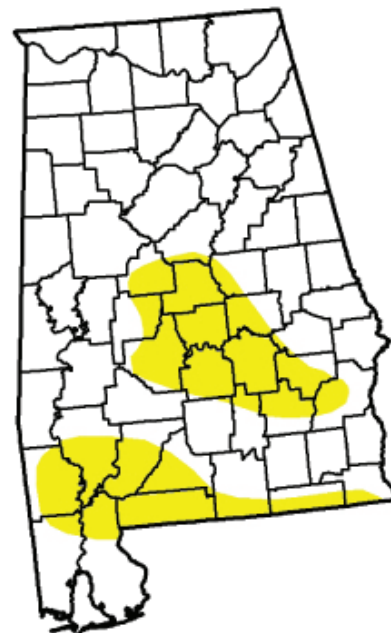
Alabama

June 25, 2013
Valid 7 a.m. EST

| | Drought Conditions (Percent Area) | | | | | |
|---|-----------------------------------|-------|-------|-------|-------|------|
| | None | D0-D4 | D1-D4 | D2-D4 | D3-D4 | D4 |
| Current | 77.70 | 22.30 | 0.00 | 0.00 | 0.00 | 0.00 |
| Last Week (06/18/2013 map) | 73.53 | 26.47 | 0.00 | 0.00 | 0.00 | 0.00 |
| 3 Months Ago (03/26/2013 map) | 94.59 | 5.41 | 0.00 | 0.00 | 0.00 | 0.00 |
| Start of Calendar Year (01/01/2013 map) | 40.07 | 59.93 | 33.67 | 19.47 | 9.81 | 0.00 |
| Start of Water Year (09/25/2012 map) | 71.58 | 28.42 | 19.42 | 15.36 | 8.69 | 0.00 |
| One Year Ago (06/19/2012 map) | 42.59 | 57.41 | 26.43 | 17.55 | 12.58 | 1.06 |

Intensity:

| | |
|---|--|
|  D0 Abnormally Dry |  D3 Drought - Extreme |
|  D1 Drought - Moderate |  D4 Drought - Exceptional |
|  D2 Drought - Severe | |



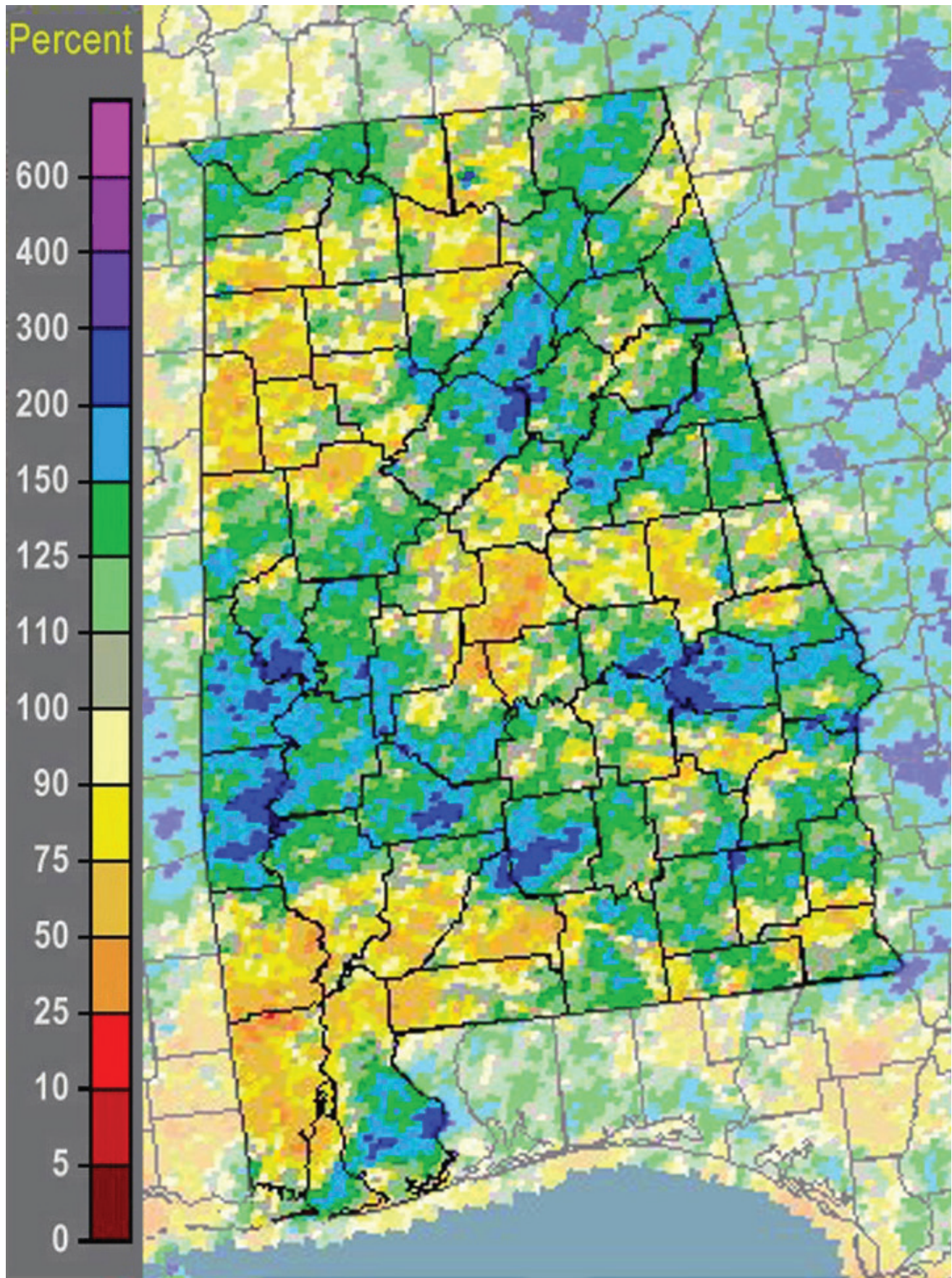
The Drought Monitor focuses on broad-scale conditions. Local conditions may vary. See accompanying text summary for forecast statements.



<http://droughtmonitor.unl.edu>

Released Thursday, June 27, 2013
Mark Svoboda, National Drought Mitigation Center

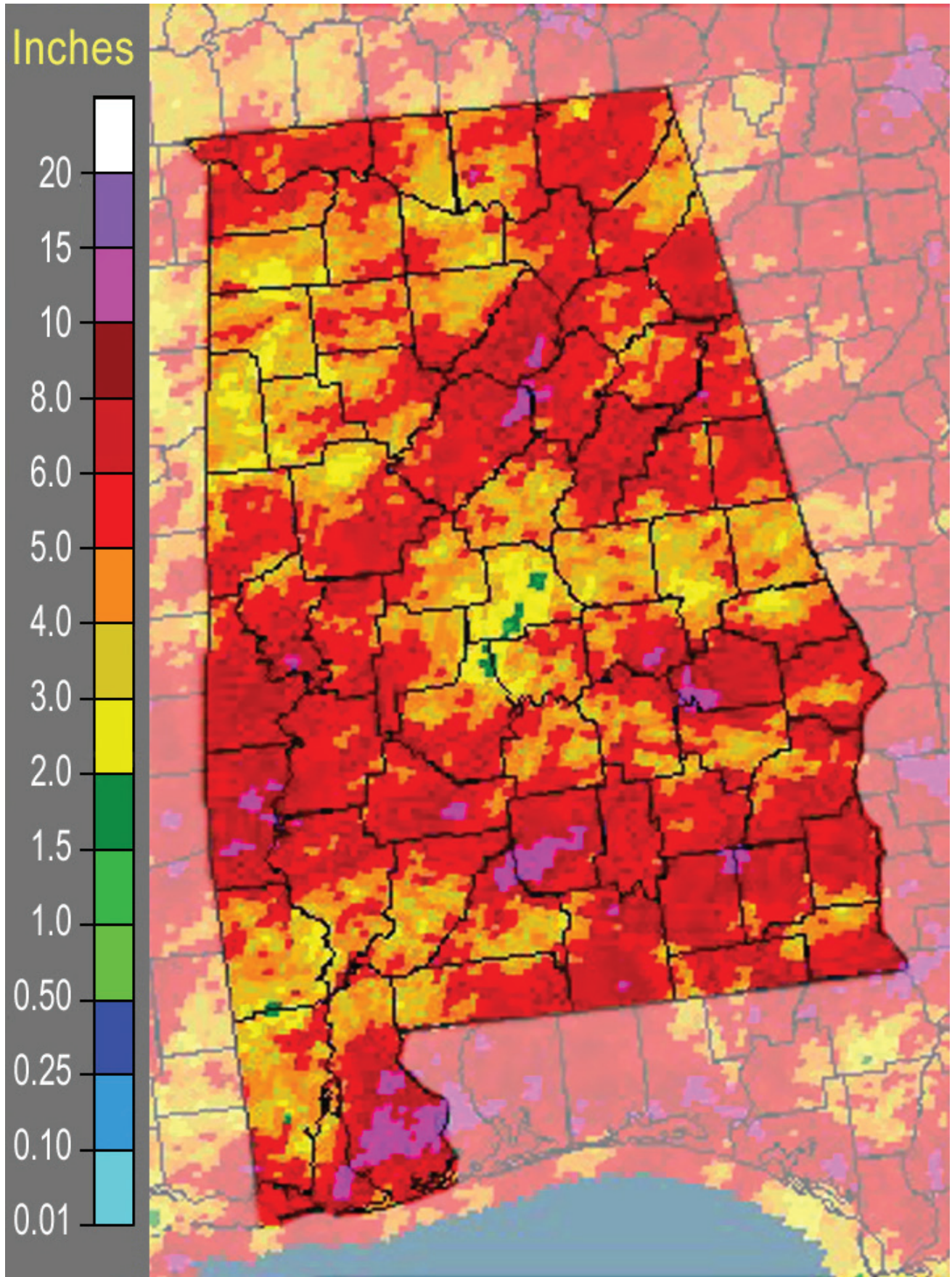
Percent of Normal Precipitation



water.weather.com

June 2013 NWS percentage of normal precipitation

Multi-sensor precipitation estimate

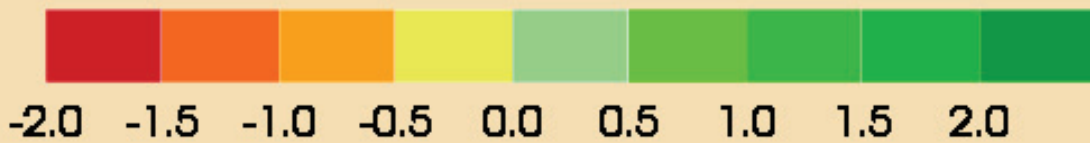
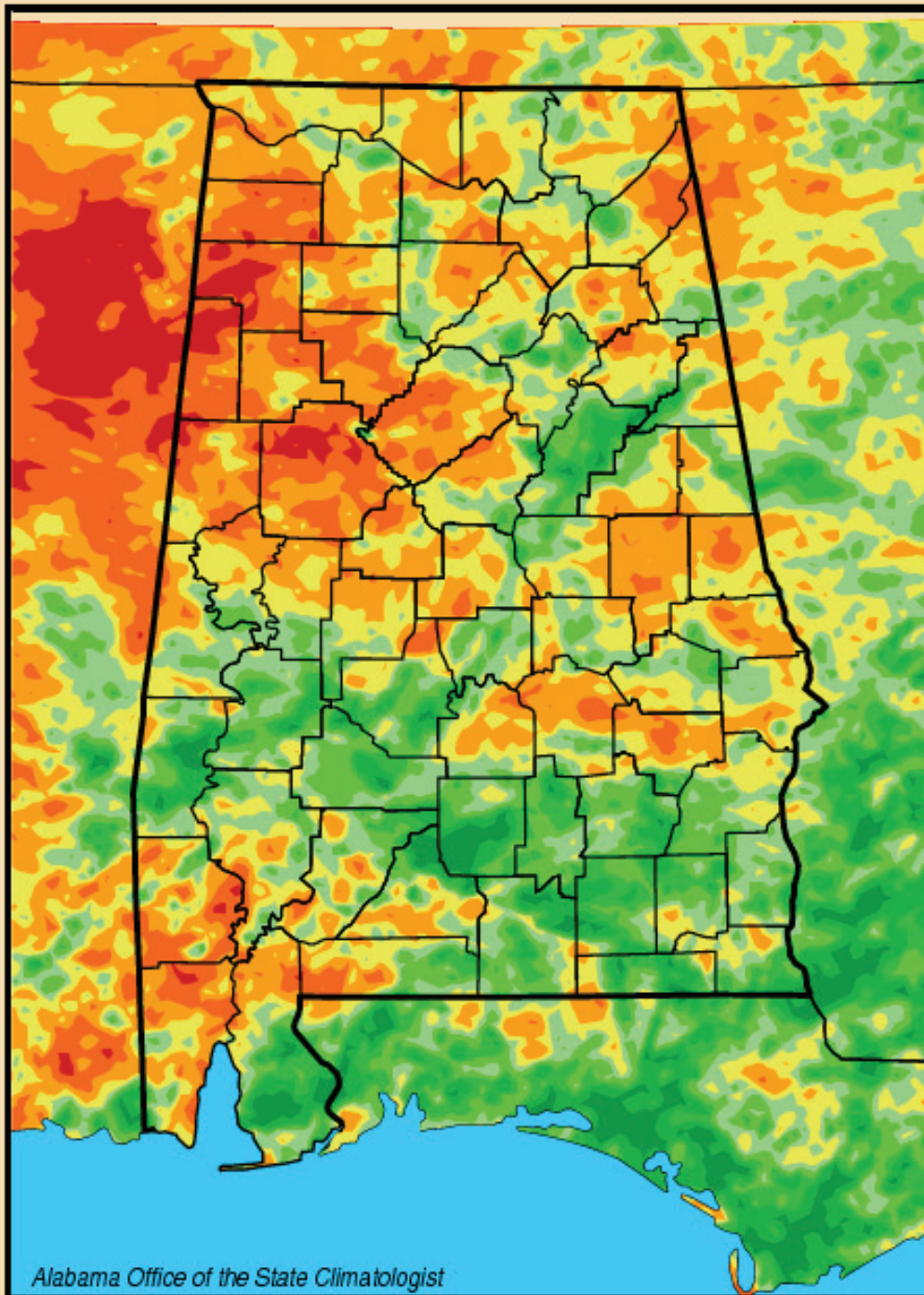


water.weather.gov

June 2013 NWS multi-sensor precipitation estimate

Lawn and Garden Moisture Index

Lawn-and-Garden Moisture Index for July 1, 2013



Alabama Monthly Climate Summaries

Alabama Monthly Climate Summaries

June 2013

| | Station Began | June Mean June Norm | June Hi Temp Record Hi | June Low Temp Record Lo | Total Precip. Normal Prec. | Wettest June Driest June | Heaviest Day Record Day |
|---------------|---------------|------------------------|---------------------------|----------------------------|-------------------------------|-----------------------------|----------------------------|
| Anniston | 2/1903 | 77.8° | 92° 6/12/13 | 63° 6/15/13 | 6.69" | 9.27" 1982 | 2.25" 6/24-25/13 |
| | | 76.6° | 102°+ 6/27/54 | 42° 6/1/72 | 4.14" | .00" 1988 | 3.60" 6/4/50 |
| Auburn | 1/1893 | 77.7° | 91° 6/12/13 | 66° 6/22/13 | 2.67" | 8.64" 1909 | .52" 6/28/13 |
| | | 78.3° | 107° 6/19/33 | 39° 6/3/56 | 4.17" | .57" 1931 | 3.64" 6/5/28 |
| Birmingham | 1/1930 | 78.8° | 94° 6/12/13 | 64° 6/15/13 | 8.66" | 9.04" 1999 | 3.57" 6/4-5/13 |
| | | 76.4° | 106° 6/29/31 | 42° 6/1/66 | 3.78" | .79" 1988 | 3.85" 6/23/57 |
| Brewton | 4/1977 | 77.7° | 93.2° 6/13/13 | 64.4° 6/8/13 | 6.07" | 13.80" 1989 | 1.54" 6/2/13 |
| | | 77.3° | 109° 6/18/33 | 40° 6/3/56 | 5.97" | 1.90" 1998 | 6.45" 6/3/70 |
| Calera | 9/1900 | 78.5° | 92° 6/12;16/13 | 65° 6/15/13 | 4.70" | 14.58" 2003 | 1.54" 6/18/13 |
| | | 76.0° | 103° 6/29/69 | 37° 6/1/66 | 4.15" | .06" 1902 | 5.04" 6/12/42 |
| Clanton | 2/1893 | 77.0° | 93.2° 6/12/13 | 60.1° 6/15/13 | 2.91" | 11.82" 1991 | .72" 6/27/13 |
| | | 76.0° | 106° 6/19/36 | 42° 6/3/56 | 4.16" | .69" 1988 | 7.82" 6/26/91 |
| Courtland | | 75.7° | 92.7° 6/27/13 | 58.3° 6/4/13 | 5.87" | M | 1.44" 6/17/13 |
| | | M | M | M | M | M | M |
| Cullman | 7/1907 | 74.7° | 91.9° 6/27/13 | 56.1° 6/15/13 | 2.78" | M | 1.01" 6/10/13 |
| | | M | M | M | M | M | M |
| Decatur | 2/1880 | 78.0° | 96° 6/12/13 | 59° 6/4;15/13 | 3.39" | 11.07" 1900 | 1.45" 6/17-18/13 |
| | | 77.9° | 108° 6/10/14 | 44° 6/3/56 | 3.58" | .20" 1931 | 3.06" 6/4/34 |
| Dothan | 2/1902 | 80.1° | 96° 6/12/13 | 65° 6/8/13 | 4.59" | 8.52" 1942 | 1.19" 6/17-18/13 |
| | | 80.1° | 104° 6/27/52 | 49° 6/3/56 | 4.31" | 1.10" 1945 | 3.78" 6/22/49 |
| Fairhope | 8/1917 | 78.6° | 90.5° 6/28/13 | 64.8° 6/6/13 | 8.48" | 18.52" 1989 | 1.57" 6/10/13 |
| | | 79.2° | 100°+ 6/11/54 | 52° 6/1/84 | 5.94" | .71" 1977 | 7.80" 6/9/89 |
| Gadsden | 7/1893 | 73.5° | 89.4° 6/12/13 | 56.8° 6/15/13 | 5.45" | 10.30" 1994 | 1.35" 6/16/13 |
| | | 75.8° | 102° 6/27/54 | 42° 6/3/56 | 4.34" | .13" 1988 | 3.10" 6/25/99 |
| Gainesville | 6/1948 | 77.5° | 94.8° 6/27/13 | 62.4° 6/15/13 | 5.02" | 9.56" 1983 | 1.63" 6/28/13 |
| | | 77.2° | 101° 6/24/77 | 42° 6/1/84 | 4.07" | .61" 1988 | 3.49" 6/13/87 |
| Greensboro | 2/1890 | 77.2° | 92.7° 6/27/13 | 61.5° 6/15/13 | 6.01" | 10.25" 1999 | 1.21" 6/5/13 |
| | | 78.9° | 105°+ 6/29/54 | 41° 6/1/66 | 3.72" | .66" 1988 | 5.50" 6/3/70 |
| Guntersville | 12/1904 | 76.3° | 91.6° 6/12/13 | 64.2° 6/15/13 | 5.85" | 9.94" 1999 | 1.14" 6/17/13 |
| | | 75.4° | 103° 6/26/88 | 44° 6/4/56 | 3.85" | .19" 1988 | 4.20°+ 6/19/76 |
| Highland Home | 3/1892 | 76.5° | 90.5° 6/28/13 | 63.3° 6/8/13 | 9.29" | 12.90" 1983 | 2.06" 6/19/13 |
| | | 76.9° | 104°+ 6/7/85 | 45° 6/1/84 | 4.70" | 1.22" 1971 | 4.30" 6/3/70 |
| Huntsville | 1/1959 | 78.9° | 97° 6/12/13 | 60° 6/4/13 | 2.21" | 14.99" 1989 | 1.02" 6/17-18/13 |
| | | 76.5° | 101° 6/29/69 | 45° 6/1/72 | 4.10" | .17" 1988 | 4.46" 6/14/69 |

Alabama Monthly Climate Summaries

June 2013

| | Station Began | June Mean June Norm | June Hi Temp Record Hi | June Low Temp Record Lo | Total Precip. Normal Prec. | Wettest June Driest June | Heaviest Day Record Day |
|---------------------|---------------|------------------------|--------------------------------|-----------------------------|-------------------------------|-----------------------------|--------------------------------|
| Mobile | 3/1900 | 81.0° 79.3° | 95° 6/28/13 102*+ 6/29/54 | 65° 6/6/13 49° 6/1/84 | 4.20* 5.01* | 11.00* 1982 1.26* 1977 | 1.14* 6/18/13 6.08* 6/20/61 |
| Montgomery | 6/1948 | 81.1° 78.9° | 96° 6/13/13 105° 6/28/54 | 65° 6/8/13 49*+ 6/1/84 | 3.85* 4.13* | 14.44* 1989 .33* 1979 | 1.14* 6/5/13 3.91* 6/28/57 |
| Muscle Shoals | 12/1940 | 74.7° 76.5° | 92.5° 6/12/13 104° 6/28/52 | 56.8° 6/4/13 44° 6/1/72 | 4.96* 4.90* | 13.43* 1989 1.03* 1988 | 1.83* 6/17/13 5.60* 6/12/92 |
| Russellville | 9/1953 | 74.4° 73.7° | 92.7° 6/27/13 102° 6/28/54 | 54.3° 6/4/13 36*+ 6/4/69 | 4.24* 4.23* | 12.71* 1997 .50* 1988 | 1.08* 6/9/13 3.30* 6/8/94 |
| Scottsboro | 10/1891 | 74.2° 75.5° | 91.4° 6/12/13 107*+ 6/29/31 | 56.3° 6/4/13 39° 6/3/56 | 5.78* 4.38* | 9.08* 1989 .65* 1988 | 1.30* 6/10/13 3.72* 6/29/41 |
| Selma | 1/1895 | 77.8° 80.0° | 94.3° 6/13/13 108° 6/28/54 | 61.5° 6/15/13 42° 6/1/84 | 4.13* 4.13* | 10.32* 1989 .34* 1988 | 1.00* 6/24/13 3.65* 6/25/91 |
| Talladega | 2/1888 | 76.4° 77.0° | 92.3° 6/12/13 102° 6/27/54 | 61.2° 6/15/13 39° 6/1/72 | 7.55* 4.64* | 11.97* 1989 .32* 1988 | 2.54* 6/16/13 4.60* 6/22/97 |
| Thomasville | 9/1891 | 77.5° 78.7° | 91.6° 6/28/13 108° 6/26/30 | 61° 6/15/13 46*+ 6/1/84 | 3.97* 4.92* | 12.69* 1989 .93* 1988 | 1.17* 6/17/13 3.98* 6/29/43 |
| Troy | 6/1908 | 76.8° 77.5° | 93° 6/28/13 105° 6/19/33 | 62.1° 6/8/13 43° 6/9/00 | 4.00* 4.78* | 12.63* 1989 1.04* 1986 | .88* 6/28/13 4.36* 6/4/70 |
| Tuscaloosa | 6/1948 | 79.8° 78.7° | 96° 6/27/13 105° 6/28/52 | 63° 6/15/13 45° 6/3/56 | 5.68* 4.20* | 11.98* 1989 1.22* 1988 | 1.72* 6/5/13 3.41* 6/18/63 |
| Valley Head | 1/1893 | 73.3° 72.2° | 89.4° 6/12/13 101° 6/28/52 | 56.3° 6/4/13 35° 6/1/66 | 3.52* 4.33* | 9.19* 1976 .54* 1988 | 1.05* 6/9/13 3.08* 6/10/61 |
| Statewide June 2013 | | 77.3° | 97° Huntsville | 54.3° Russellville | 5.15° | 18.52* Fairhope | 3.21* Gadsden |
| June Norm | | 77.2° | 109° Brewton | 35° Valley Head | 4.41° | 0.00° Anniston | 9.60° Brewton |

M: Data is missing or not available

*New Record

#This data is missing this month due to an instrument malfunction

^ This record differs from long-term data in the AOSC climate database:

http://nsstc.uah.edu/alclimate/climate/daily_climate_and_normals.php

Volunteer Precipitation Reports

Community Collaborative Rain, Hail & Snow Network (CoCoRAHS)

June 2013

| | Ave. Total Precip. | # Stations |
|-----------|--------------------|------------|
| Autauga | 4.98 | 3 |
| Baldwin | 7.47 | 29 |
| Barbour | n.a. | 0 |
| Bibb | 3.39 | 1 |
| Blount | 6.70 | 8 |
| Bullock | n.a. | 0 |
| Butler | n.a. | 0 |
| Calhoun | 5.41 | 3 |
| Chambers | 5.35 | 1 |
| Cherokee | 4.25 | 1 |
| Chilton | 3.12 | 2 |
| Choctaw | 5.50 | 1 |
| Clarke | 3.78 | 2 |
| Clay | n.a. | 0 |
| Cleburne | n.a. | 0 |
| Coffee | 4.18 | 1 |
| Colbert | 4.65 | 8 |
| Conecuh | n.a. | 0 |
| Coosa | 3.03 | 2 |
| Covington | n.a. | 0 |
| Crenshaw | n.a. | 0 |
| Cullman | 3.20 | 5 |
| Dale | 6.39 | 2 |
| Dallas | 5.34 | 1 |
| DeKalb | 3.95 | 5 |
| Elmore | 7.60 | 7 |
| Escambia | 4.92 | 1 |
| Etowah | 6.39 | 1 |
| Fayette | 3.94 | 2 |
| Franklin | n.a. | 0 |
| Geneva | n.a. | 0 |
| Greene | n.a. | 0 |
| Hale | n.a. | 0 |
| Henry | n.a. | 0 |

| | Ave. Total Precip. | # Stations |
|------------|--------------------|------------|
| Houston | 7.79 | 1 |
| Jackson | 6.55 | 6 |
| Jefferson | 7.75 | 12 |
| Lamar | 2.26 | 1 |
| Lauderdale | 5.73 | 12 |
| Lawrence | 2.84 | 1 |
| Lee | 5.31 | 4 |
| Limestone | 4.65 | 13 |
| Lowndes | n.a. | 0 |
| Macon | 9.05 | 1 |
| Madison | 4.53 | 61 |
| Marengo | n.a. | 0 |
| Marion | 2.77 | 1 |
| Marshall | 5.22 | 12 |
| Mobile | 5.09 | 18 |
| Monroe | 3.50 | 2 |
| Montgomery | 5.25 | 4 |
| Morgan | 3.28 | 10 |
| Perry | n.a. | 0 |
| Pickens | n.a. | 0 |
| Pike | n.a. | 0 |
| Randolph | 6.65 | 1 |
| Russell | 5.85 | 2 |
| St. Clair | 4.73 | 4 |
| Shelby | 4.46 | 20 |
| Sumter | n.a. | 0 |
| Talladega | 7.57 | 6 |
| Tallapoosa | 2.81 | 6 |
| Tuscaloosa | 4.71 | 5 |
| Walker | 3.54 | 0 |
| Washington | 1.65 | 1 |
| Wilcox | 5.10 | 2 |
| Winston | 4.72 | 2 |

Normal

June

Precipitation*

| | |
|---------------------|-------|
| Abbeville | 4.81" |
| Alberta | 3.76" |
| Alex City | 3.85" |
| Aliceville | 3.38" |
| Andalusia | 4.92" |
| Ashland | 4.42" |
| Athens | 3.95" |
| Bay Minette | 5.32" |
| Bessemer | 3.89" |
| Billingsley..... | 4.10" |
| Centreville WSMO. | 4.06" |
| Chatom | 4.62" |
| Claiborne L&D..... | 4.39" |
| Clayton | 4.26" |
| Dauphin Isl. | 4.90" |
| Elba | 4.74" |
| Eufaula WR..... | 4.11" |
| Evergreen | 5.06" |
| Fayette | 4.68" |
| Geneva 2..... | 4.98" |
| Greenville | 4.39" |
| Haleyville | 4.20" |
| Hamilton 3S | 4.27" |
| Heflin | 4.35" |
| Hurtsboro | 3.36" |
| Jasper | 4.14" |
| Lafayette | 3.60" |
| Livingston | 3.76" |
| Melvin | 3.76" |
| Milstead | 3.72" |
| Moulton | 3.77" |
| Oneonta | 4.17" |
| Perryville | 4.02" |
| Plantersville | 4.02" |
| Rock Mills | 3.95" |
| Rockford | 4.02" |
| Sylacauga | 4.22" |
| Union Springs..... | 4.33" |
| Uniontown | 3.61" |
| Vernon | 4.43" |
| Warrior L&D | 3.33" |
| Wetumpka | 4.08" |

*Southeast Regional Climate Center
www.serrc.com

New Alabama Climate Records

New Local Climate Records¹

June 2013

Precipitation, Daily

| | Period of Record | New Record | Previous Record | Previous Year | | | | | |
|----------------------|------------------|------------|-----------------|---------------|----------------------|-----|---------|---------|------|
| 2 June 2013 | | | | | | | | | |
| SYLACAUGA 4 NE | 63 | 1.30 in | 1.23 in | 2010 | ONEONTA | 118 | 1.10 in | 0.92 in | 1995 |
| WARRIOR LOCK & DAM | 55 | 0.94 in | 0.91 in | 1974 | 14 June 2013 | | | | |
| 5 June 2013 | | | | | BRUNDIDGE | 82 | 1.50 in | 1.31 in | 2003 |
| ATHENS | 72 | 0.73 in | 0.48 in | 1999 | 17 June 2013 | | | | |
| TALLAPOOSA WTR PLT | 35 | 3.85 in | 0.95 in | 1998 | ENTERPRISE 4 W | 47 | 0.98 in | 0.87 in | 1991 |
| TROY MUNICIPAL AP | 44 | 1.15 in | 0.61 in | 2012 | HIGHTOWER | 71 | 1.22 in | 1.00 in | 1949 |
| TUSCALOOSA ACFD | 65 | 2.05 in | 1.30 in | 1997 | LOGAN MARTIN DAM | 31 | 2.01 in | 0.23 in | 1982 |
| TUSCALOOSA MUNI AP | 64 | 1.72 in | 1.12 in | 2000 | SAND MT SUBSTATION | 64 | 1.20 in | 1.20 in | 1997 |
| 6 June 2013 | | | | | SCOTTSBORO | 121 | 1.64 in | 1.12 in | 1951 |
| ALBERTA | 72 | 3.19 in | 2.72 in | 1997 | 18 June 2013 | | | | |
| BANKHEAD LOCK & DAM | 56 | 2.07 in | 1.30 in | 1998 | BERRY 3 NW | 73 | 1.73 in | 0.35 in | 2010 |
| BERRY 3 NW | 73 | 0.48 in | 0.06 in | 2010 | CHILDERSBURG WTR PLT | 56 | 1.98 in | 1.27 in | 2003 |
| CAHABA PUMP HOUSE | 31 | 2.37 in | 1.20 in | 1998 | EVERGREEN | 122 | 2.18 in | 1.80 in | 1927 |
| DEMOPOLIS LOCK & DAM | 61 | 2.68 in | 2.30 in | 1974 | GUNTERSVILLE | 108 | 2.04 in | 1.77 in | 1945 |
| EVERGREEN | 122 | 1.39 in | 0.82 in | 1998 | JACKSONVILLE | 64 | 1.33 in | 1.09 in | 1997 |
| GENEVA NO 2 | 37 | 0.95 in | 0.92 in | 1994 | MOULTON 2 | 56 | 1.72 in | 1.27 in | 2011 |
| HOLT LOCK & DAM | 32 | 3.28 in | 1.26 in | 1998 | ROCK MILLS | 75 | 2.05 in | 0.94 in | 1963 |
| JACKSON | 51 | 1.38 in | 0.90 in | 1974 | RUSSELLVILLE NO 2 | 59 | 2.04 in | 2.00 in | 1989 |
| JACKSONVILLE | 64 | 0.87 in | 0.65 in | 1998 | SAND MT SUBSTATION | 64 | 1.70 in | 1.07 in | 1997 |
| LOGAN MARTIN DAM | 31 | 0.47 in | 0.04 in | 2010 | SYLACAUGA 4 NE | 63 | 2.57 in | 2.15 in | 2003 |
| ONEONTA | 118 | 3.31 in | 2.65 in | 1964 | THOMASVILLE | 121 | 1.30 in | 1.00 in | 1937 |
| T'LOOSA OLIVER DAM | 113 | 2.33 in | 1.12 in | 1964 | WEISS DAM | 31 | 1.28 in | 0.35 in | 2011 |
| WADLEY | 80 | 1.23 in | 0.73 in | 1959 | 19 June 2013 | | | | |
| 7 June 2013 | | | | | ALBERTA | 72 | 0.66 in | 0.60 in | 1985 |
| JONES BLUFF L&D | 32 | 1.12 in | 0.79 in | 2003 | BERRY 3 NW | 73 | 0.75 in | 0.15 in | 1949 |
| WARRIOR LOCK & DAM | 55 | 1.56 in | 1.35 in | 1965 | ROBERTSDALE | 101 | 2.30 in | 1.44 in | 1938 |
| 8 June 2013 | | | | | 24 June 2013 | | | | |
| BERRY 3 NW | 73 | 0.35 in | 0.20 in | 1941 | ROBERTSDALE | 101 | 7.25 in | 2.39 in | 1915 |
| HOLT LOCK & DAM | 32 | 0.70 in | 0.57 in | 1996 | 25 June 2013 | | | | |
| LOGAN MARTIN DAM | 31 | 0.57 in | 0.20 in | 1990 | LAY DAM | 76 | 1.24 in | 1.20 in | 1938 |
| WEISS DAM | 31 | 0.78 in | 0.73 in | 1985 | 28 June 2013 | | | | |
| 9 June 2013 | | | | | TROY MUNICIPAL AP | 44 | 1.50 in | 0.39 in | 2002 |
| BESSEMER 3 WSW | 36 | 1.40 in | 0.69 in | 2001 | 29 June 2013 | | | | |
| DAUPHIN ISLAND #2 | 37 | 5.35 in | 1.51 in | 2012 | ENTERPRISE 4 W | 47 | 1.95 in | 1.65 in | 2011 |
| 10 June 2013 | | | | | GAINESVILLE LOCK | 65 | 1.57 in | 1.54 in | 1975 |
| ADDISON | 75 | 1.09 in | 0.91 in | 1950 | GENEVA NO 2 | 37 | 2.29 in | 1.62 in | 2004 |
| CAHABA PUMP HOUSE | 31 | 1.08 in | 0.50 in | 1986 | MILLERS FERRY L&D | 32 | 1.00 in | 0.99 in | 1993 |
| GADSDEN | 60 | 1.65 in | 1.20 in | 2012 | | | | | |
| HOLT LOCK & DAM | 32 | 1.07 in | 0.49 in | 1999 | | | | | |
| LOGAN MARTIN DAM | 31 | 0.43 in | 0.39 in | 1992 | | | | | |
| OPELIKA | 56 | 0.70 in | 0.55 in | 1957 | | | | | |
| ROBERTSDALE | 101 | 4.74 in | 2.40 in | 1986 | | | | | |
| SAND MT SUBSTATION | 64 | 1.20 in | 1.01 in | 1985 | | | | | |
| WALNUT GROVE | 72 | 1.70 in | 1.68 in | 1952 | | | | | |
| WEISS DAM | 31 | 0.45 in | 0.18 in | 1992 | | | | | |
| WETUMPKA | 120 | 2.13 in | 2.10 in | 1910 | | | | | |
| 11 June 2013 | | | | | | | | | |
| COFFEEVILLE L&D | 30 | 1.70 in | 1.01 in | 2012 | | | | | |
| JACKSONVILLE | 64 | 0.64 in | 0.62 in | 1965 | | | | | |

Precipitation, Wettest June Day on Record

| | Period of Record | New Record | Previous Record | Previous Record Date |
|--------------------|------------------|------------|-----------------|----------------------|
| 6 June 2013 | | | | |
| HOLT LOCK & DAM | 32 | 3.28 in | 3.27 in | 1987-06-04 |
| 9 June 2013 | | | | |
| DAUPHIN ISLAND #2 | 37 | 5.35 in | 3.68 in | 2012-06-10 |

Alabama State Climatologist

John R. Christy

Alabama State Climatologist

The University of Alabama

in Huntsville

christy@nsstc.uah.edu

256-961-7763

Contact:

Phillip Gentry

UAHuntsville Communications

The University of Alabama in Huntsville

gentry@nsstc.uah.edu

256.961.7618

Bob Clymer

Assistant State Climatologist

The University of Alabama in Huntsville

bob.clymer@nsstc.uah.edu

256-961-7771

<http://nsstc.uah.edu/alclimatereport>