

Alabama Climate Report

I'm sure many of you remember April 3 of 37 years ago when the nation experienced it's worst tornado outbreak in history. I was in Africa at the time, and this event was front-page news in Nairobi, Kenya.

Right now we are in the center of the most favorable timing for the fiercest tornadoes - the ones that take the most lives in our state: On the NWS list of the 25 deadliest tornadoes in Alabama since 1880, 10 were in March and 10 were in April.

While the April 3, 1974, storms were the worst in U.S. history, they were not the deadliest in Alabama. The state's worst loss of life due to tornadoes was from an outbreak of severe weather on March 21, 1932.

Sixteen tornadoes were reported in Alabama that day: 14 caused fatalities. Seven

of the deadliest tornadoes in Alabama history hit on that day. The total human toll for the day included 268 people killed in Alabama and approximately 1,800 people injured.

That day's deadliest storm - and the worst in state history - killed 49 people (including seven in one family) and injured 150 in a 60 mile track from Perry County to Coosa County.

The state was still recovering from that outbreak less than a week later, on March 27, when another half dozen tornadoes hit. Six people were killed and 55 were injured.

The April 3, 1974, outbreak actually began April 1, when three F2 tornadoes from Tuscaloosa to Huntsville killed one person and injured 23 more. Another tornado hit a forest area near Lanett on April 2.

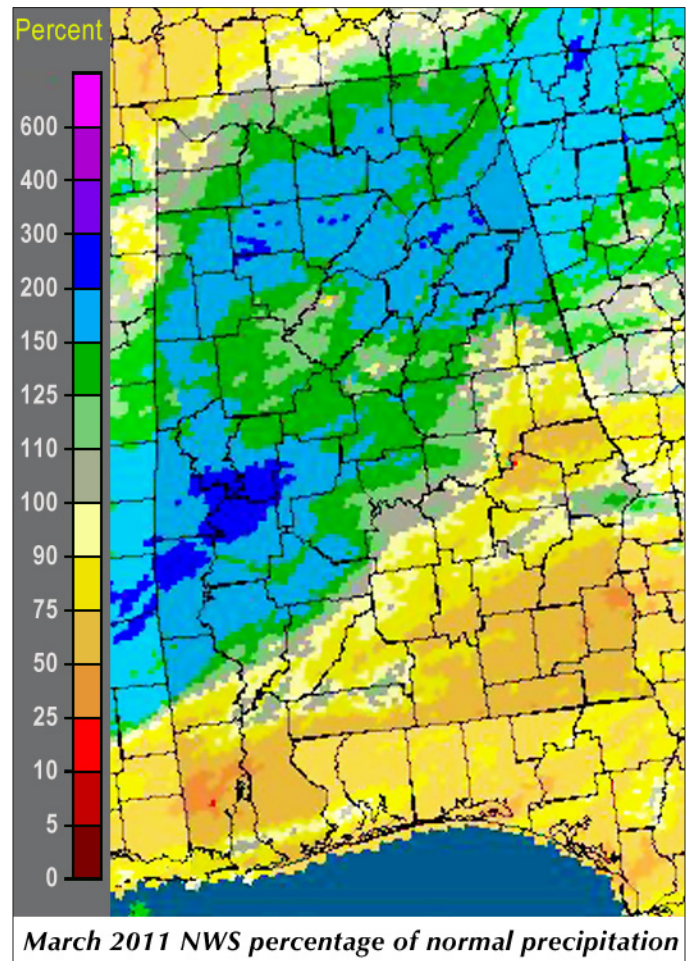
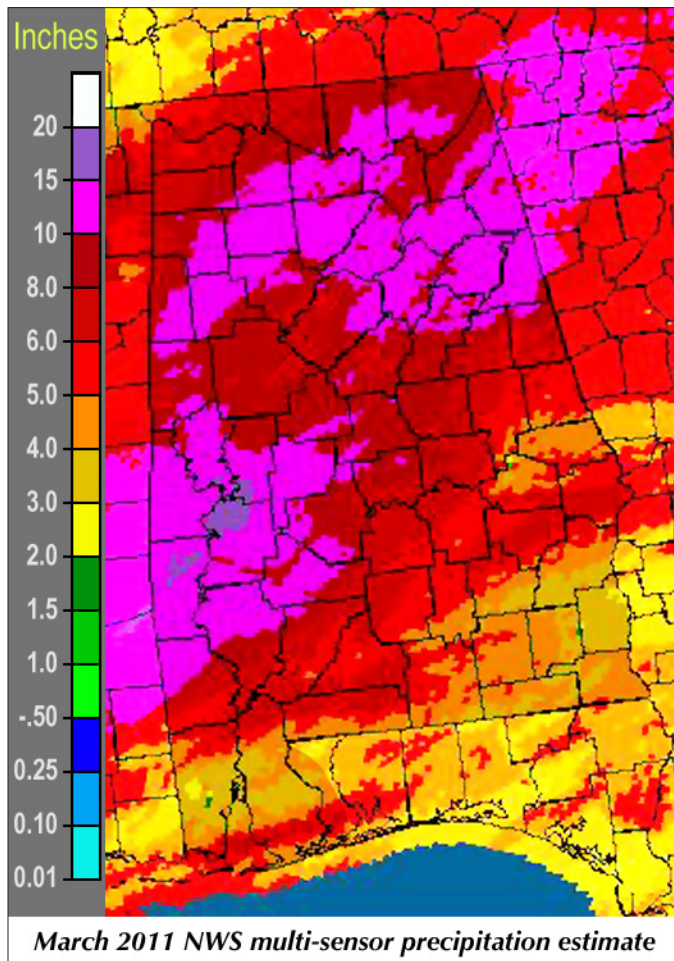
Ten tornadoes were reported on April 3, including an F5 that stayed on the ground for 135 miles. A NWS report about that tornado said: "An estimated 23 people were killed and 250 were injured in Guin as this damage was possibly the most intense to ever hit Alabama ... Most of Guin was devastated."

That same day, two tornadoes touched down in tracks that were less than half a mile apart in Lawrence, Limestone and Madison counties, killing 50 and injuring 510.

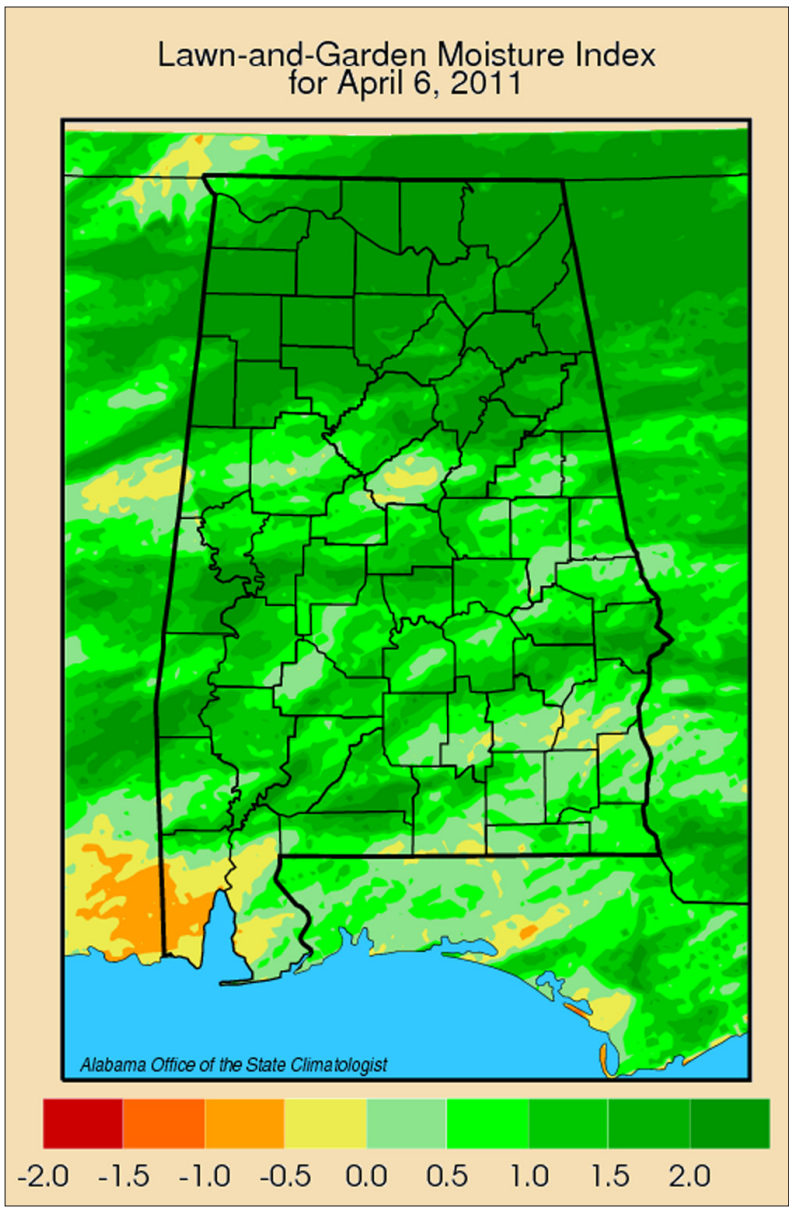
During the April 3 storm, tornadoes killed 82 people in Alabama and injured at least 1,050.

Fortunately, fatality numbers have been dropping through the years thanks in large part to the development of better radars, better weather forecasting tools,

Continued on page 2



The lawn-and-garden moisture index measures the capacity of current soil moisture to sustain healthy lawns and gardens. The index is computed by estimating how much precipitation in the past three weeks contributes to current soil moisture. That rainfall is compared to a "standard" amount of rainfall considered to be adequate for that time of year to sustain healthy lawns and gardens. The difference is the lawn-and-garden moisture index.

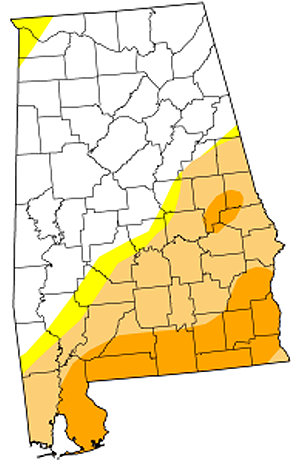


Drought Conditions (Percent Area)

	None	D0-D4	D1-D4	D2-D4	D3-D4	D4
Current	52.72	47.28	41.79	16.07	0.00	0.00
Last Week (03/29/2011 map)	42.07	57.93	41.10	23.51	1.51	0.00
3 Months Ago (01/04/2011 map)	27.87	72.13	53.79	28.76	1.82	0.00
Start of Calendar Year (12/28/2010 map)	17.47	82.53	55.26	29.34	1.82	0.00
Start of Water Year (09/28/2010 map)	3.64	96.36	66.34	25.17	4.40	0.00
One Year Ago (03/30/2010 map)	100.00	0.00	0.00	0.00	0.00	0.00

Intensity:

<p>■ D0 Abnormally Dry</p> <p>■ D1 Drought - Moderate</p> <p>■ D2 Drought - Severe</p>	<p>■ D3 Drought - Extreme</p> <p>■ D4 Drought - Exceptional</p>
---	---



**U.S. Drought Monitor
Alabama**
<http://drought.unl.edu/dm>

Released Thursday, April 7, 2011
 National Drought Mitigation Center,

better communication from our media, better community involvement, better home and commercial construction, and an all-around greater respect for the destruction these storms are able to inflict. This reduction in deaths has happened in spite of our growing population.

Even though progress has helped minimize the destructive impact on life and property, these storms are capable of winds in excess of 200 mph, and that still is difficult to protect against.

With my colleagues at the National Weather Service Offices which cover all of the counties in Alabama (Huntsville, Calera, Mobile and Tallahassee), I urge you to purchase a weather radio and be aware when threatening weather might be coming your way.

It is difficult to know how many tornadoes should be expected in a given year. The overall average is about 23 since 1950. However, since 2000 the average has climbed to 60 (<http://www.srh.noaa.gov/bmx/?n=tornadorecords>.)

The average number has been rising because our detection methods have improved considerably - something for which we are all grateful. Using the latest radar technology, NWS forecasters are able to spot possible tornadoes and mark the area for a site visit within a few days, even if no damage has been reported.

If a tornado hits an unpopulated stretch of forest, is it a tornado? Fifty years ago the answer was likely, "No." Today we are able to say yes more and more.

So, many more eyes and radars are watching out for us, but our safety ultimately depends on our own awareness and action.

John R. Christy, Ph.D.
Alabama State Climatologist
University of Alabama in Huntsville
john.christy@nsstc.uah.edu

Bob Clymer
Assistant State Climatologist
bob.clymer@nsstc.uah.edu

Alabama Monthly Climate Summaries

March 2011

	March Mean March Norm	March Hi Temp Record Hi	March Low Temp Record Lo	Total Precip. Normal Prec.	Wettest March Driest March	Heaviest Day Record Day
Anniston	56.5°	84° 3/19/11	32° 3/12/11	8.71"	18.09" 1977	3.68" 3/9/11
	54.9°	89°+ 3/9/74	12° 3/14/93	6.28"	1.38" 1985	7.96" 3/29/77
Auburn	58.8°	84° 3/19/11	36° 3/11/11	4.80"	17.47" 1929	1.29" 3/9/11
	56.2°	89° 3/27/1910	13° 3/4/43	6.44"	.69" 1918	5.06" 3/23/44
Birmingham	57.3°	84° 3/20, 22/11	34° 3/11/11	9.45"	15.80" 1980	2.95" 3/9/11
	54.5°	89°+ 3/19/82	2° 3/14/93	6.10"	1.71" 1985	6.91" 3/19/70
Brewton	60.9°	85.6° 3/20/11	31.5° 3/11/11	6.86"	15.82" 1990	3.51" 3/9/11
	57.6°	91° 3/31/78	10° 3/3/80	7.01"	2.80" 1985	13.00" 3/15/29
Calera	57.3°	84° 3/20/11	33° 3/11/11	8.29"	18.86" 1980	2.88" 3/9/11
	54.2°	88° 3/10/74	9° 3/3/80	6.50"	.40" 1918	6.45" 3/29/51
Clanton	56.7°	83.1° 3/20/11	33.3° 3/12/11	9.32"	15.88" 1976	3.07" 3/9/11
	54.5°	93° 3/25/29	10° 3/14/93	6.96"	2.27" 1985	6.85" 3/4/79
Courtland	52.7°	82° 3/20/11	30° 3/11/11	7.88"	M	2.15" 3/26/11
	M	M	M	M	M	M
Cullman	52.8°	80.8° 3/20/11	30.9° 3/29/11	11.04"	M	2.91" 3/9/11
	M	M	M	M	M	M
Decatur	53.6°	83° 3/20/11	31° 3/2/11	8.84"	11.45" 1929	1.96" 3/5/11
	52.4°	93° 3/22/1907	4° 3/7/1899	5.52"	.65" 1910	4.95" 3/23/29
Dothan	62.1°	87° 3/19/11	36° 3/11, 12/11	4.38"	16.40" 1929	1.85" 3/9/11
	59.3°	89° 3/24/1904	21° 3/4/43	5.66"	.42" 1955	9.00" 3/14/29
Fairhope	60.9°	79.9° 3/27/11	30.6° 3/11/11	3.96"	11.60" 1980	2.05" 3/9/11
	59.8°	85°+ 3/10/74	21°+ 3/3/80	6.71"	2.59" 1981	6.20" 3/16/90
Gadsden	52.2°	76.8° 3/22/11	32.0° 3/12/11	10.16"	17.41" 1980	2.62" 3/9/11
	52.2°	88° 3/11/74	11°+ 3/6/60	6.55"	1.46" 1986	4.98" 3/4/79
Gainesville	57.8°	84.6° 3/20/11	34° 3/11/11	8.26"	17.26" 1976	2.17" 3/9/11
	54.8°	88°+ 3/13/67	15° 3/3/80	5.97"	1.57" 1985	5.12" 3/29/51
Greensboro	58.1°	85.3° 3/20/11	32.5° 3/11/11	12.35"	14.57" 1976	4.51" 3/9/11
	69.9°	91° 3/23/95	10° 3/14/93	6.51"	2.37" 1985	7.30" 3/28/51
Guntersville	54.3°	80.2° 3/22/11	34.3° 3/12/11	10.53"	17.49" 1980	2.61" 3/9/11
	64.0°	87°+ 3/13/90	11° 3/3/80	6.20"	1.89" 1974	4.30" 3/12/77
Highland Home	59.9°	84.2° 3/20/11	36° 3/11/11	6.61"	13.84" 1973	2.24" 3/30/11
	68.8°	88° 3/12/55	14° 3/3/80	6.95"	2.92" 1984	8.13" 3/30/60
Huntsville	53.9°	81° 3/20/11	32° 3/11/11	9.76"	17.00" 1980	2.24" 3/5/11
	52.1°	88° 3/31/63	6° 3/3/80	6.11"	1.12" 2007	5.24" 3/16/73

Alabama Monthly Climate Summaries

February 2011

	March Mean March Norm	March Hi Temp Record Hi	March Low Temp Record Lo	Total Precip. Normal Prec.	Wettest March Driest March	Heaviest Day Record Day
Mobile	63.0°	86° 3/19/11	32° 3/11/11	4.74"	13.46" 1980	2.21" 3/5/11
	71.2°	89° 3/15/67	21° 3/14/93	7.20"	3.00" 1981	7.15" 3/16/90
Montgomery	61.0°	88° 3/20/11	35° 3/12/11	7.41"	12.4" 1990	2.03" 3/9/11
	70.5°	89°+ 3/22/95	17° 3/14/93	6.39"	1.75" 1997	7.89" 3/16/90
Muscle Shoals	52.8°	82.6° 3/20/11	30° 3/2/11	6.72"	14.25" 1980	2.02" 3/26/11
	63.8°	86°+ 3/13/67	10° 3/3/43	6.21"	2.22" 1985	4.80" 3/27/94
Russellville	52.9°	82.9° 3/20/11	26.8° 3/11/11	9.09"	15.75" 1973	2.95" 3/26/11
	63.5°	84°+ 3/24/95	5°+ 3/4/80	6.28"	2.14" 2000	8.40" 3/16/73
Scottsboro	52.3°	81° 3/18/11	29.8° 3/12/11	11.28"	16.48" 1980	2.47" 3/9/11
	63.8°	90° 3/25/29	8° 3/14/93	6.52"	2.28" 1982	4.88" 3/16/73
Selma	58.5°	84.7° 3/20/11	32.2° 3/12/11	8.30"	14.06" 1973	2.41" 3/5/11
	69.3°	90° 3/25/36	18° 3/4/80	6.67"	1.07" 1985	9.75" 3/16/90
Talladega	55.5°	81.1° 3/19/11	31.5° 3/12/11	10.49"	18.24" 1976	3.87" 3/9/11
	67.4°	88°+ 3/24/95	6° 3/14/93	6.82"	1.18" 1985	7.81" 3/30/77
Thomasville	59.1°	84° 3/20, 26/11	29.5° 3/11/11	9.54"	15.35" 1976	2.36" 3/9/11
	57.6°	89°+ 3/20/80	14° 3/3/80	6.95"	1.62" 1978	11.10" 3/12/35
Troy	59.7°	85.5° 3/20/11	32° 3/12/11	4.97"	13.75" 1990	2.52" 3/9/11
	69.1°	89° 3/12/55	13° 3/3/80	6.56"	1.81" 1982	8.56" 3/17/90
Tuscaloosa	57.5°	86° 3/20/11	32° 3/11/11	7.25"	19.99" 1976	2.67" 3/9/11
	69.6°	90° 3/23/95	12° 3/14/93	6.37"	1.12" 1986	6.08" 3/13/75
Valley Head	51.2°	78.6° 3/22/11	28.8° 3/25/11	10.56"	15.87" 1980	2.35" 3/9/11
	61.5°	84°+ 3/20/82	2° 3/3/80	6.57"	1.91" 1985	4.87" 3/4/79
Statewide	49.38° 47.58°	84° Gainesville 87° (Four sites)	8.8° Russellville -12° (Three sites)	3.30" 6.08"		3.19" Highland H. 8.61" Fairhope

M: Data is missing or not available

**New Record*

Community Collaborative Rain, Hail & Snow Network (CoCoRAHS)

March 2011

Normal

March

Precipitation*

	Ave. Total Precip.	# Stations
Autauga	8.69	4
Baldwin	4.51	27
Barbour	4.83	2
Bibb	5.05	2
Blount	9.62	8
Bullock	NA	0
Butler	NA	0
Calhoun	8.55	4
Chambers	4.02	1
Cherokee	13.38	1
Chilton	10.23	2
Choctaw	5.54	1
Clarke	9.77	2
Clay	NA	0
Cleburne	NA	0
Coffee	3.98	2
Colbert	7.75	7
Conecuh	NA	0
Coosa	5.41	2
Covington	NA	0
Crenshaw	NA	0
Cullman	7.80	7
Dale	4.77	1
Dallas	NA	0
DeKalb	11.88	3
Elmore	6.88	10
Escambia	2.61	2
Etowah	10.43	1
Fayette	9.55	3
Franklin	9.88	1
Geneva	NA	0
Greene	NA	0
Hale	NA	0
Henry	1.89	1

	Ave. Total Precip.	# Stations
Houston	4.95	3
Jackson	10.88	7
Jefferson	8.89	12
Lamar	8.78	1
Lauderdale	6.83	19
Lawrence	9.40	2
Lee	5.82	3
Limestone	8.35	16
Lowndes	NA	0
Macon	5.77	1
Madison	9.56	62
Marengo	NA	0
Marion	8.40	1
Marshall	10.66	12
Mobile	4.72	20
Monroe	NA	0
Montgomery	6.56	4
Morgan	9.66	10
Perry	NA	0
Pickens	8.39	1
Pike	NA	0
Randolph	8.77	3
Russell	5.42	3
St. Clair	11.11	4
Shelby	10.01	18
Sumter	NA	0
Talladega	9.84	6
Tallapoosa	6.62	8
Tuscaloosa	8.36	4
Walker	2.65	1
Washington	6.31	1
Wilcox	9.77	2
Winston	10.04	2

Abbeville	6.02"
Alex City	6.41"
Aliceville	5.88"
Andalusia	6.40"
Ashland	6.68"
Athens	5.41"
Bay Minette	6.31"
Bessemer	6.01"
Billingsley	5.84"
Centreville	6.49"
Chatom	6.17"
Claiborne L&D	5.85"
Clayton	6.11"
Dauphin Isl.	5.65"
Elba	6.61"
Eufaula WR.....	5.84"
Evergreen	6.29"
Fayette	6.74"
Geneva 2	6.30"
Greenville	6.20"
Haleyville	6.16"
Hamilton 3S	5.83"
Heflin	6.47"
Hurtsboro	6.02"
Jasper	6.32"
Lafayette	6.44"
Livingston	5.95"
Melvin	7.11"
Milstead	6.03"
Moulton	6.10"
Oneonta	6.22"
Perryville	6.21"
Pine Apple	6.49"
Plantersville	6.34"
Rock Mills	6.19"
Rockford	6.60"
Sylacauga	5.91"
Union Springs ..	6.09"
Uniontown	5.99"
Vernon	6.49"
Warrior L&D ...	5.81"
Wetumpka	5.98"

*Southeast Regional Climate Center
www.serrc.com

New Daily Local Climate Records¹

March 2011

Maximum High Temperature

	New Record	Previous Record	Previous Year	Period of Record					
1 March 2011									
BANKHEAD L&D	78.0°F	77.0°F	1981	51	RUSSELLVILLE #2	86.0°F	84.0°F	2004	55
BRIDGEPORT	75.0°F	73.0°F	2007	44	THORSBY EXP STN	84.0°F	83.0°F	2004	51
CENTREVILLE 6 SW	81.0°F	79.0°F	1981	36	22 March 2011				
CLAYTON	79.0°F	78.0°F	1976	48	BANKHEAD L&D	82.0°F	81.0°F	1966	51
DAUPHIN IS #2	73.0°F	71.0°F	2009	33	BIRMINGHAM AP	84.0°F	83.0°F	1995	81
GAINESVILLE LOCK	84.0°F	81.0°F	1981	50	FAYETTE	84.0°F	83.0°F	1952	65
GUNTERSVILLE	76.0°F	74.0°F	2007	53	LIVINGSTON	87.0°F	86.0°F	1907	89
HAMILTON 3 S	79.0°F	78.0°F	2007	48	MUSCLE SHOALS AP	82.0°F	81.0°F	1991	70
ONEONTA	79.0°F	78.0°F	1981	92	SAND MT SUBSTN	77.0°F	76.0°F	2007	58
OPELIKA	79.0°F	78.0°F	1976	47	23 March 2011				
SAND MT SUBSTN	76.0°F	75.0°F	1955	61	ENTERPRISE 2 W	84.0°F	83.0°F	1997	40
SYLACAUGA 4 NE	79.0°F	78.0°F	1976	50	GENEVA #2	86.0°F	83.0°F	1997	34
3 March 2011									
GENEVA #2	86.0°F	82.0°F	2004	34	HEADLAND	87.0°F	85.0°F	1991	57
18 March 2011									
MUSCLE SHOALS AP	82.0°F	81.0°F	1982	70	RUSSELLVILLE #2	82.0°F	80.0°F	1991	56
19 March 2011									
BRIDGEPORT 5 NW	82.0°F	80.0°F	1963	44	24 March 2011				
MOBILE RGNL AP	86.0°F	84.0°F	2003	63	MOBILE DOWNTOWN AP ...	84.0°F	81.0°F	2007	48
MONTGOMERY AP	86.0°F	85.0°F	2003	63	26 March 2011				
20 March 2011									
ALEXANDER CITY	85.0°F	84.0°F	1979	41	MOBILE DOWNTOWN AP ...	83.0°F	80.0°F	2007	48
CLAYTON	85.0°F	84.0°F	2002	47	MOBILE RGNL AP	84.0°F	82.0°F	1988	63
ENTERPRISE 2 W	87.0°F	86.0°F	1982	39	27 March 2011				
MONTGOMERY AP	88.0°F	87.0°F	2004	63	FAIRHOPE 2 NE	84.0°F	83.0°F	2007	90
TUSCALOOSA ACFD	87.0°F	86.0°F	2004	61	MOBILE DOWNTOWN AP ...	85.0°F	81.0°F	1945	48
21 March 2011									
ATMORE	86.0°F	85.0°F	2004	49	MOBILE RGNL AP	85.0°F	82.0°F	1994	63
CENTREVILLE 6 SW	87.0°F	86.0°F	2004	36	28 March 2011				
GAINESVILLE LOCK	86.0°F	85.0°F	2004	50	EUFAULA WILDLIFE REF ...	86.0°F	85.0°F	2007	43
					FAIRHOPE 2 NE	84.0°F	83.0°F	2007	92
					GENEVA #2	85.0°F	84.0°F	2007	34
					29 March 2011				
					GENEVA #2	85.0°F	84.0°F	1989	34

Highest One-Day Precip., Month

	New Record	Previous Record	Previous Year	Period of Record
9 March 2011				
DEMOPOLIS L&D	4.75 in	4.11 in	3/31/76	59

¹<http://lwf.ncdc.noaa.gov/extremes/records.php>

* This record differs from long-term data in the AOSC climate database:
http://nsstc.uah.edu/alclimate/climate/daily_climate_and_normals.php

Precipitation

	New Record	Previous Record	Previous Year	Period of Record				
1 March 2011								
ADDISON	0.34 in	0.28 in	1994	73				
PINE APPLE	1.72 in	1.3 in	1995	43				
5 March 2011								
ATHENS	2.1 in	2.06 in	2004	69				
DAUPHIN IS #2	0.63 in	0.16 in	1981	35				
TROY MUNICIPAL AP	1.12 in	0.98 in	1981	41				
6 March 2011								
ASHLAND 3 ENE	2.63 in	2.19 in	2003	71				
CALERA	2.29 in	2.2 in	1995	110				
CENTREVILLE 6 SW	2.46 in	1.95 in	1983	36				
JACKSON	1.53 in	1.3 in	1984	49				
LAY DAM	1.88 in	1.74 in	1963	74				
MELVIN	3.95 in	3.0 in	1948	71				
MONTEVALLO	2.55 in	1.5 in	2003	117				
PLANTERSVILLE 2 SSE	3.02 in	2.04 in	1943	71				
WEST BLOCTON	2.55 in	2.3 in	2003	71				
8 March 2011								
FAYETTE	2.01 in	1.42 in	1947	119				
TUSCALOOSA MUNI AP	1.25 in	1.18 in	1976	62				
9 March 2011								
ADDISON	3.37 in	0.9 in	1990	73				
ALBERTA	2.49 in	1.34 in	1999	70				
ALICEVILLE L&D	3.95 in	0.74 in	1988	30				
ANNISTON METRO AP	3.68 in	1.87 in	1949	108				
ASHLAND 3 ENE	1.33 in	1.28 in	1949	71				
ATHENS	2.3 in	1.25 in	1962	69				
BANKHEAD L&D	2.54 in	1.3 in	1990	54				
BELLE MINA 2 N	2.46 in	1.52 in	1990	61				
BESSEMER 3 WSW	2.28 in	1.73 in	1994	34				
BILLINGSLEY 3 NE	2.44 in	1.5 in	1998	72				
BIRMINGHAM AP	2.95 in	1.6 in	1994	81				
CALERA	3.1 in	2.2 in	1998	110				
CARBON HILL	3.97 in	1.25 in	1960	73				
CENTREVILLE 6 SW	3.6 in	1.6 in	1994	36				
CHILDERSBURG WTP	2.22 in	0.94 in	1976	54				
CLANTON	1.15 in	1.11 in	1921	118				
DEMOPOLIS L&D	4.75 in	0.94 in	1976	59				
DOTHAN AP	1.85 in	1.21 in	1948	109				
FAYETTE	2.4 in	1.22 in	1976	119				
FT PAYNE	2.9 in	1.73 in	1990	75				
GAINESVILLE LOCK	3.05 in	1.64 in	1976	62				
GADSDEN	3.0 in	1.13 in	1990	58				
GUNTERSVILLE	2.1 in	1.7 in	1919	106				
HAMILTON 3 S	2.81 in	1.08 in	1976	49				
HIGHTOWER	2.13 in	0.9 in	1942	69				
HOLT L&D	2.62 in	0.64 in	1988	30				
HUNTSVILLE INTL AP	1.98 in	1.55 in	1978	52				
JACKSONVILLE	2.81 in	1.61 in	1949	62				
JASPER	3.52 in	0.93 in	1976	50				
LAY DAM	1.33 in	0.92 in	1976	74				
LEEDS	3.1 in	2.27 in	1922	94				
MELVIN	4.4 in	1.05 in	1976	71				
MITCHELL DAM	1.17 in	0.73 in	1946	74				
MOBILE DOWNTOWN AP	1.58 in	1.19 in	1999	68				
MONTEVALLO	2.6 in	0.89 in	1958	117				
MONTGOMERY AP	2.03 in	1.56 in	1994	63				
MOULTON 2	2.74 in	1.39 in	1994	53				
ONEONTA	2.5 in	1.8 in	1909	116				
PALMERDALE	3.4 in	1.58 in	1976	62				
PINSON	3.0 in	1.73 in	1994	30				
PLANTERSVILLE 2 SSE	2.45 in	1.05 in	1999	71				
ROCK MILLS	1.61 in	0.96 in	1946	72				
SAND MT SUBSTN	2.25 in	1.93 in	1998	62				
SCOTTSBORO	3.56 in	2.9 in	1928	119				
SYLACAUGA 4 NE	2.12 in	1.37 in	1987	61				
TALLADEGA	2.79 in	2.5 in	1909	123				
THOMASVILLE	3.0 in	2.11 in	1958	119				
THORSBY EXP STN	2.72 in	1.18 in	1987	53				
TROY MUNICIPAL AP	2.7 in	0.68 in	2010	41				
TUSCALOOSA ACFD	3.63 in	0.99 in	1949	62				
TUSCALOOSA MUNI AP	2.64 in	0.99 in	1949	62				
TUSCALOOSA OLIVER DAM	2.43 in	2.37 in	1919	111				
UNIONTOWN	4.16 in	2.23 in	1909	117				
VERNON	3.7 in	1.3 in	1976	73				
WALNUT GROVE	3.3 in	1.9 in	1976	69				
WARRIOR L&D	3.53 in	1.26 in	1958	53				
WEST BLOCTON	3.12 in	1.1 in	1958	71				
10 March 2011								
ALEXANDER CITY	1.76 in	1.52 in	2010	41				
ASHLAND 3 ENE	1.69 in	1.43 in	2010	71				
ATMORE	3.37 in	0.89 in	1994	71				
BREWTON 3 ENE	3.75 in	2.35 in	2006	33				
BREWTON 3 SSE	2.1 in	1.95 in	1999	85				
BRUNDIDGE	2.0 in	1.04 in	1978	80				
CLAYTON	2.2 in	0.94 in	2010	82				
DAUPHIN IS #2	2.33 in	1.01 in	1994	35				
ENTERPRISE 2 W	2.32 in	1.12 in	1994	44				
FAIRHOPE 2 NE	2.13 in	1.76 in	1994	93				
GENEVA #2	2.0 in	0.98 in	1994	34				
HEADLAND	1.62 in	0.96 in	1978	60				
HURTSBORO	2.07 in	0.97 in	1988	32				
JONES BLUFF L&D	1.91 in	1.57 in	1994	30				
MILLERS FERRY L&D	2.28 in	1.6 in	2010	30				
MITCHELL DAM	1.62 in	1.3 in	2010	74				
WALLACE 2 E	3.08 in	1.7 in	1994	69				
14 March 2011								
ATHENS	0.95 in	0.88 in	2009	69				
15 March 2011								
BERRY 3 NW	1.1 in	0.36 in	2009	71				
26 March 2011								
HUNTSVILLE INTL AP	2.09 in	1.46 in	1959	52				
MUSCLE SHOALS AP	2.36 in	2.17 in	1959	70				
27 March 2011								
FT PAYNE	2.7 in	1.34 in	1959	75				
ADDISON	1.38 in	1.31 in	1950	73				
JASPER	1.8 in	1.57 in	1976	50				
SAND MT SUBSTN	1.3 in	1.18 in	1950	62				
SCOTTSBORO	2.44 in	2.04 in	1936	119				
28 March 2011								
LEEDS	1.98 in	1.58 in	1935	94				
30 March 2011								
BRIDGEPORT 5 NW	2.05 in	1.58 in	1903	114				
JACKSON	2.1 in	1.7 in	1991	49				
MOBILE DOWNTOWN AP	0.54 in	0.26 in	1960	68				
TROY MUNICIPAL AP	1.61 in	1.06 in	1991	41				